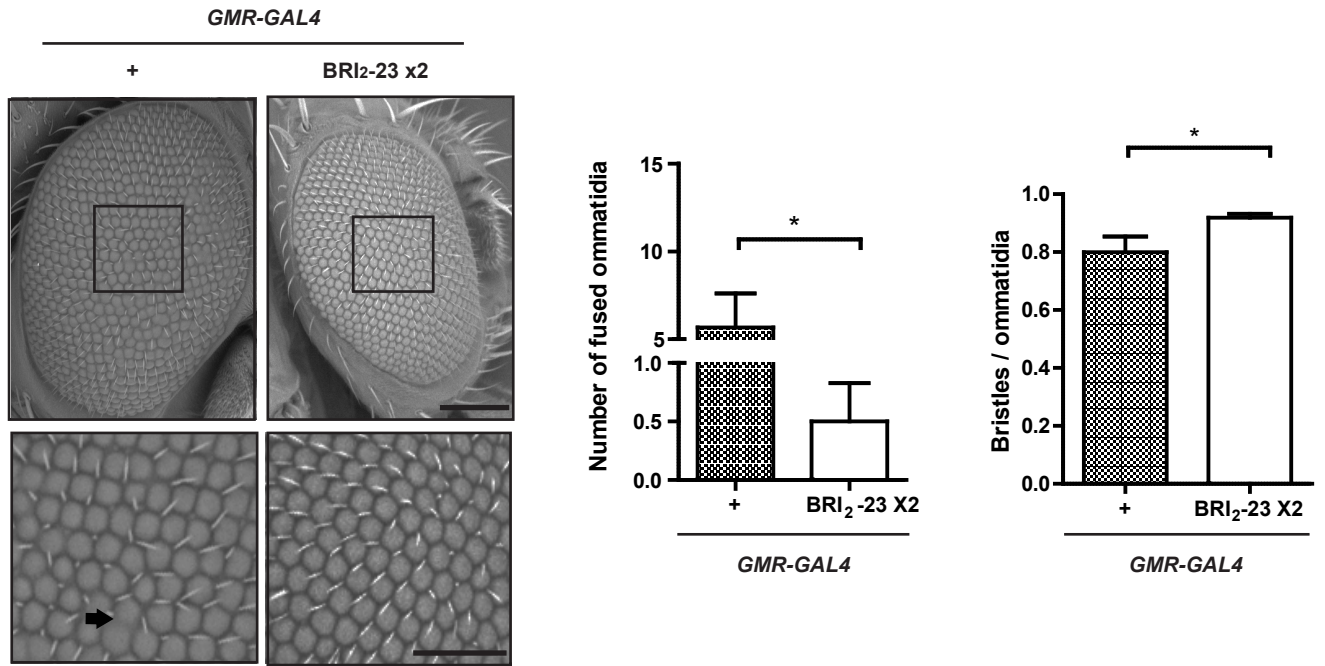
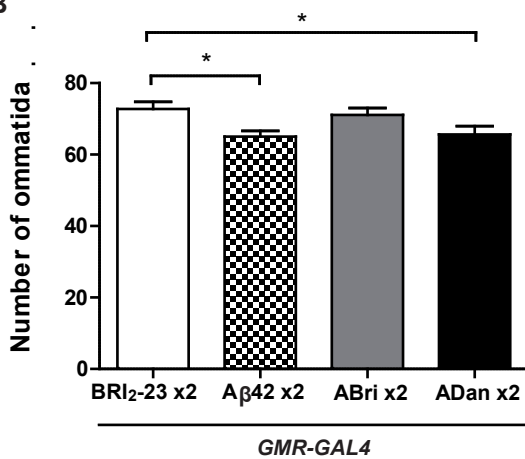


Additional file 3

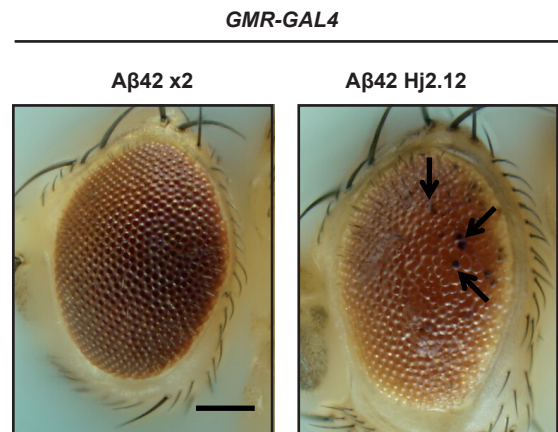
A



B



C



Supp. Figure 2. Toxicity in the *Drosophila* eye. **A**, Left panel, ESEM showing *GMR-GAL4*/+ as compared to *GMR-GAL4*/Bri₂-23 lines and right panel, quantification of fused ommatidia and number of bristles per ommatidia. Bars represent the mean ± SEM. Asterisks indicate a statistically significant difference (*p<0.05, Student's t-test). **B**, Number of ommatidia in a central selected area (135 x135 μm) in the eyes of transgenic and non-transgenic lines. Bars represent the mean ± SEM. Asterisks indicate a statistically significant difference (*p<0.05, One-way ANOVA, followed by Dunnett's comparison). **C**, Aβ42 toxicity in the eye. At 25°C, *GMR-GAL4*/Aβ42 Hj2.12 developed a rough eye with areas of necrosis (arrows) as compared to a normal phenotype in our *GMR-GAL4*/Aβ42 x2 line. In Aβ42 Hj2.12 Aβ42 levels are 2-fold higher as compared to our *GMR-GAL4*/Aβ42 x2 line. Scale bar =100 μm.