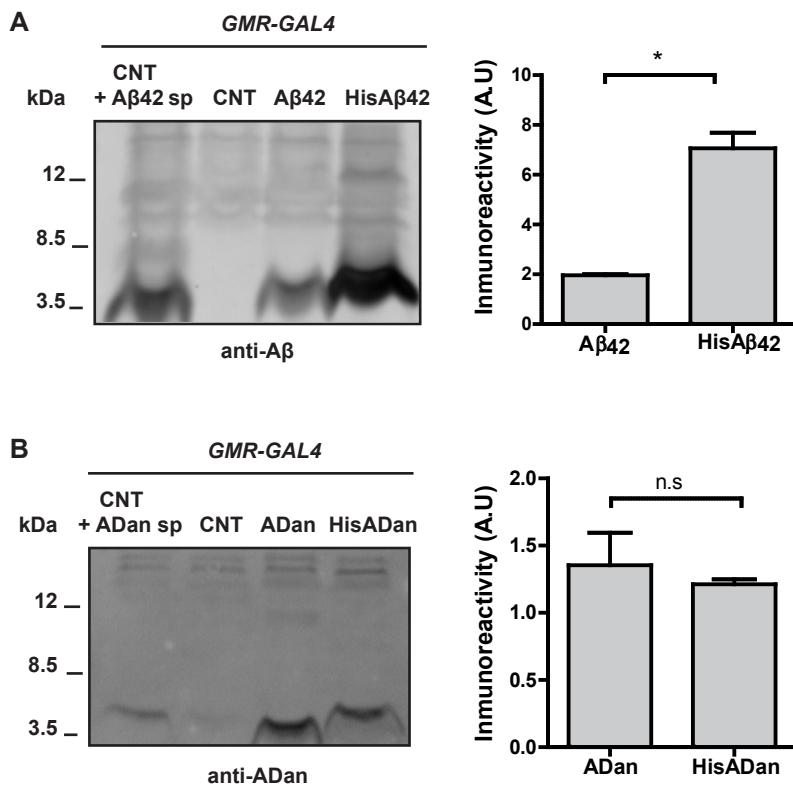


Additional file 4



Supp. Figure 3. Accumulation of untagged and His-tagged amyloid peptides. **A**, Western blot with anti-A β from fly heads expressing two copies of A β 42 or HisA β 42 as compared to non-transgenic flies. **B**, Western blot with anti-ADan from fly heads expressing two copies of ADan or HisADan compared to non-transgenic flies. On the right of each panel, quantification of immunoreactive bands. Bars represent the mean \pm SEM of three experiments. Asterisk indicates a statistically significant difference ($*p < 0.05$, Student's t-test)