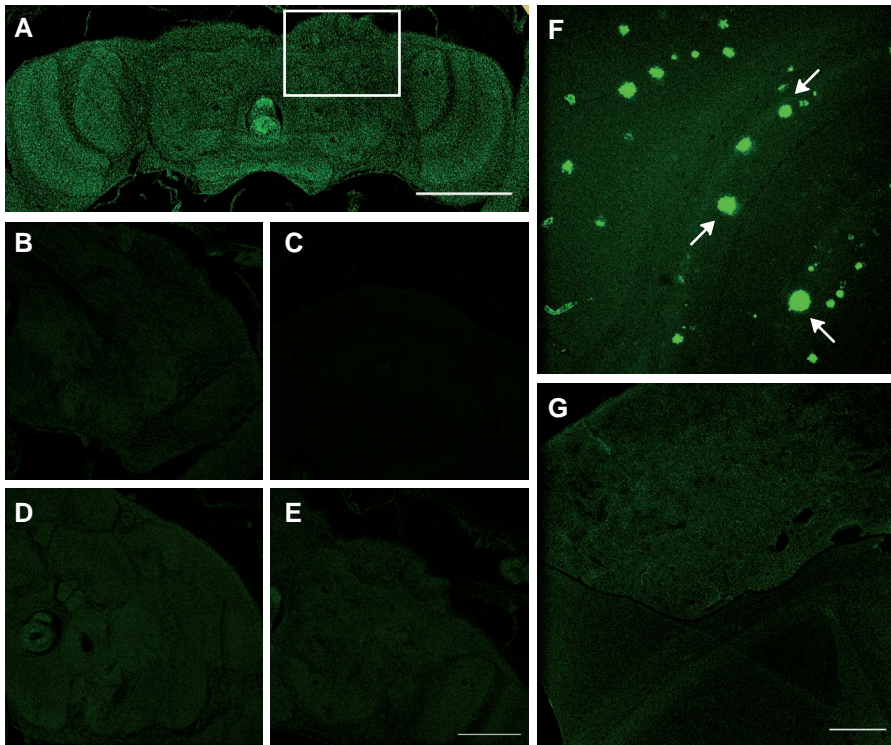


Additional file 7



Supp. Figure 5. Thioflavine S-negative accumulation of A β 42, ABri and ADan in the CNS of *Drosophila*. **A**, Whole brain section showing selected area (scale bar=100 μ m) and **B-E** brain sections of flies expressing two copies of BRI₂-23, A β 42, ABri and ADan respectively, did not show positive ThS staining (scale bar=50 μ m). **F**, Brain section from a 27 months-old Tg2576 mouse, used as a positive control, revealed ThS-positive amyloid plaques (arrows). **G**, brain section from an age-matched non-transgenic mouse littermate as a negative control (scale bar=200 μ m)