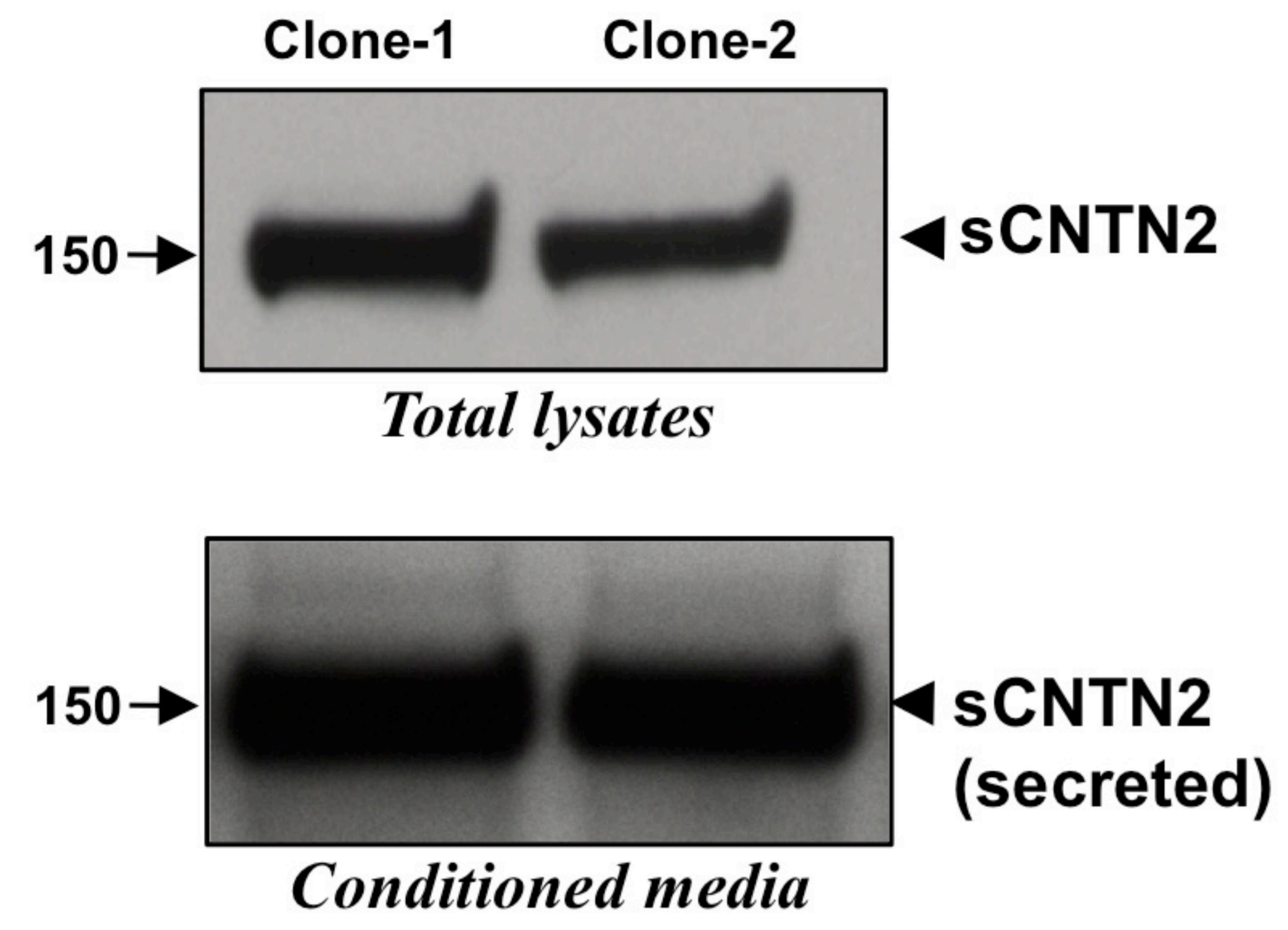
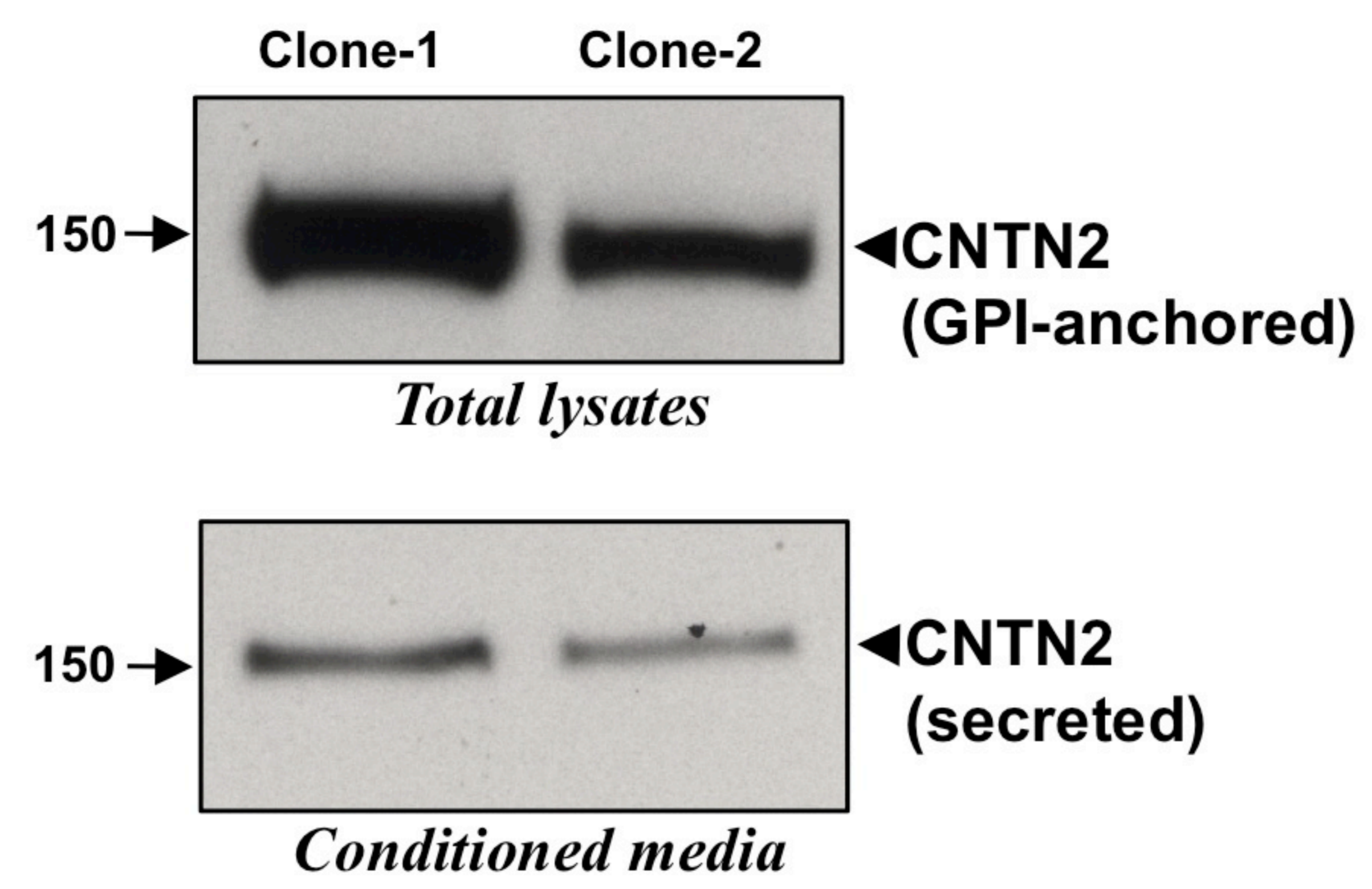


**A****B**

**Supplemental Figure Legends:**

**Supplemental Figure 1. Expression of sCNTN2 and GPI-anchored CNTN2 in CHO cells**

Western blot analysis showed the overexpressed sCNTN2 is mostly secreted into the conditioned media (A) while GPI-anchored CNTN2 is mostly in the total lysate fraction (B).