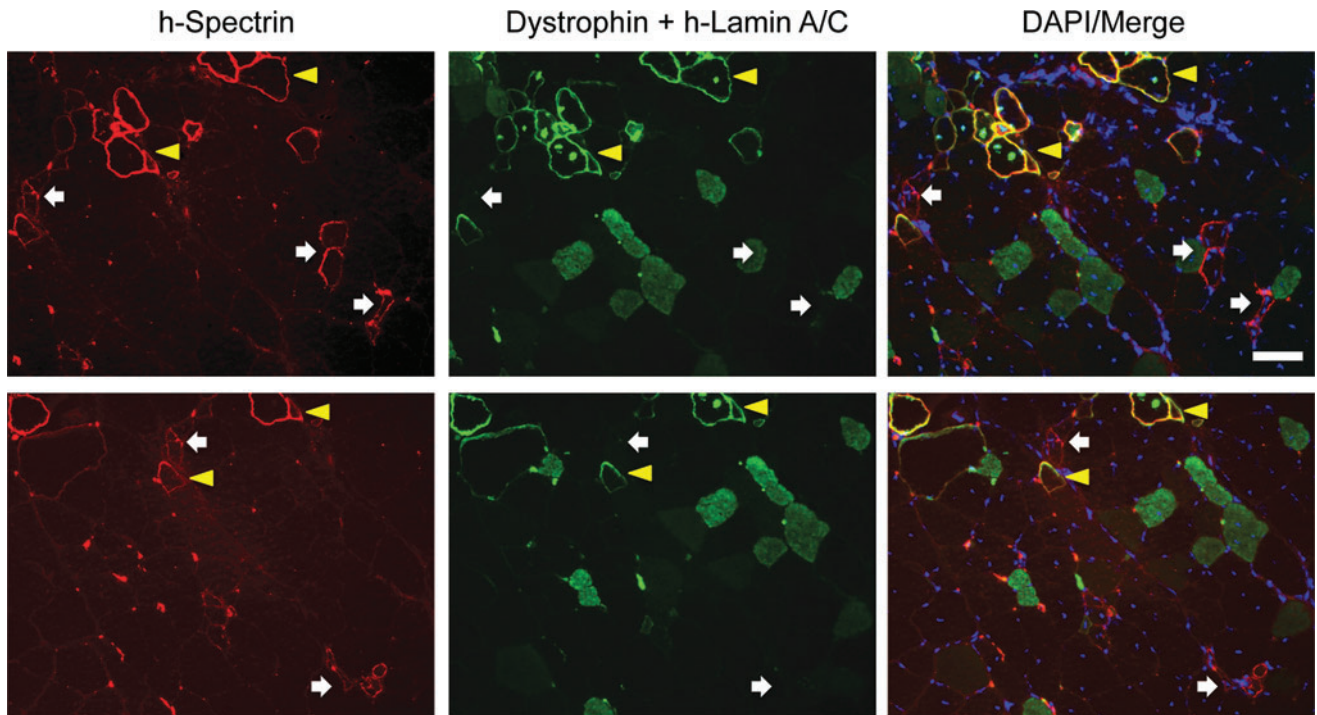


Supplementary Data



SUPPLEMENTARY FIG. S1. Spectrin-reactive myofibers may or may not coexpress dystrophin or lamin A/C. Recipient NOD/*Rag1*^{null}*mdx5^{co}* muscles 2 months after injection of 1×10^5 MCAM⁺ human fetal cells show the presence of myofibers positive for human spectrin, dystrophin, and human lamin A/C (yellow arrowheads). In addition, myofibers reactive to human spectrin but negative for dystrophin and lamin A/C expression were detected (white arrows), raising ambiguity about the engraftment of human cells. h-spectrin, human spectrin; h-lamin A/C, human lamin A/C. Scale bar: 50 μ m