

**Supplemental Data:**

<b>Table 1: Univariable Analyses for Association with Death, Heart Failure Admission, or the development of late recurrent atrial fibrillation</b>				
	HR	CI	LR $\chi^2$	<i>p</i> Value
<b>Age</b>	1.02	0.99-1.03	3.12	0.09
<b>Male</b>	1.01	0.99-1.03	0.12	0.72
<b>Hypertension Duration</b>	1.00	0.99-1.01	1.21	0.27
<b>Atrial Fibrillation Duration</b>	1.00	0.99-1.01	0.01	0.91
<b>Cigarette Smoking</b>	0.99	0.39-2.47	0.01	0.97
<b>Sleep Apnea</b>	1.87	1.02-3.43	4.10	0.04
<b>Hyperthyroidism</b>	0.65	0.16-2.68	0.35	0.55
<b>Excess Alcohol Intake</b>	1.38	0.55-3.46	0.46	0.49
<b>Family History of Hypertension</b>	0.93	0.47-1.86	0.04	0.85
<b>Hyperlipidemia</b>	0.77	0.44-1.34	0.88	0.35
<b><u>Medications:</u></b>				
• <b>Thiazide Diuretic</b>	1.17	0.68-1.97	0.32	0.57
• <b>Loop Diuretic</b>	0.86	0.27-2.75	0.06	0.80
• <b>ACE</b>	1.01	0.60-1.71	0.01	0.97
• <b>ARB</b>	0.93	0.51-1.70	0.06	0.81
• <b>Beta-Blocker</b>	0.99	0.56-1.78	0.01	0.98
• <b>Calcium Channel Blocker</b>	0.85	0.49-1.47	0.36	0.55

• ASA	0.97	0.55-1.72	0.01	0.93
• Class 1/Class 3 Anti-Arrhythmic	1.02	0.99-1.06	2.40	0.15
• Statin Therapy	0.85	0.49-1.46	0.36	0.55
• Inhibition of aldosterone receptor	0.79	0.34-1.84	0.30	0.58
• Alpha Blocker	0.98	0.36-2.72	0.01	0.97
• Digoxin	0.75	0.10-5.45	0.08	0.78
<b>BMI</b>	1.01	0.95-1.07	0.03	0.85
<b>Systolic Blood Pressure</b>	1.01	0.99-1.02	0.38	0.53
<b>Diastolic Blood Pressure</b>	1.02	0.99-1.05	2.43	0.12
<b>Heart Rate</b>	1.00	0.98-1.02	0.01	0.98
<b>Glomerular Filtration Rate</b>	0.96	0.92-1.02	2.44	0.10
<b>Hematocrit</b>	1.01	0.99-1.01	0.08	0.77
<b>EKG Parameters:</b>				
• AV Delay	0.99	0.99-1.01	0.15	0.69
• QRS Interval	1.00	0.99-1.02	0.81	0.36
• QTc Interval	1.00	0.99-1.01	0.01	0.99
• LVH (EKG)	0.97	0.43-2.08	0.42	0.48
<b>Echocardiographic Parameters:</b>				
• LVEF	0.98	0.94-1.02	0.87	0.35
• LVIDd	0.99	0.95-1.05	0.01	0.89
• Estimated PASP	1.03	0.99-1.08	2.17	0.14
• Transmitral E velocity	1.00	0.99-1.01	0.25	0.62

• <b>Transmitral A velocity</b>	1.00	0.99-1.02	0.38	0.53
• <b>E/A ratio</b>	1.35	0.73-2.51	0.90	0.34
• <b>Deceleration Time</b>	1.00	0.99-1.01	0.55	0.46
• <b>e' Lateral</b>	0.87	0.72-1.04	2.29	0.12
• <b>e' Medial</b>	0.86	0.71-1.03	2.45	0.07
<b>Cardiac Magnetic Resonance:</b>				
• <b>LVEDV</b>	1.00	0.99-1.01	0.23	0.64
• <b>LVESV</b>	1.00	0.99-1.02	0.42	0.52
• <b>LVEF</b>	1.03	0.99-1.07	1.78	0.18
• <b>LV Mass index</b>	1.02	1.00-1.03	5.25	0.02
• <b>RVEDV</b>	1.00	0.99-1.01	1.74	0.19
• <b>RVESV</b>	1.00	0.99-1.01	1.35	0.24
• <b>RVEF</b>	1.00	0.96-1.05	0.02	0.86
• <b>Indexed Maximal LA volume</b>	1.02	1.00-1.03	4.71	0.03
• <b>Indexed Minimal LA Volume</b>	1.03	1.00-1.06	5.47	0.02
• <b>Extracellular Volume Fraction</b>	1.35	1.21-1.51	24.6	<0.0001

Abbreviations as per Table 4

<b>Table 2: Multivariate model for Association with Death, Heart Failure Admission or the development of recurrent Atrial Fibrillation</b>				
	HR	CI	LR $\chi^2$	<i>p</i> Value
<b>Sleep Apnea</b>	2.06	1.11-3.84	5.18	0.02

<b>LV Mass index</b>	1.00	0.99-1.01	1.00	0.76
<b>Indexed Minimal LA Volume</b>	1.02	0.99-1.04	2.39	0.12
<b>Extracellular Volume Fraction</b>	1.24	1.19-1.29	19.8	<0.0001

Abbreviations as per Table 4

**Figure 1:**

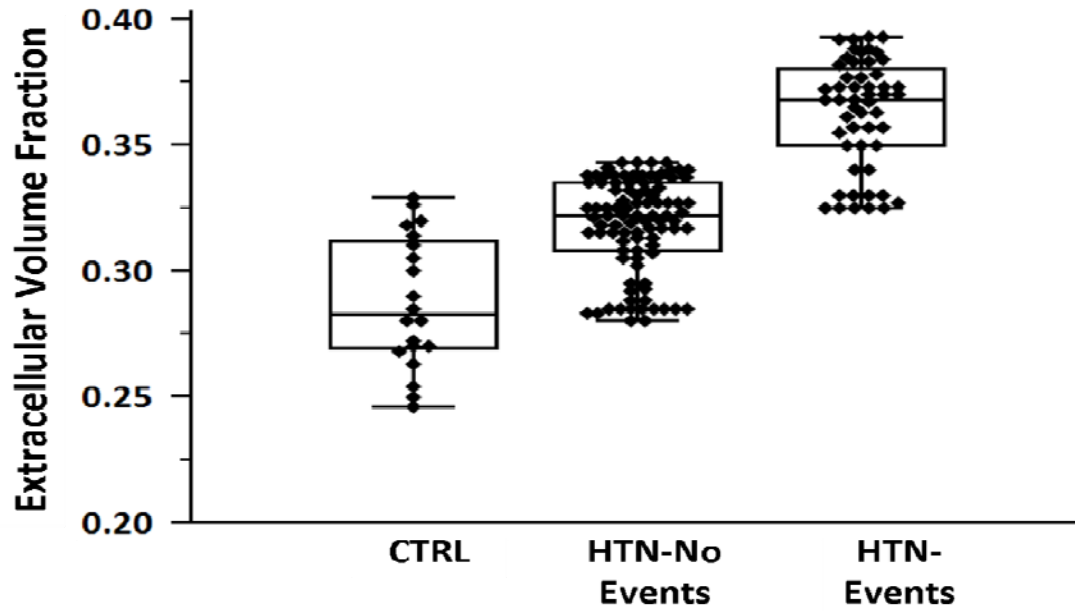
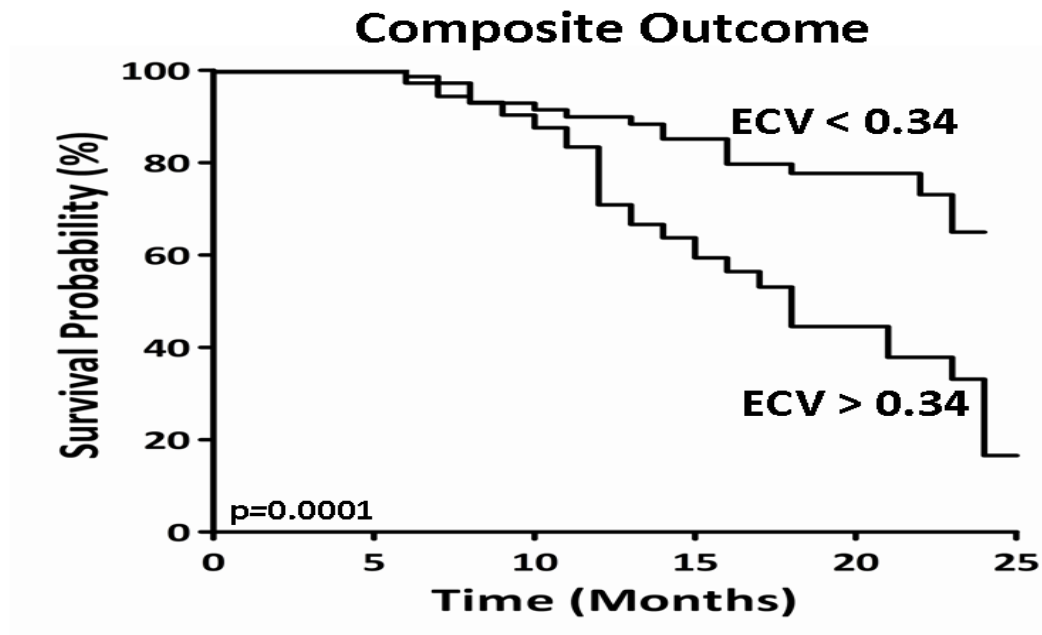


Figure 2:



**Number at Risk**

ECV > 0.34	72	72	65	44	22	2
ECV < 0.34	73	73	63	49	30	1