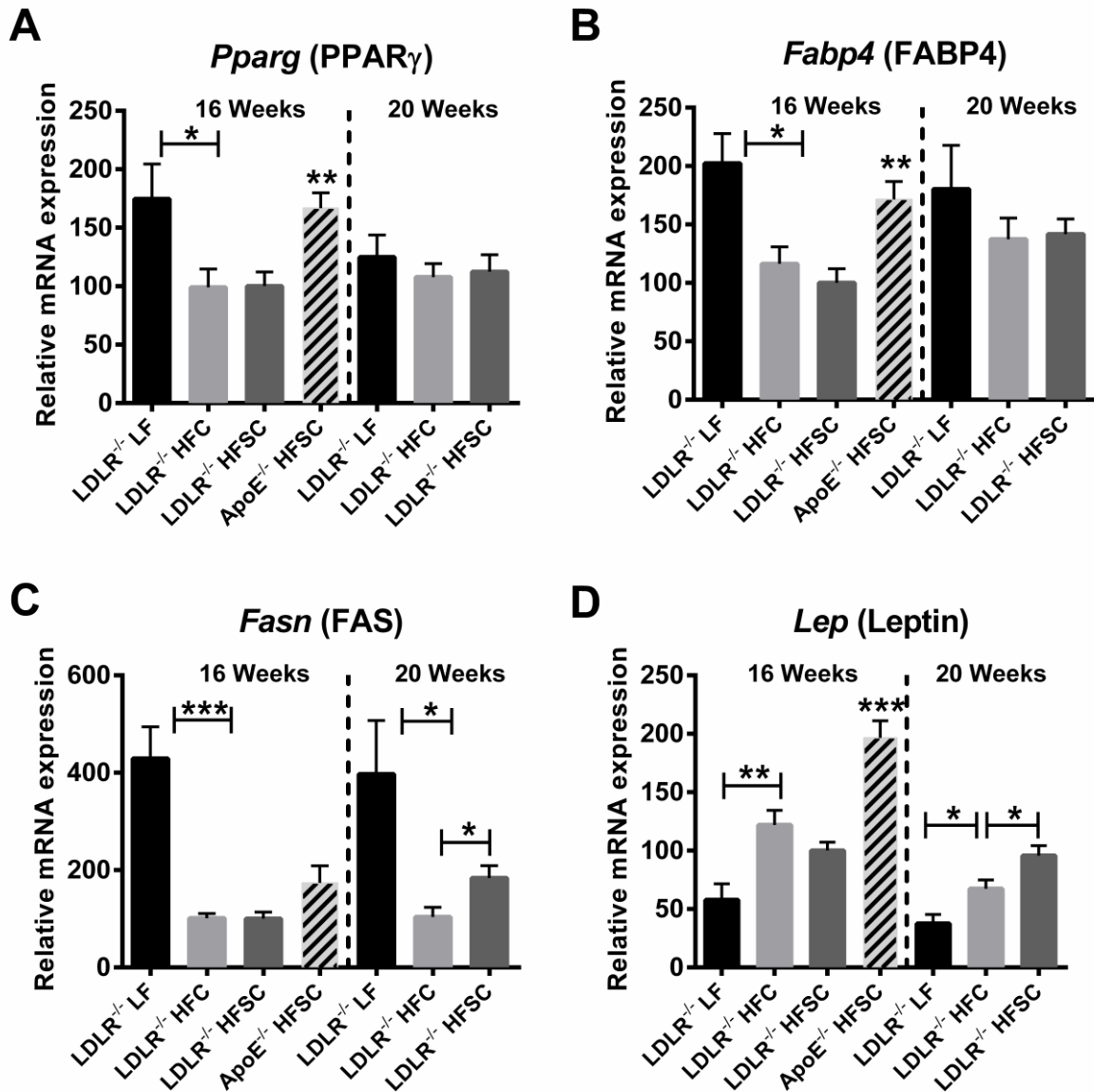


Additional Figure 4



Additional Figure 4: LDLR^{-/-} mice were fed HFSC, HFC or LF for 16 weeks or 20 weeks ($n = 6$ animals per group). ApoE^{-/-} mice were fed HFSC for 16 weeks ($n = 8$ animals per group). Gonadal adipose tissue expression of the genes for PPAR γ (*Pparg*) (A), FABP4 (*Fabp4*) (B), and fatty acid synthase (FAS; *Fasn*) (C), and Leptin (*Lep*) (D) was determined by real-time RT-PCR. For statistical analysis LDLR^{-/-} mice fed HFSC or LF were compared with HFC-fed LDLR^{-/-} mice. In addition, LDLR^{-/-} and ApoE^{-/-} mice both fed HFSC were compared. All data represent mean \pm SEM. * $P < 0.05$, ** $P < 0.01$, *** $P < 0.001$