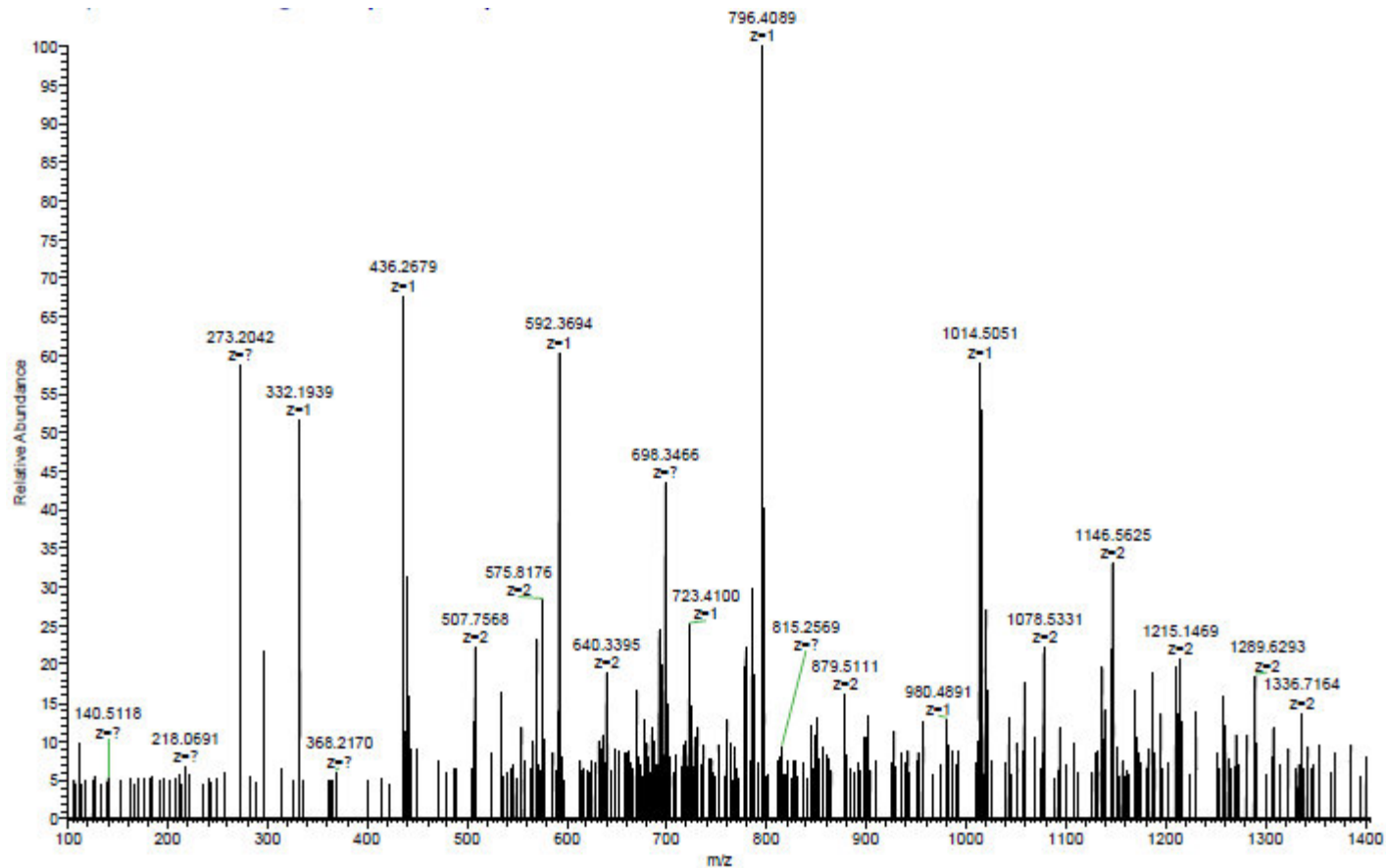
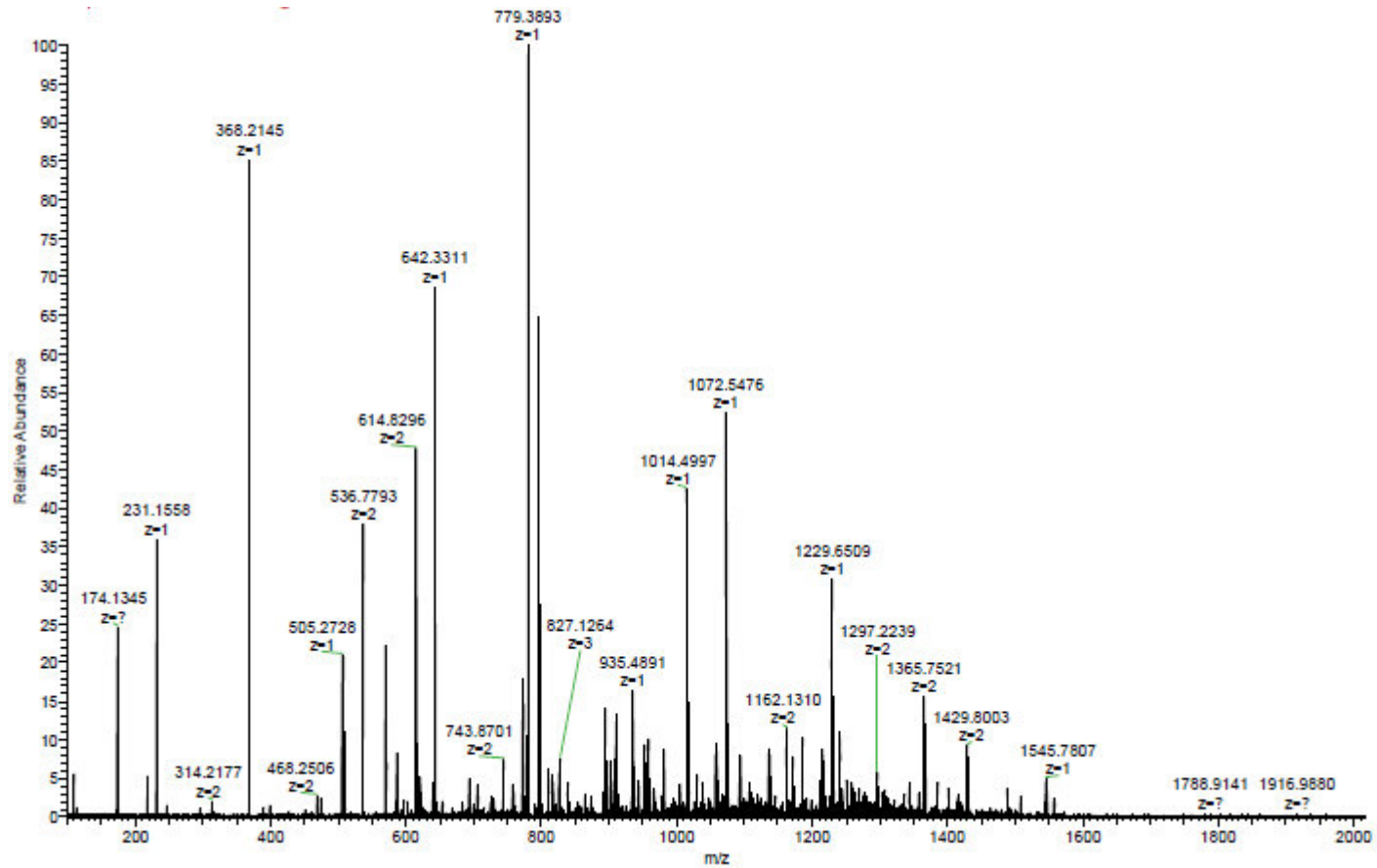


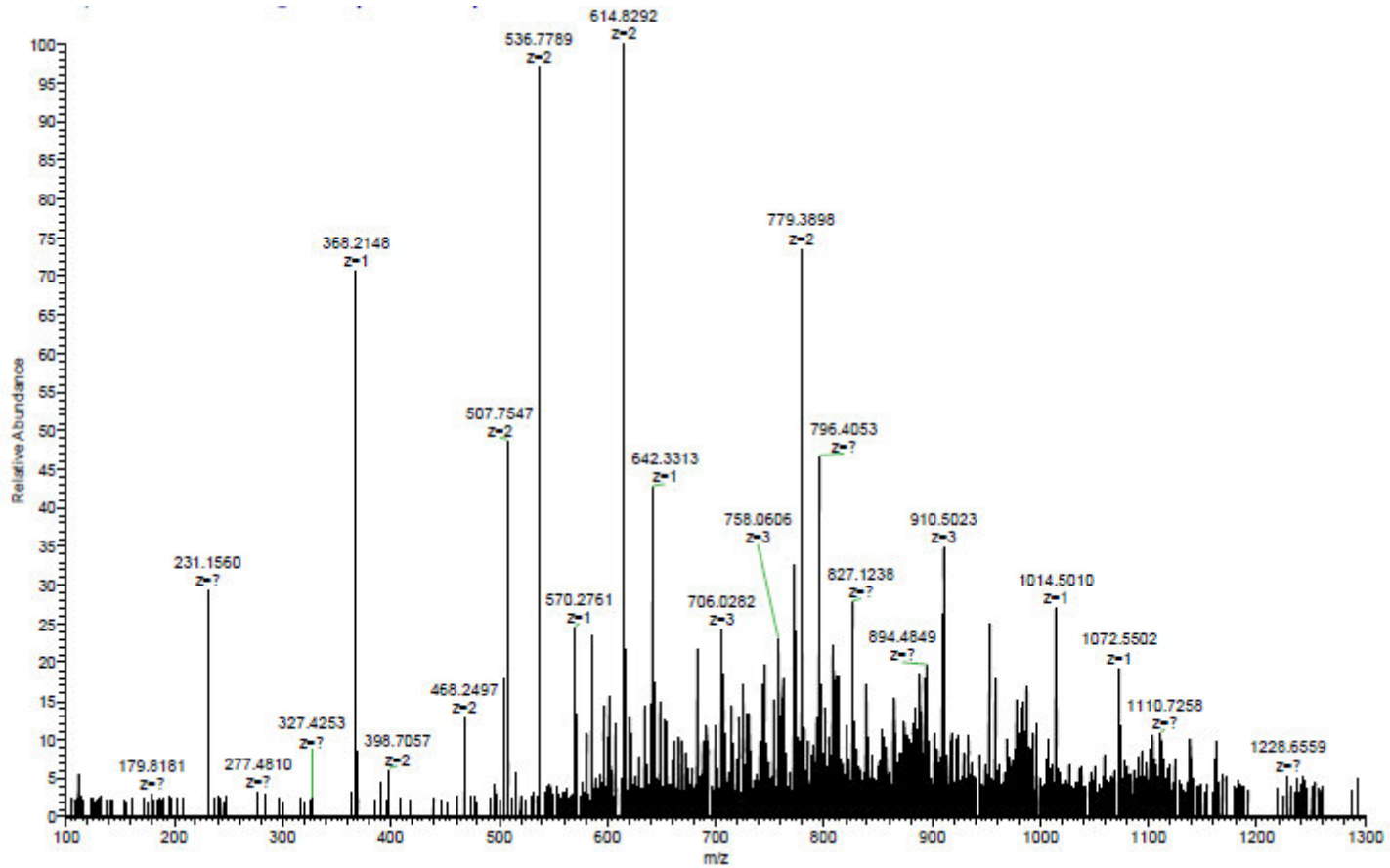
### PRM2 (2 – 106)



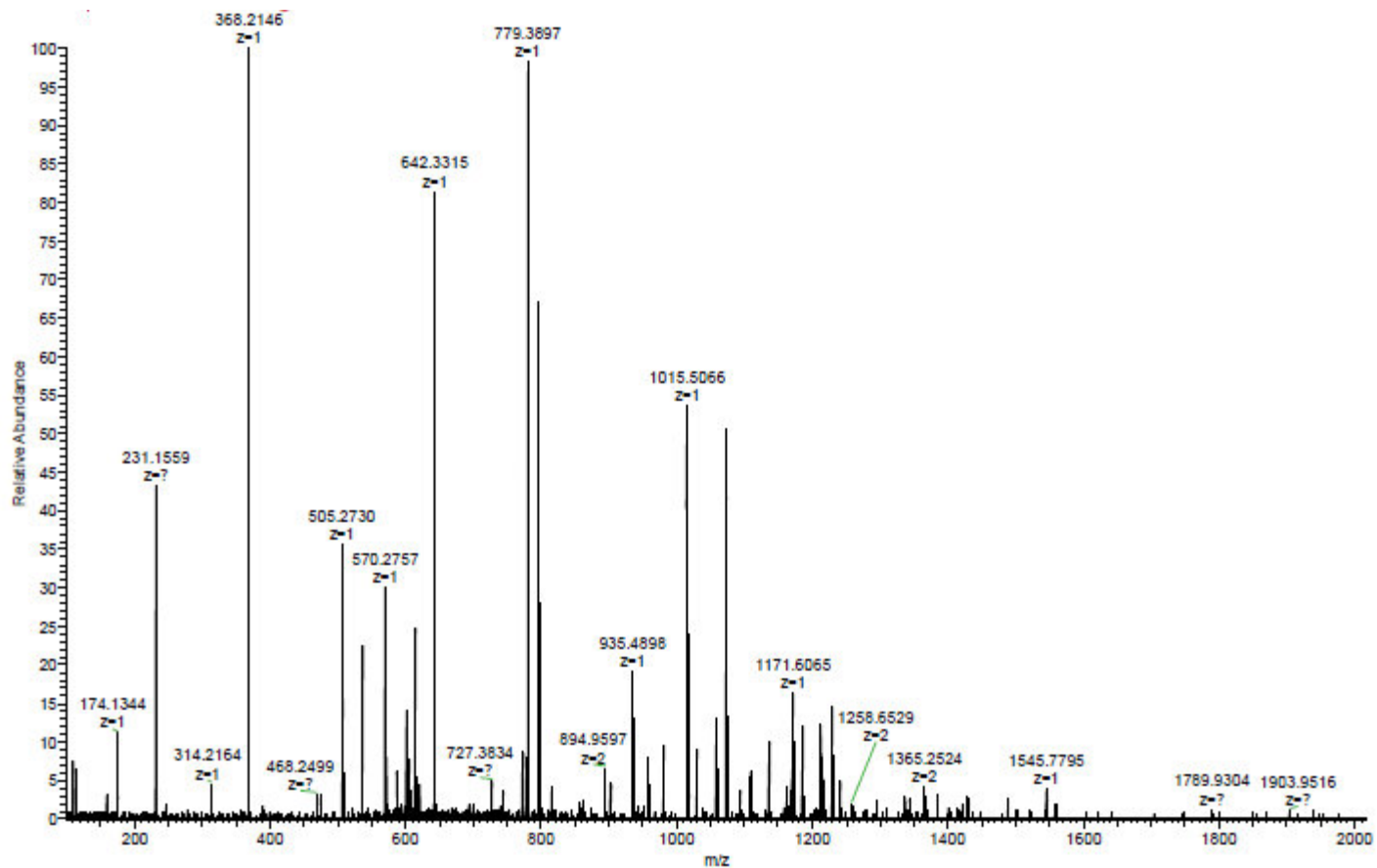
# PRM2 (44 – 106)



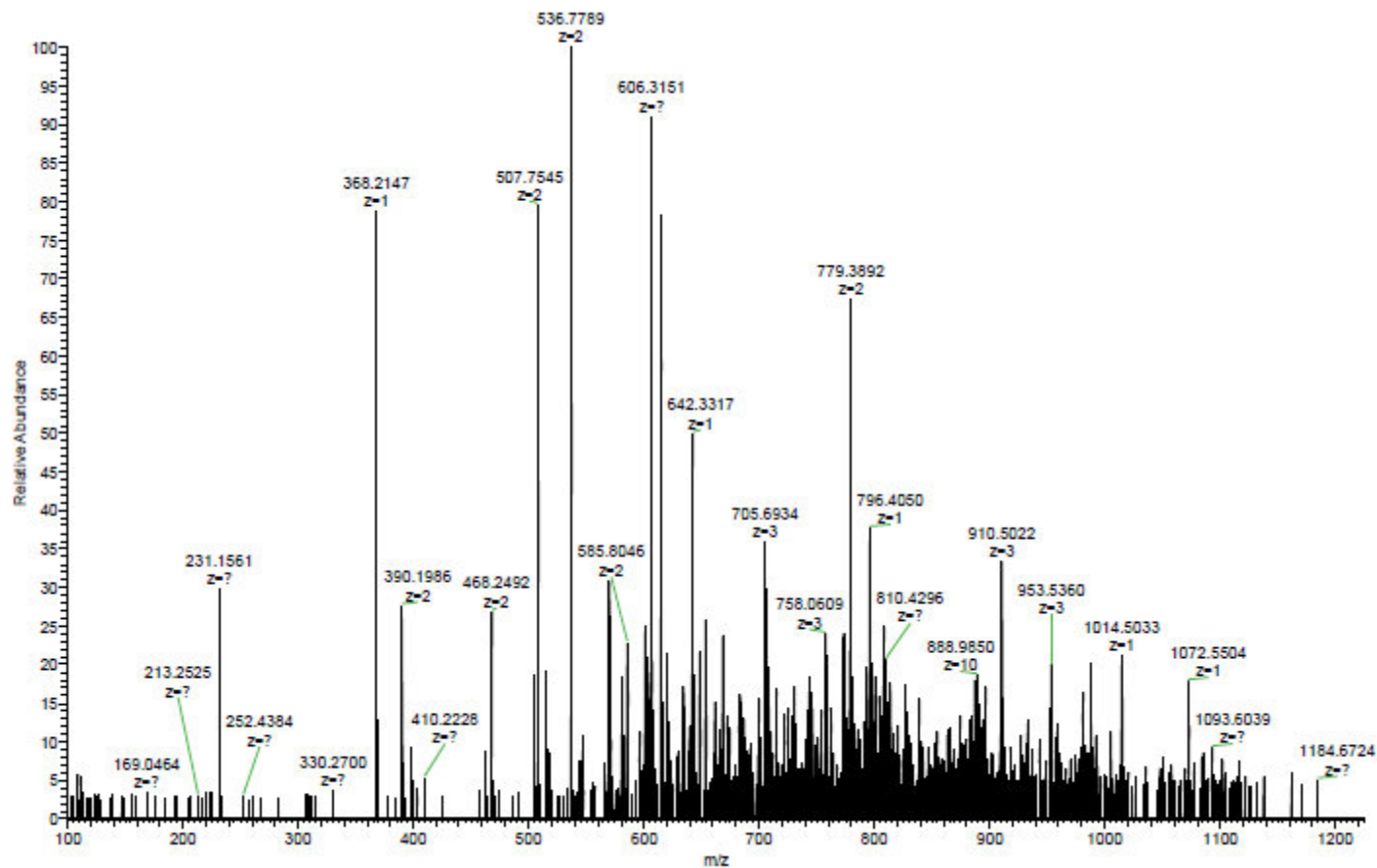
# PRM2 (44 – 106)



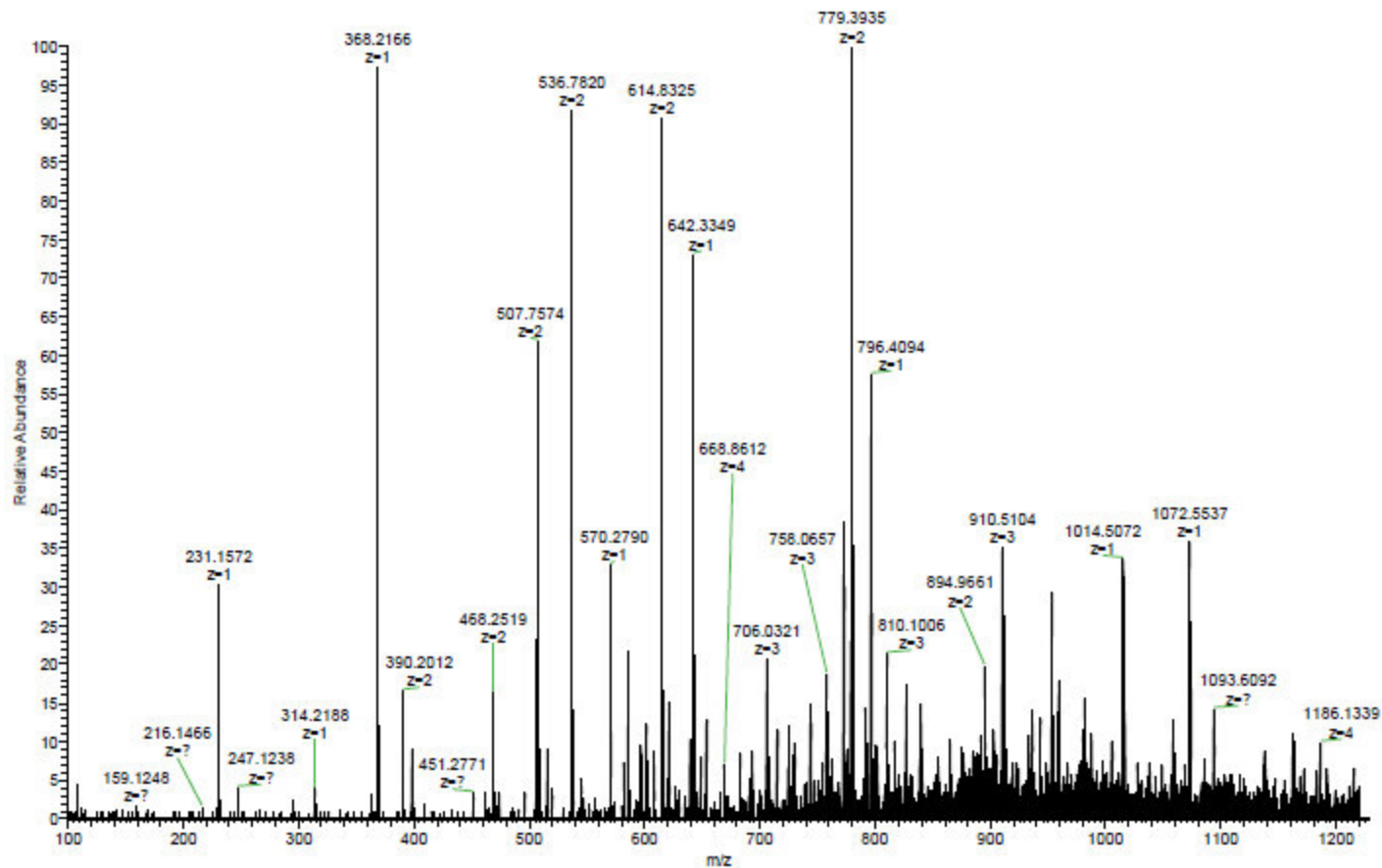
# PRM2 (44 – 106) S55p



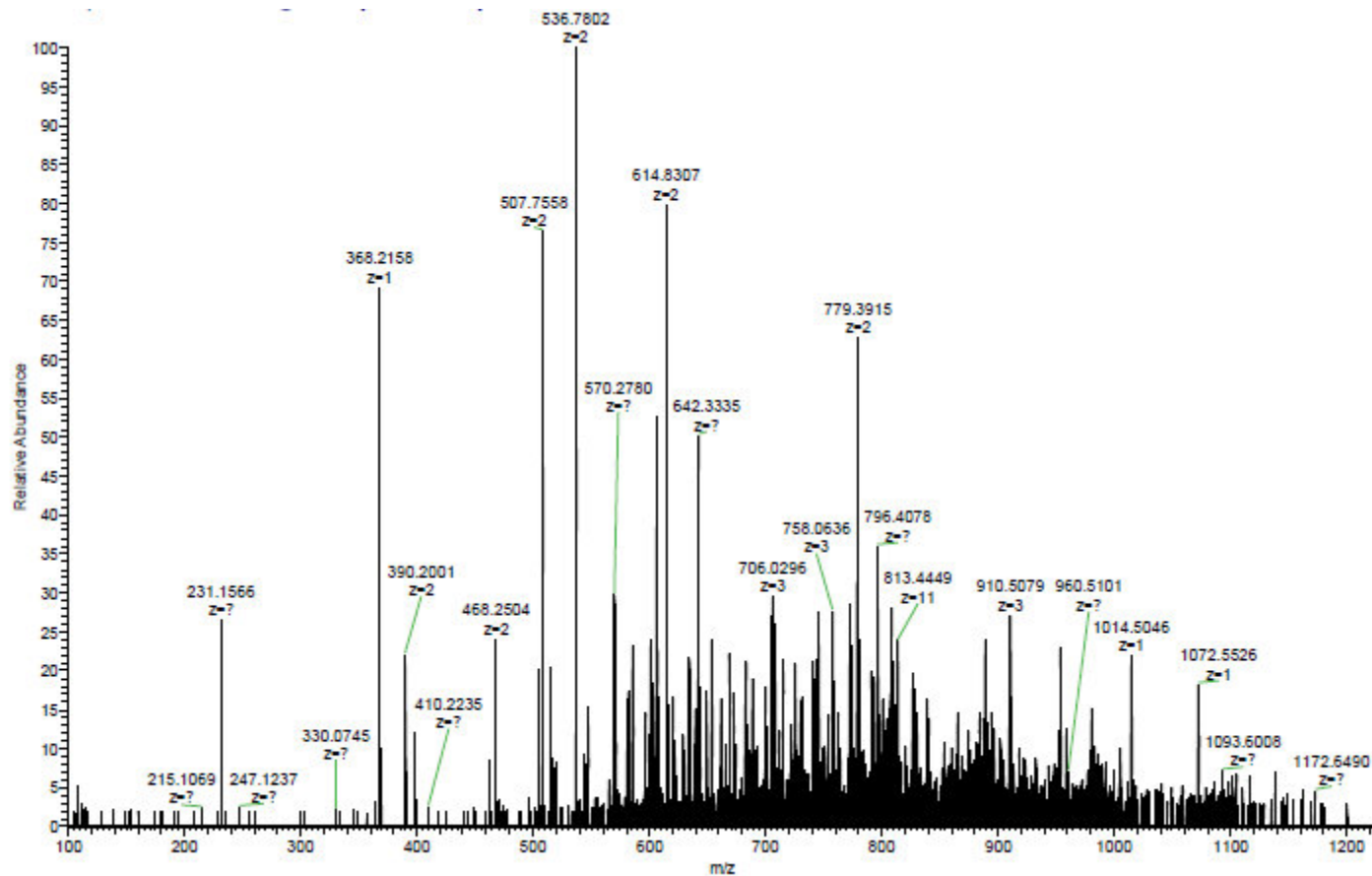
# PRM2 (44 – 106) S55p



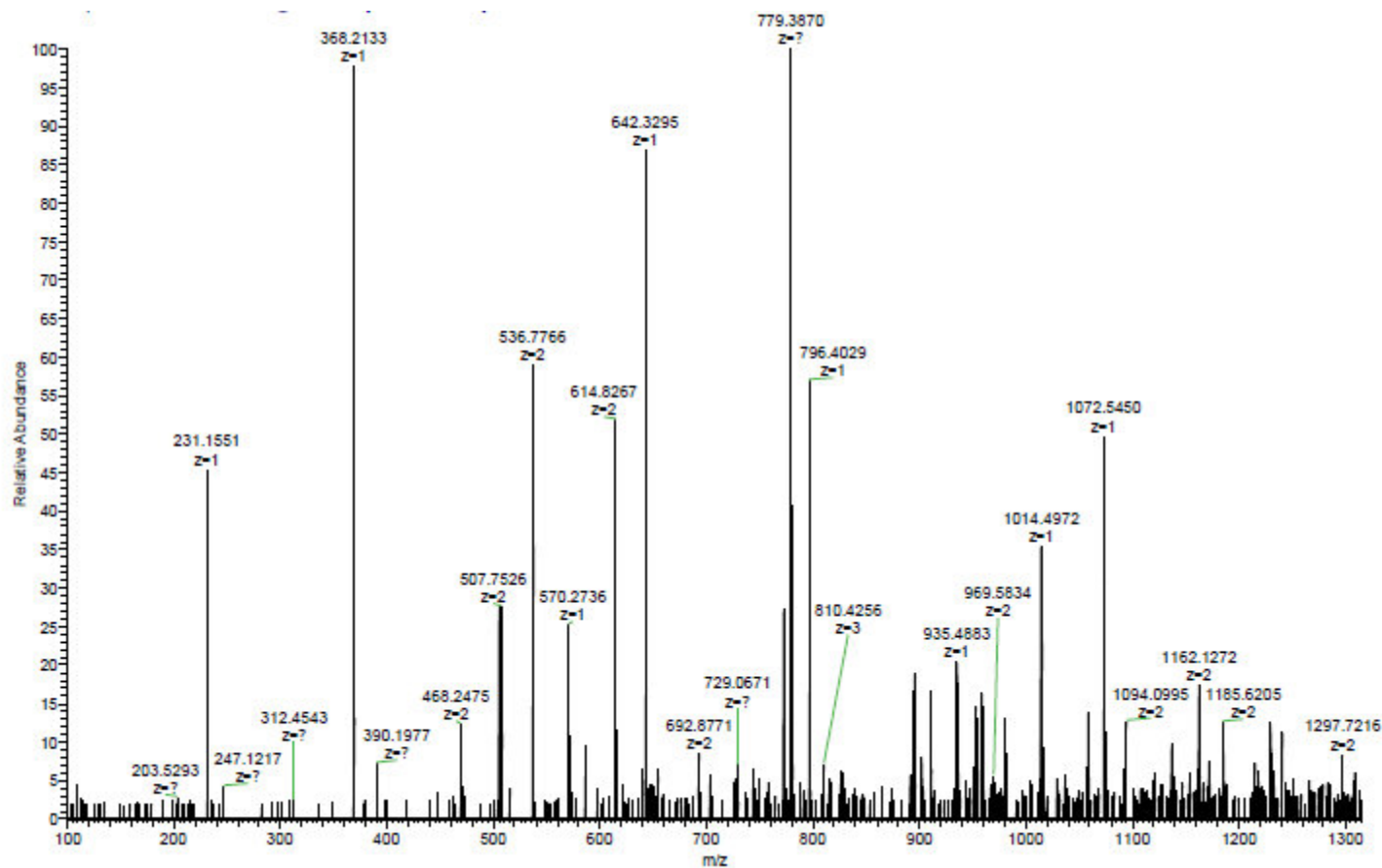
PRM2 (44 – 106) S55ac;  
K57ac;



PRM2 (44 – 106) S55ac and K57ac;  
S55/K57ac and K64ac;  
S55/K57ac and K90ac

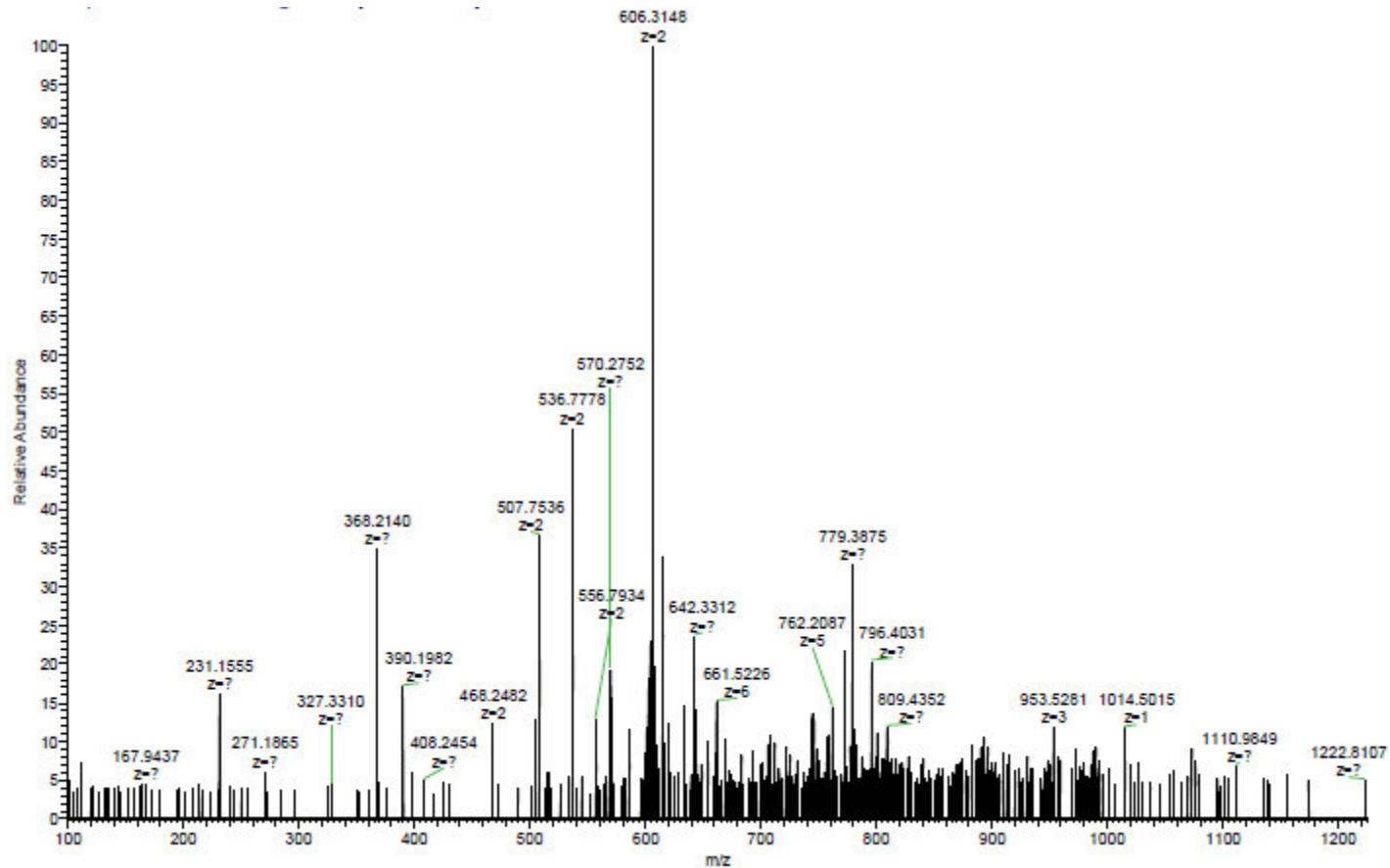


PRM2 (44 – 106) S55ac, S90ac and (R89me1);  
K57ac, S90ac and (R89me1);

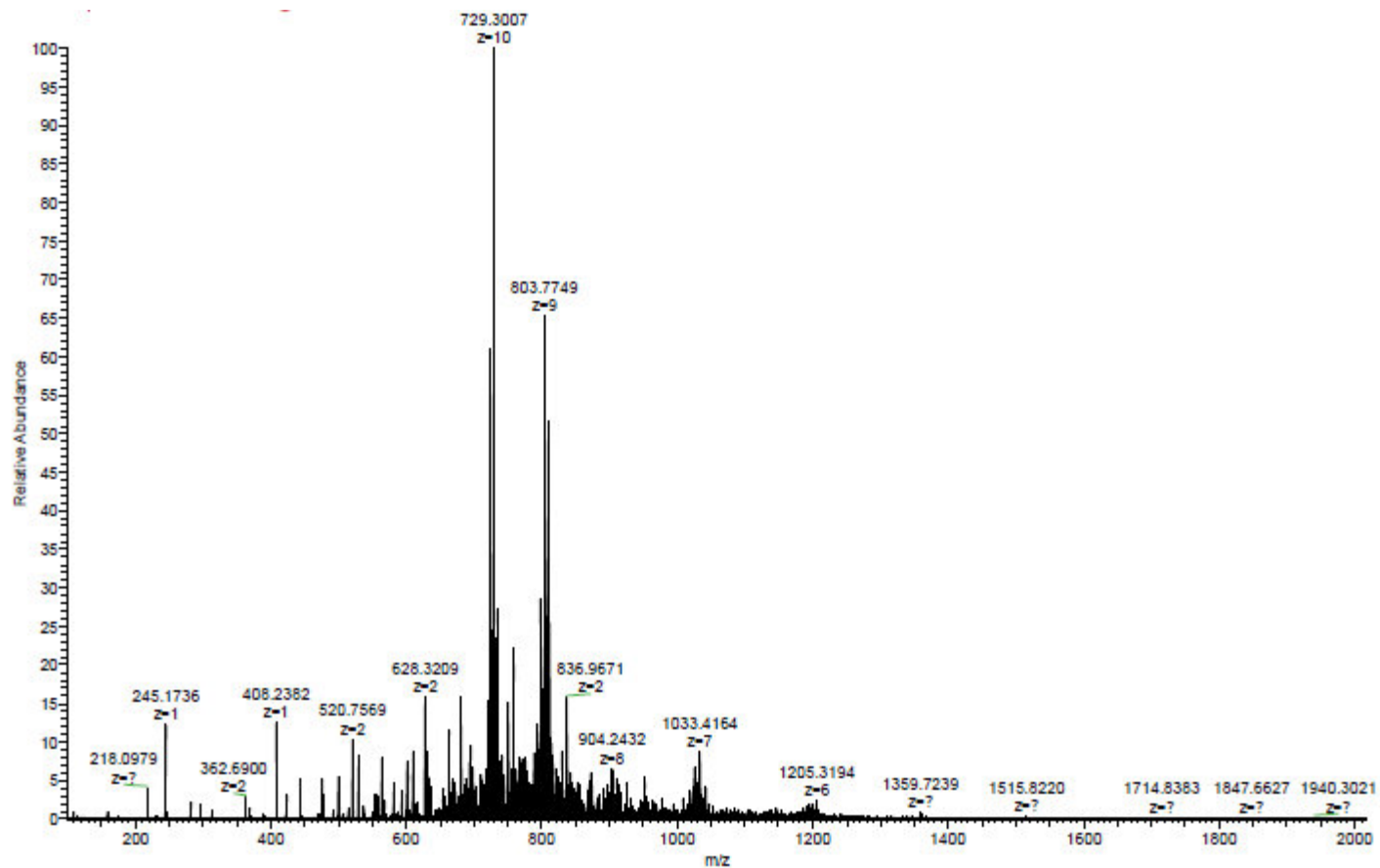




PRM2 (44 – 106) S55ac, S90ac and (R89me1);  
K57ac, S90ac and (R89me1);



# PRM1 (2-51)



# PRM1 (2-51)

