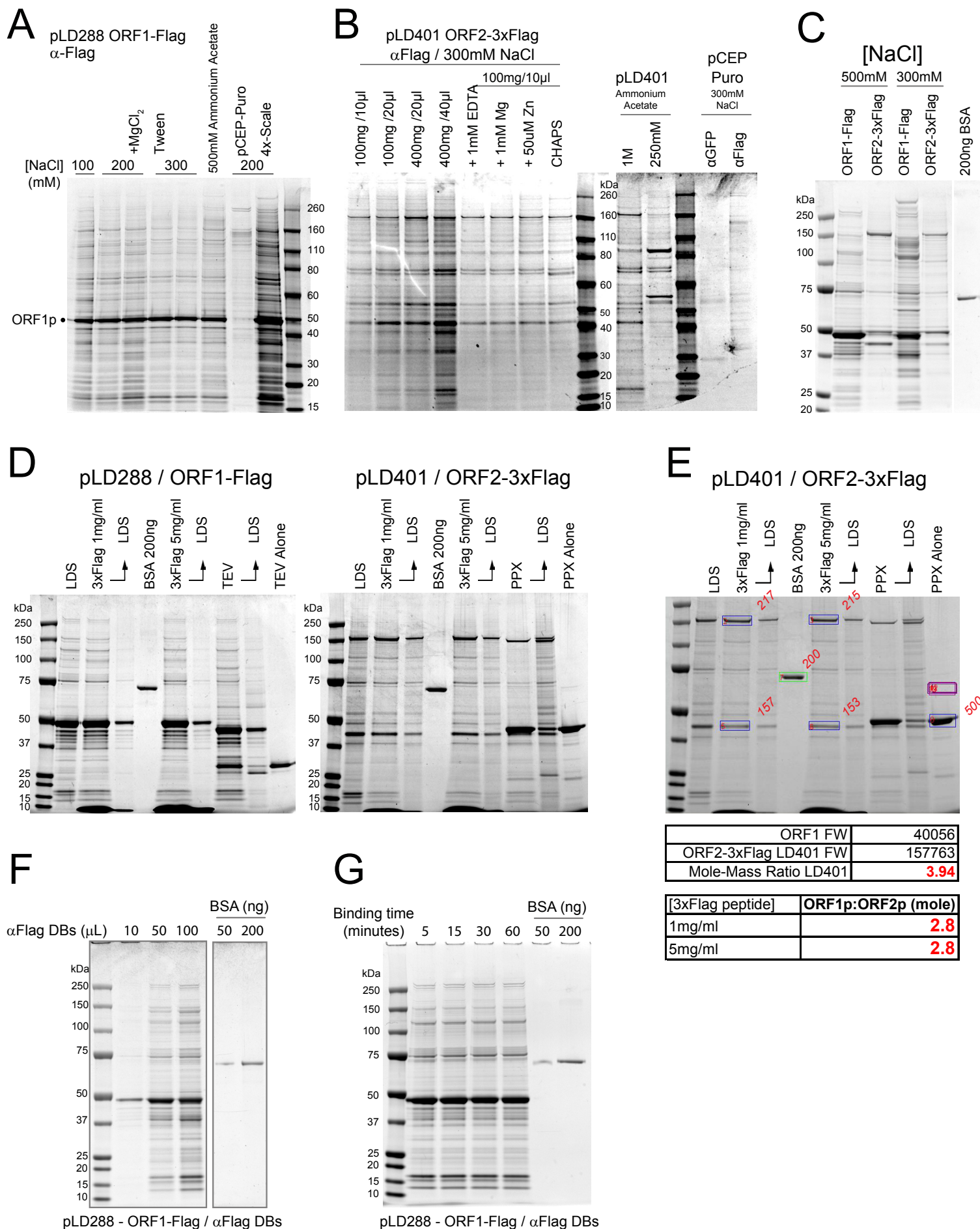
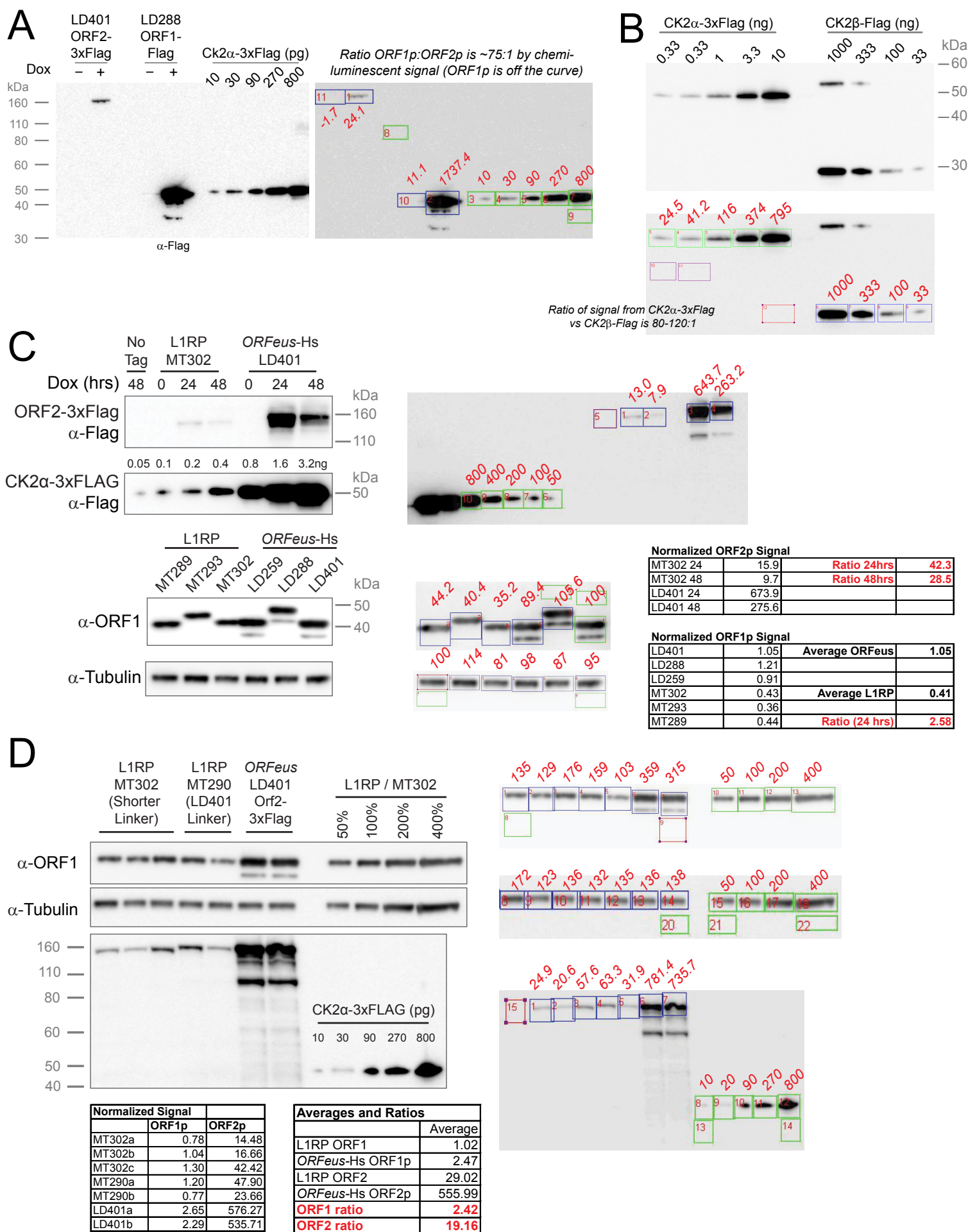


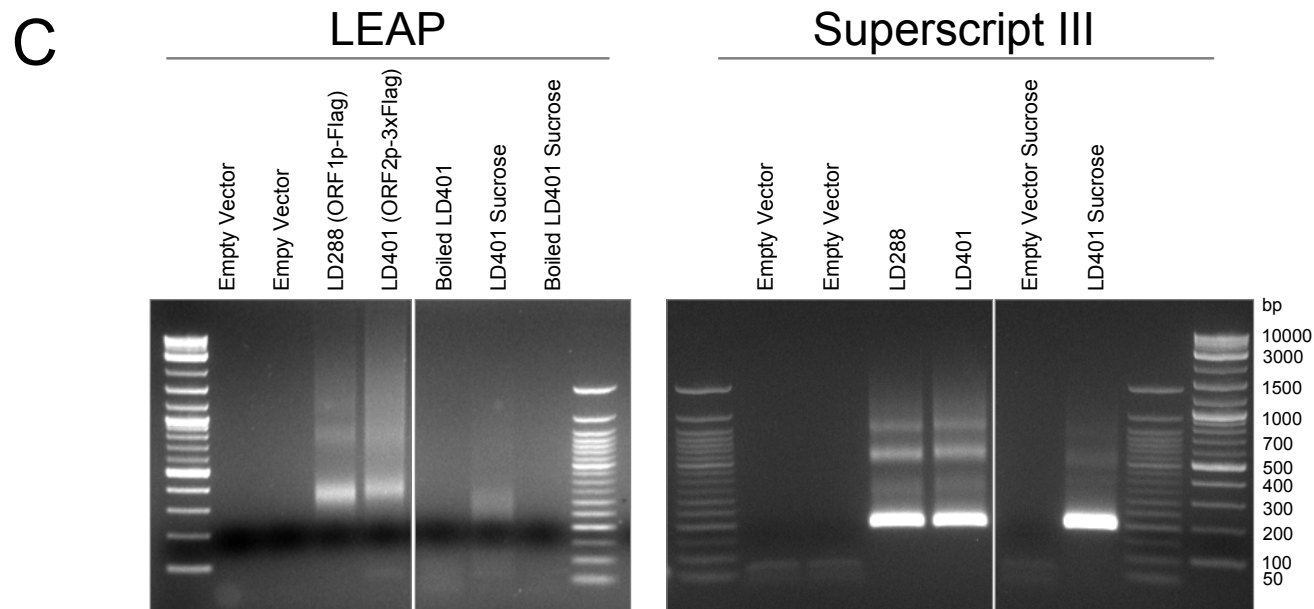
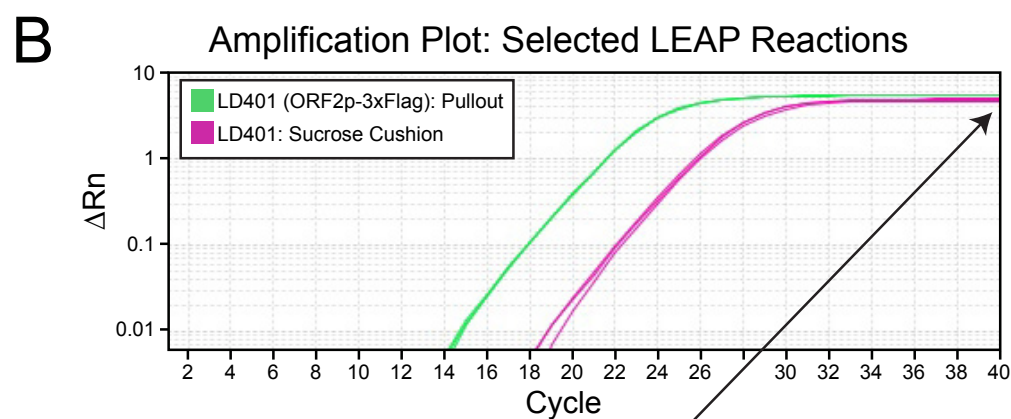
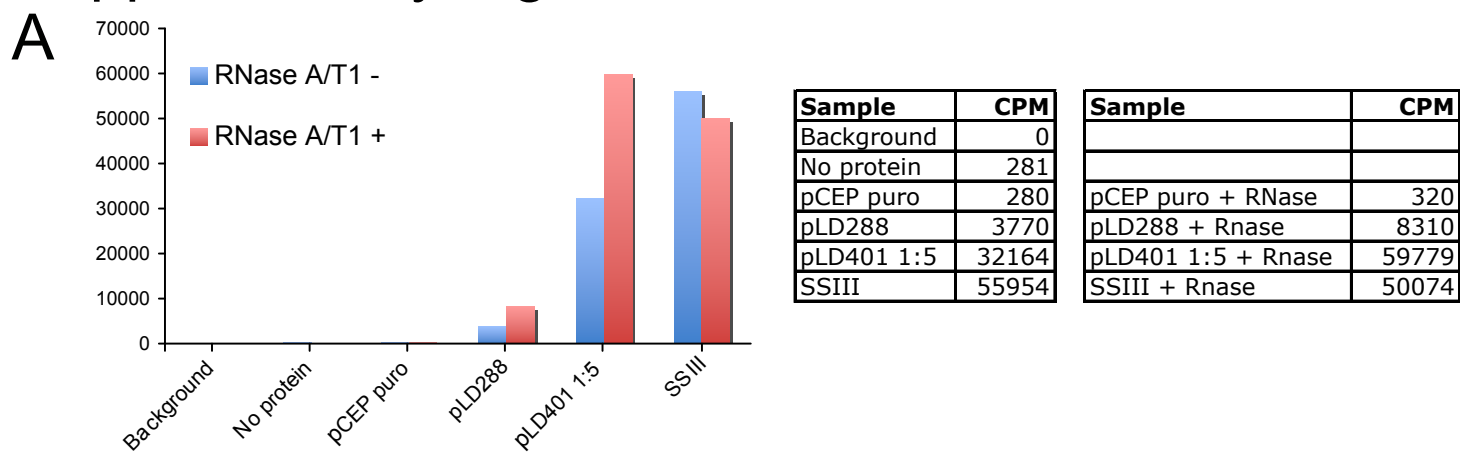
Supplementary Figure 1



Supplemental Figure 2



Supplemental Figure 3



D

Total Sample RNA (ng/μl, Trizol extraction --> Nanodrop)

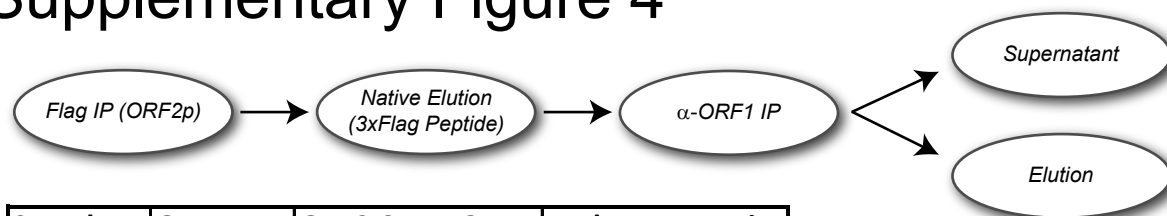
Sample	Read 1	Read 2	Read 3	Average (ng/μl)	Std Dev
LD401 Pullout	1.9	1.5	2.2	1.87	0.35
LD401 Sucrose Cushion	1234.8	1211.4	1236.3	1227.50	13.96

658 fold difference

Comparing ORF2p Pullout to Sucrose Cushion:

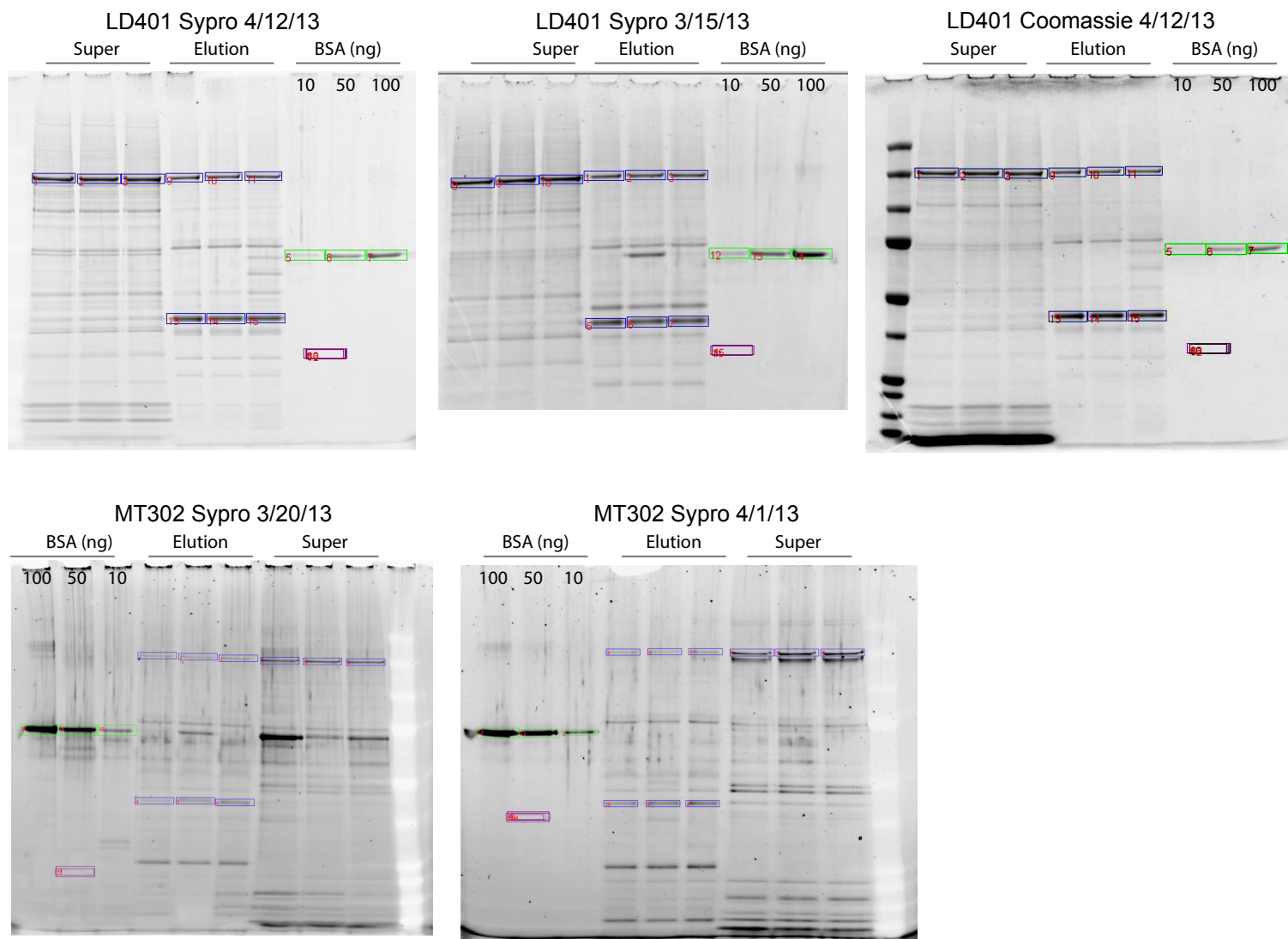
Relative LEAP signal	19.92	fold (pullout higher)
Relative L1 RNA via SuperScript III	0.29	fold (cushion higher)
L1 RNA enriched vs total RNA by	194.0	fold
LEAP signal per ng total RNA enriched by	13099.2	fold

Supplemental Figure 4



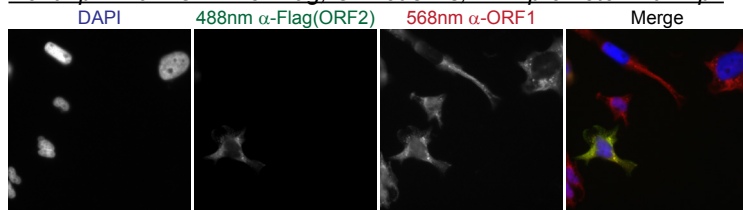
Sample	ORF1 FW	ORF2-3xFLAG FW	Mole-Mass Ratio
LD401	40,056.00	157,762.90	3.94
MT302	40,056.00	153,156.80	3.82

Source Cells	Sample	Background	Date	Method	Average ORF2 (ng)	Average ORF1 (ng)	ORF1:ORF2 (mole)
1/6/2012, 9/8/12	LD401	<i>ORFeus</i> -Hs	15-Mar	Sypro	52.95	73.57	5.5
3/28/2013	LD401	<i>ORFeus</i> -Hs	12-Apr	Sypro	100.37	154.30	6.1
3/28/2013	LD401	<i>ORFeus</i> -Hs	12-Apr	Coomassie	90.42	174.89	7.6
8/27/2012	MT302	L1RP	20-Mar	Sypro	3.31	4.91	5.7
8/27/2012	MT302	L1RP	1-Apr	Sypro	2.41	5.42	8.6

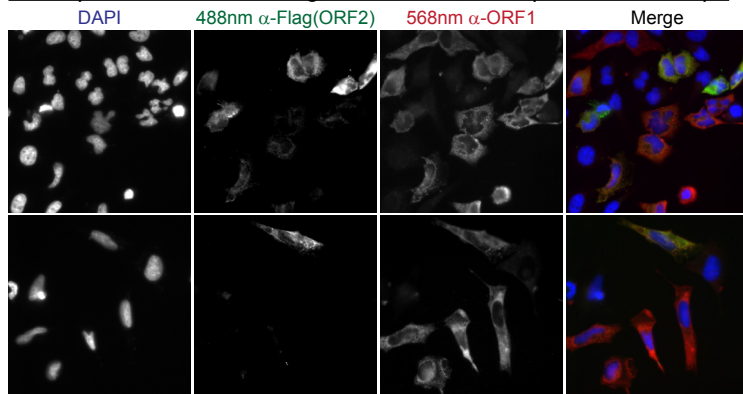


Supplementary Figure 5

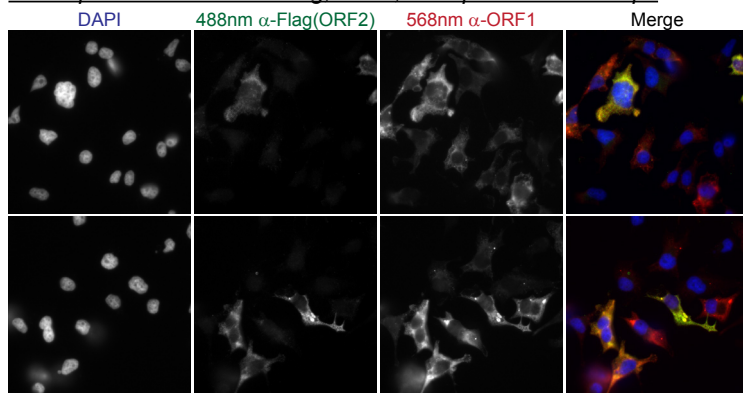
HeLa. pLD401: ORF2-3xFlag, ORFeus-Hs, TRE promoter. 40x Epi.



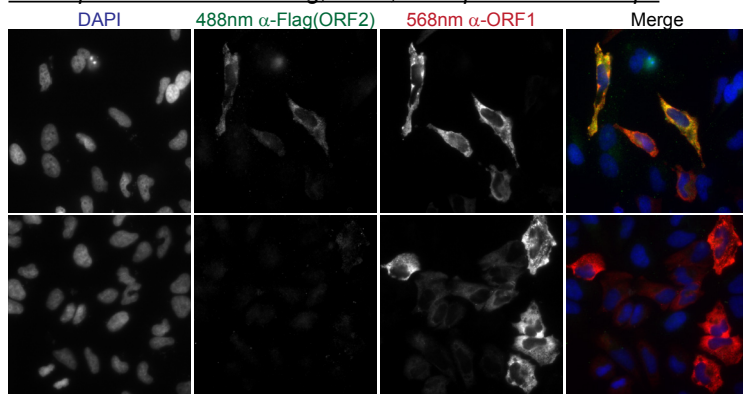
HeLa. pLD563: ORF2-3xFlag, ORFeus-Hs, CMV promoter. 40x Epi.



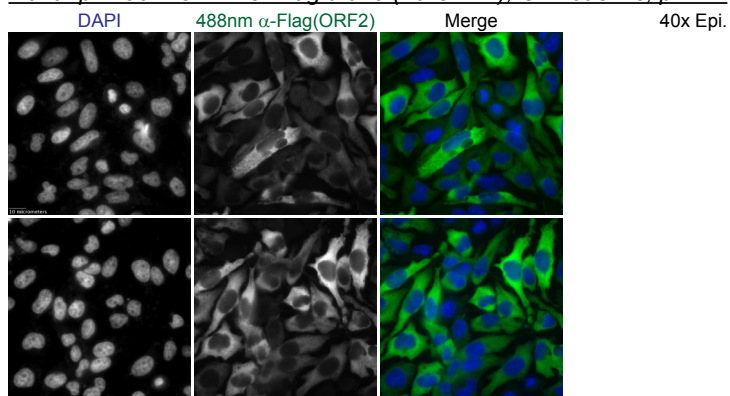
HeLa. pMT302: ORF2-3xFlag, L1RP, TRE promoter. 40x Epi.



HeLa. pLD564: ORF2-3xFlag, L1RP, CMV promoter. 40x Epi.

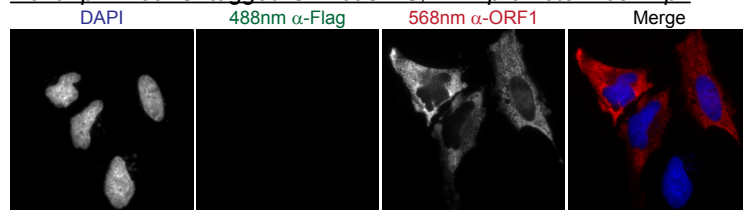


HeLa. pLD561. ORF2-3xFlag alone (no ORF1), ORFeus-Hs, pTRE.

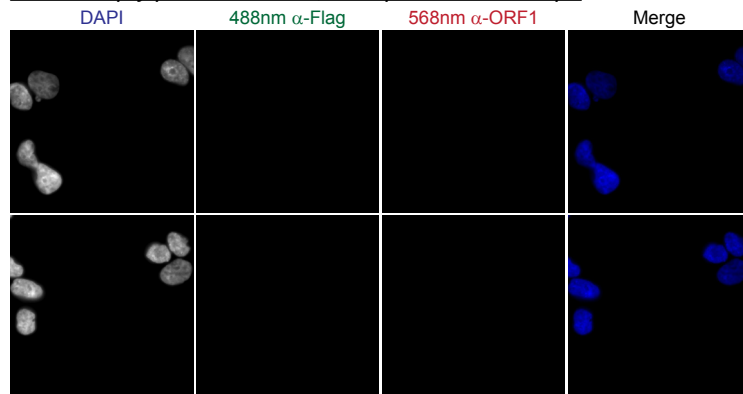


Please note - pLD401, pMT302, pLD561, and empty pCEP-Puro are puromycin-selected. All other panels are transient transfections.

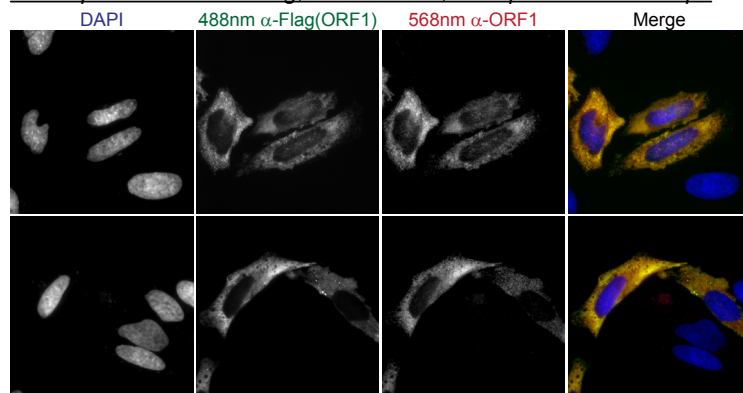
HeLa. pLD259: Untagged ORFeus-HS, TRE promoter. 63x Epi.



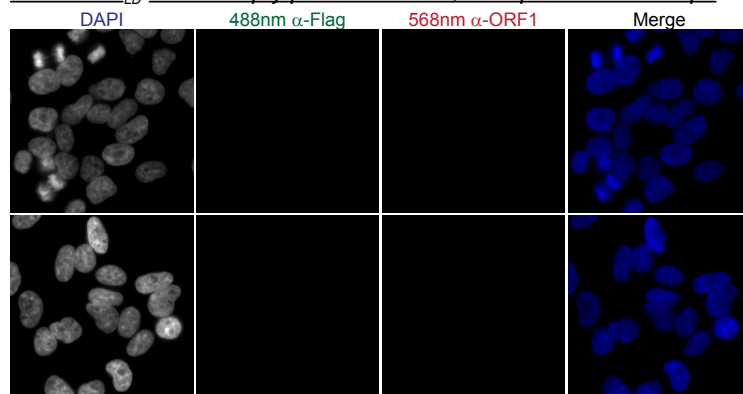
HeLa. Empty pCEP-Puro-Tet, TRE promoter. 63x Epi.



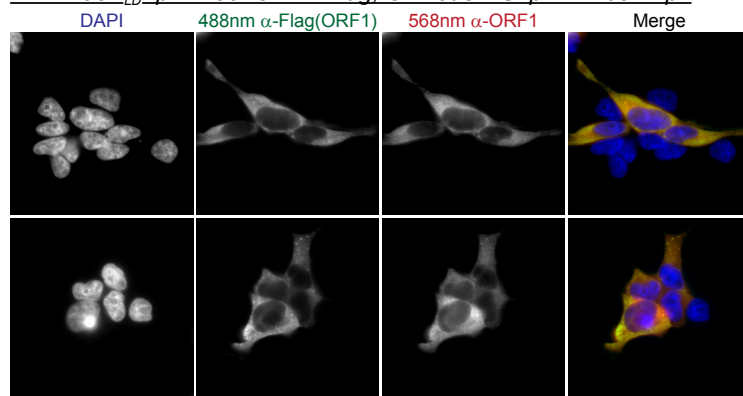
HeLa. pLD288: ORF1-Flag, ORFeus-HS, TRE promoter. 63x Epi.



HEK-293T_{LD} Cells. Empty pCEP-Puro-Tet, TRE promoter. 63x Epi.

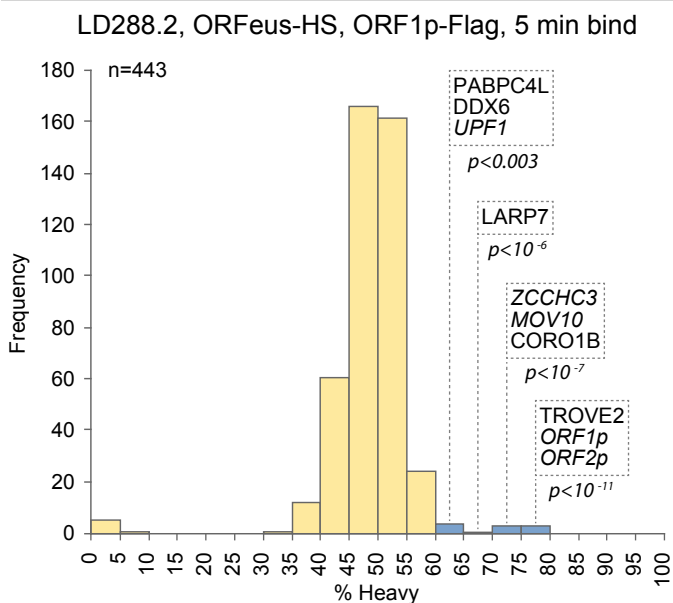


HEK-293T_{LD}. pLD288: ORF1-Flag, ORFeus-HS, pTRE. 63x Epi.

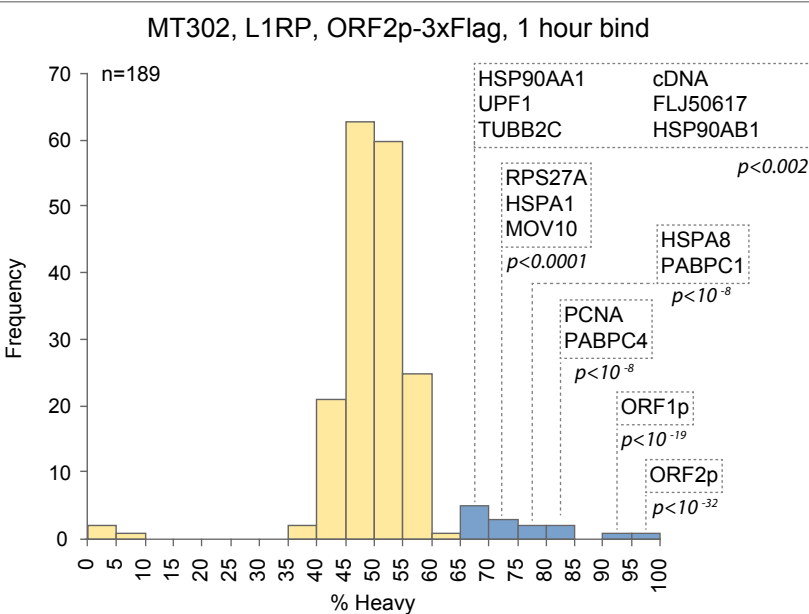
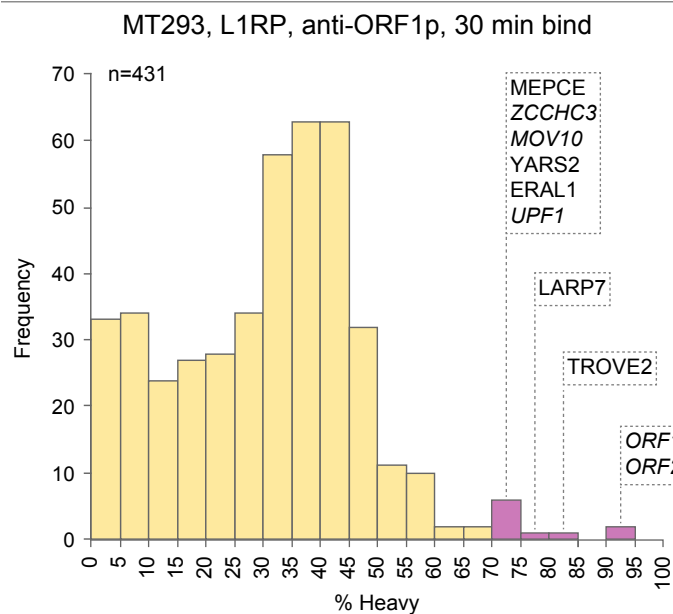
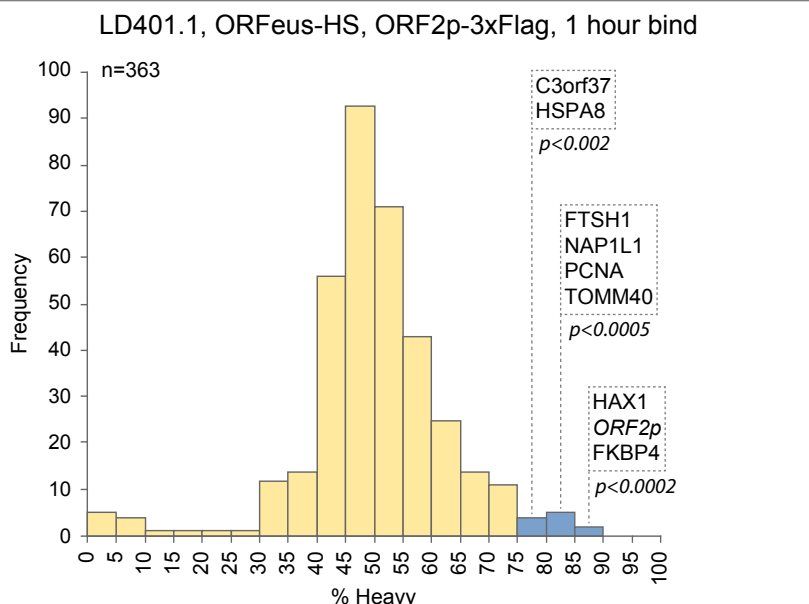
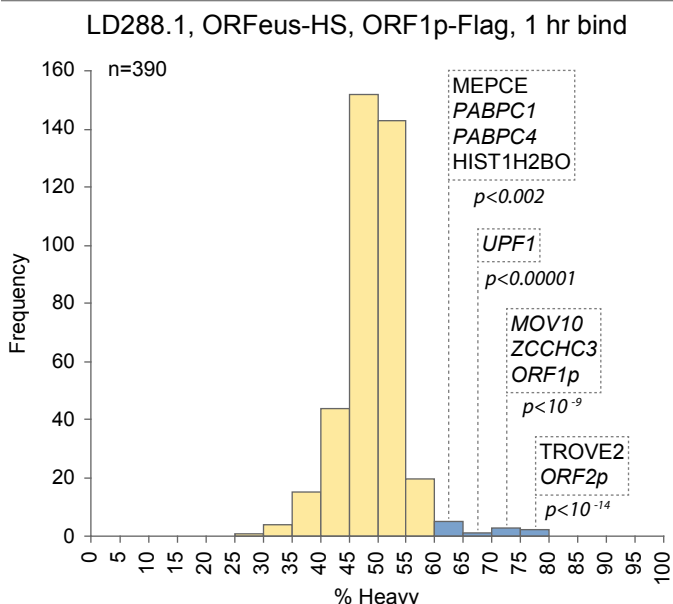
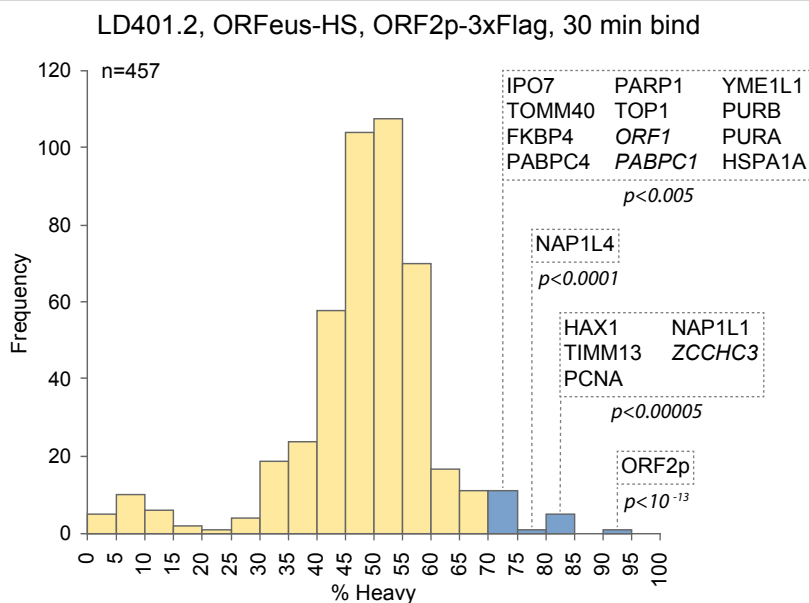


Supplementary Figure 6

ORF1p Pullout I-DIRT



ORF2p Pullout I-DIRT



Significant recovered protein Non-significant recovered protein MT293, above the arbitrary 71% cutoff †

Supplementary Figure 7

