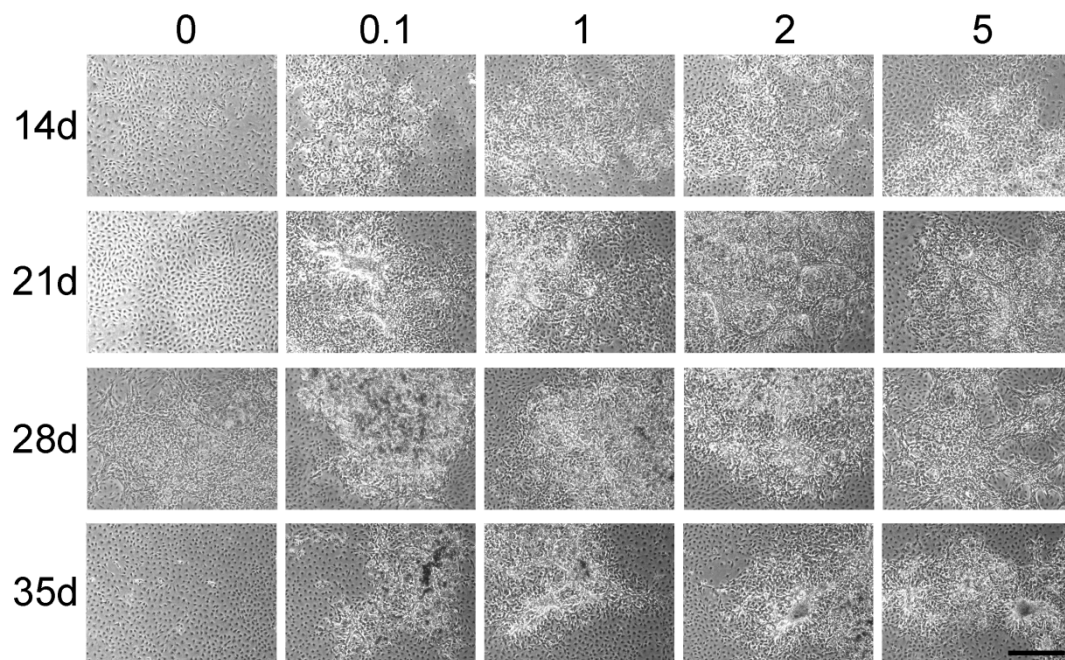
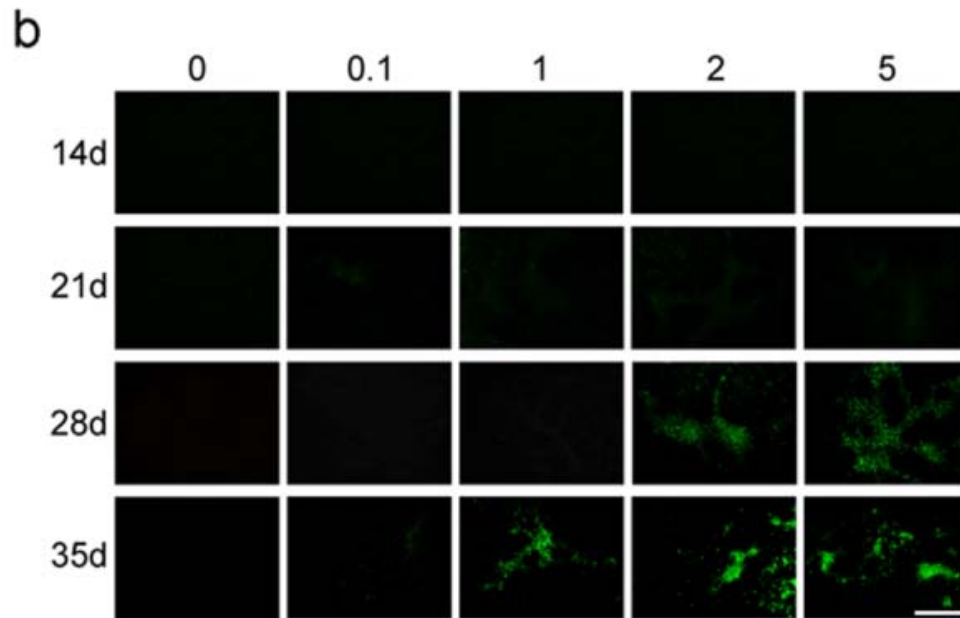


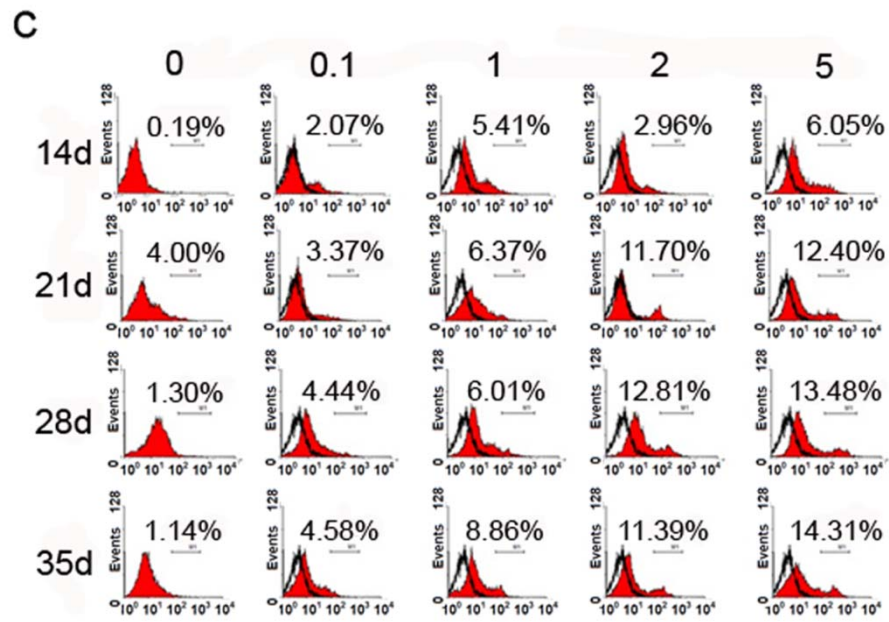
**Figure S1.** BMVC expression of transformed cells in a time- and dose- dependent manner.



(a) Morphological phenotypes of BLAB/c 3T3 cells treated with MCA of different doses (0, 0.1, 1, 2, 5  $\mu\text{g/ml}$ ) and cultured for different periods (14, 21, 28, 35 days); scale bar = 500  $\mu\text{m}$ .



(b) BMVC expressions of MCA-treated cells were detected by fluorescence microscopy; scale bar = 500  $\mu\text{m}$ .



- (c) The percentage of positive BMVC expression of MCA-treated cells was determined and analyzed by flow cytometry