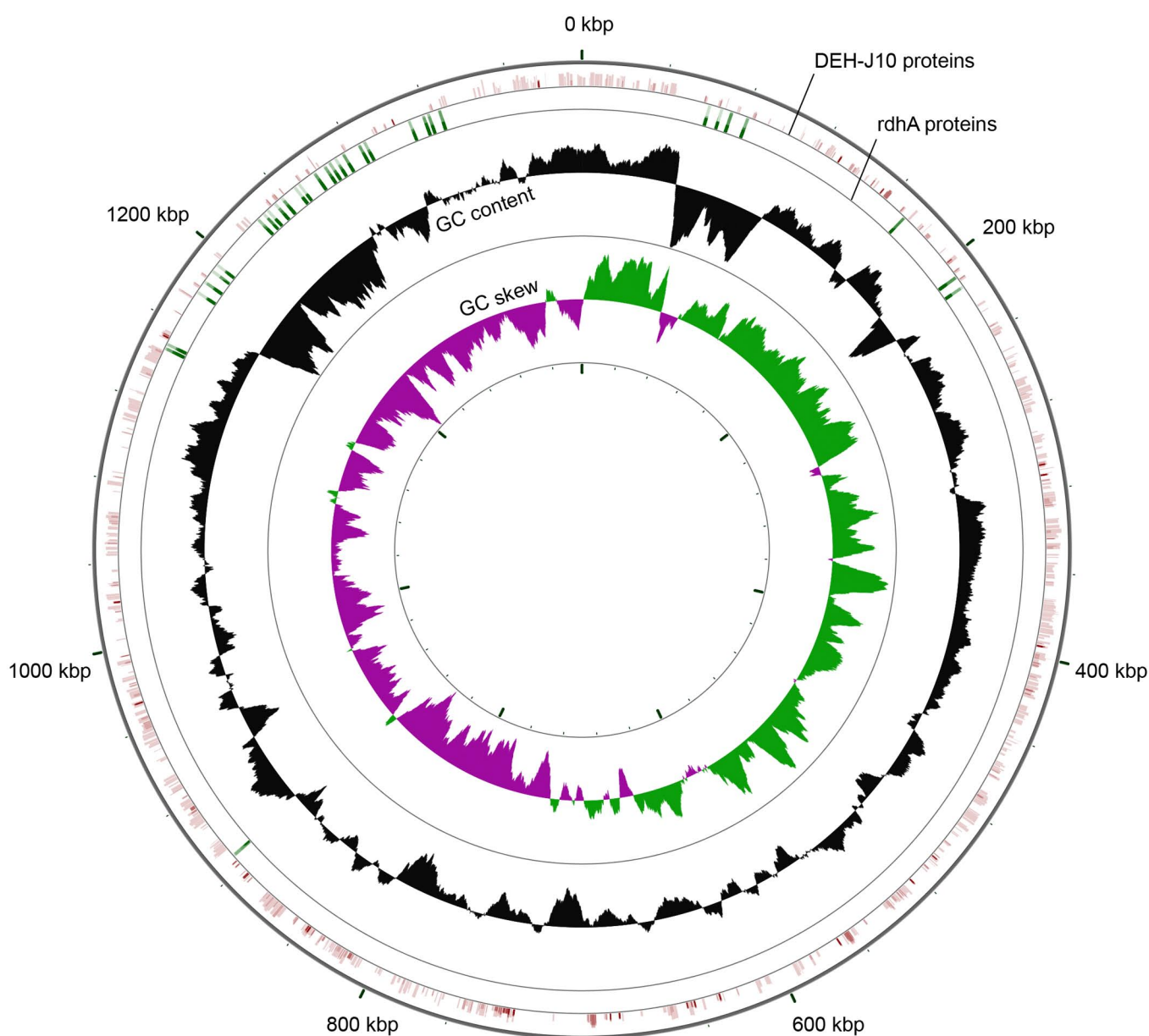
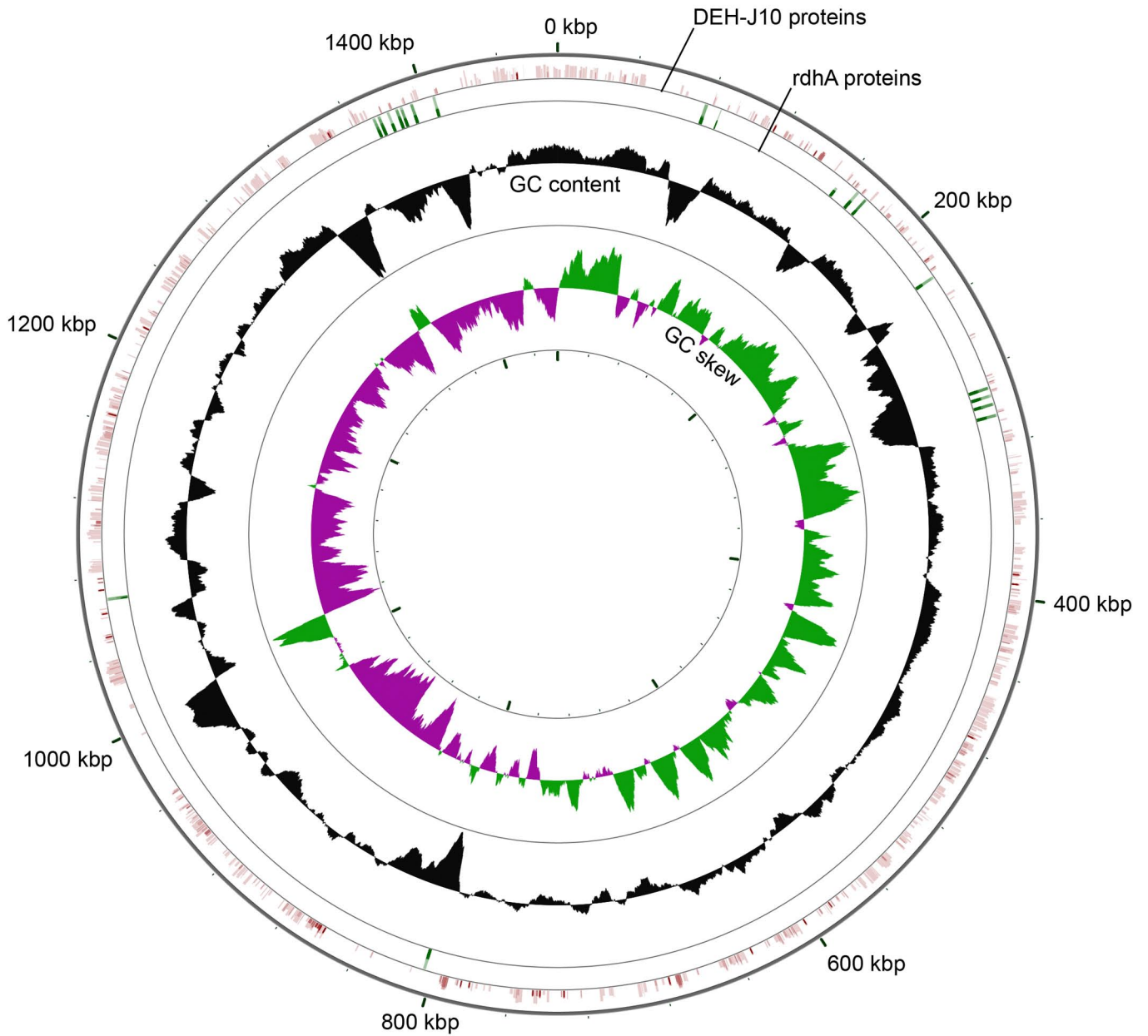


Supplementary Figure 1. Comparison of the genomes of *Dehalococcoides mccartyi* strains CBDB1 (Figure 1A), 195 (Figure 1B), VS (Figure 1C) and *Dehalogenimonas lykanthroporepellens* strain BL-DC-9 (Figure 1D) to protein sequences derived from the single cell DEH-J10 and *Dehalococcoidia*-derived reductive dehalogenase protein A homologs (rdhA). Protein sequences for rdhA were retrieved from the genomes of *Dehalococcoides mccartyi* strains 195, CBDB1, BAV1 and KB1, and *Dehalogenimonas lykanthroporepellens* strain BL-DC-9. Circles from inside to outside: i) GC skew (filled green and purple); ii) GC content (filled black); iii) BLASTX hits for rdh to genome of interest (green bars); BLASTX hits for all protein sequences from single cell DEH-J10 (pink bars). Bar heights are proportional to the percent identity of the hit. Darker bars represent multiple overlapping hits. BLASTX comparisons were made with an e-value threshold of 10^{-10} . Figures were produced using GCView Server: http://stothard.afns.ualberta.ca/cgview_server/.

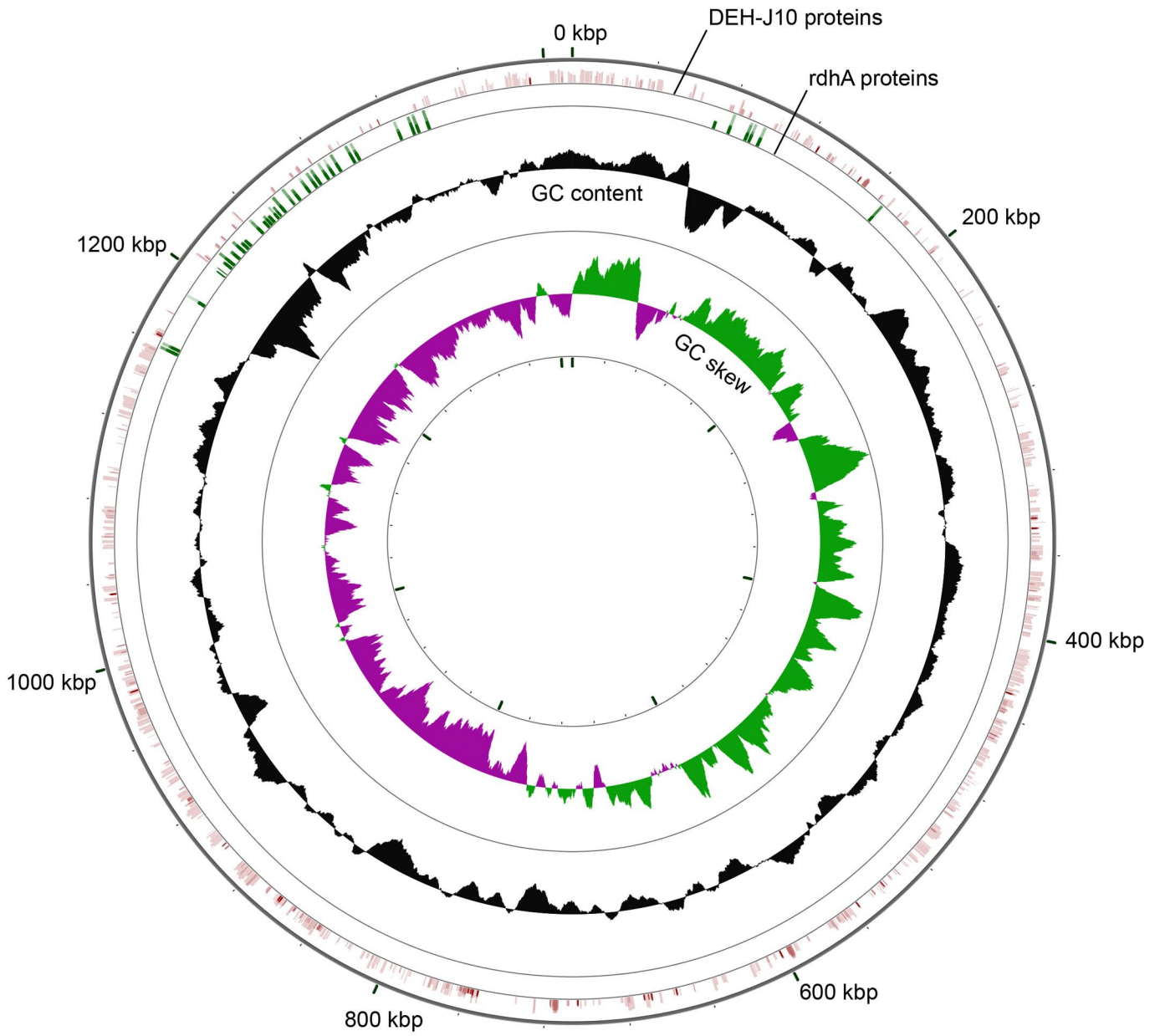
Supplementary Figure 1A. *Dehalococcoides mccartyi* strain CBDB1 compared to DEH-J10 proteins and reductive dehalogenase protein A homologs (rdhA).



Supplementary Figure 1B. *Dehalococcoides mccartyi* strain 195 compared to DEH-J10 proteins and reductive dehalogenase protein A homologs (rdhA).



Supplementary Figure 1C. *Dehalococcoides mccartyi* strain VS compared to DEH-J10 proteins and reductive dehalogenase protein A homologs (rdhA).



Supplementary Figure 1D. *Dehalogenimonas lykanthroporepellens* strain BL-DC-9 compared to DEH-J10 proteins and reductive dehalogenase protein A homologs (rdhA).

