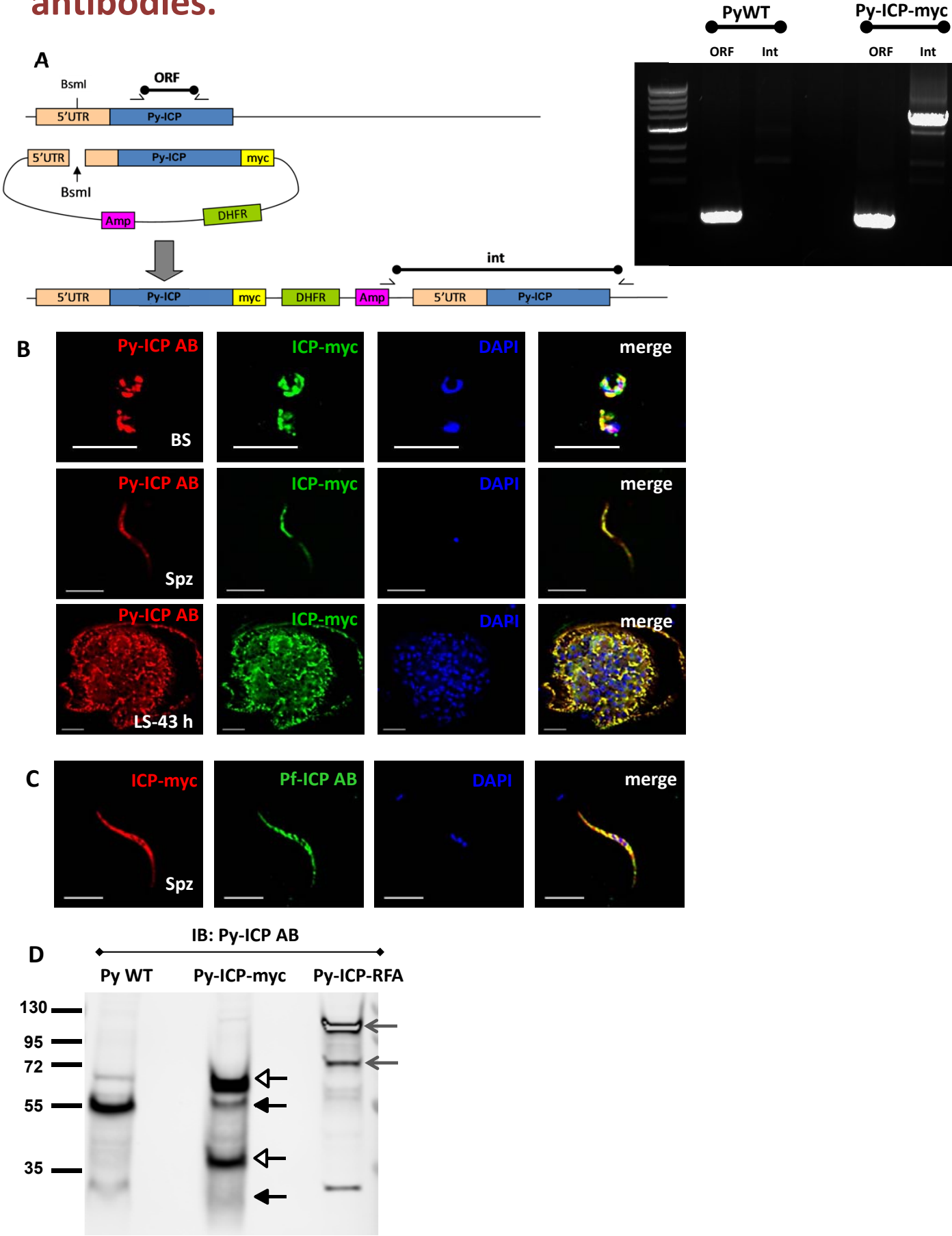
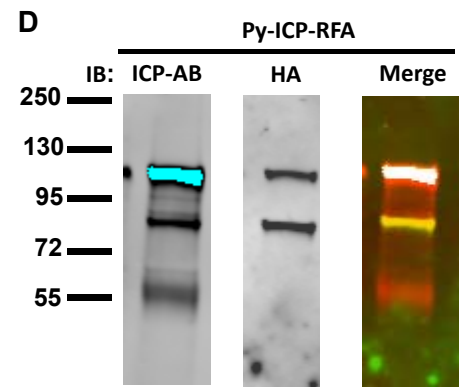
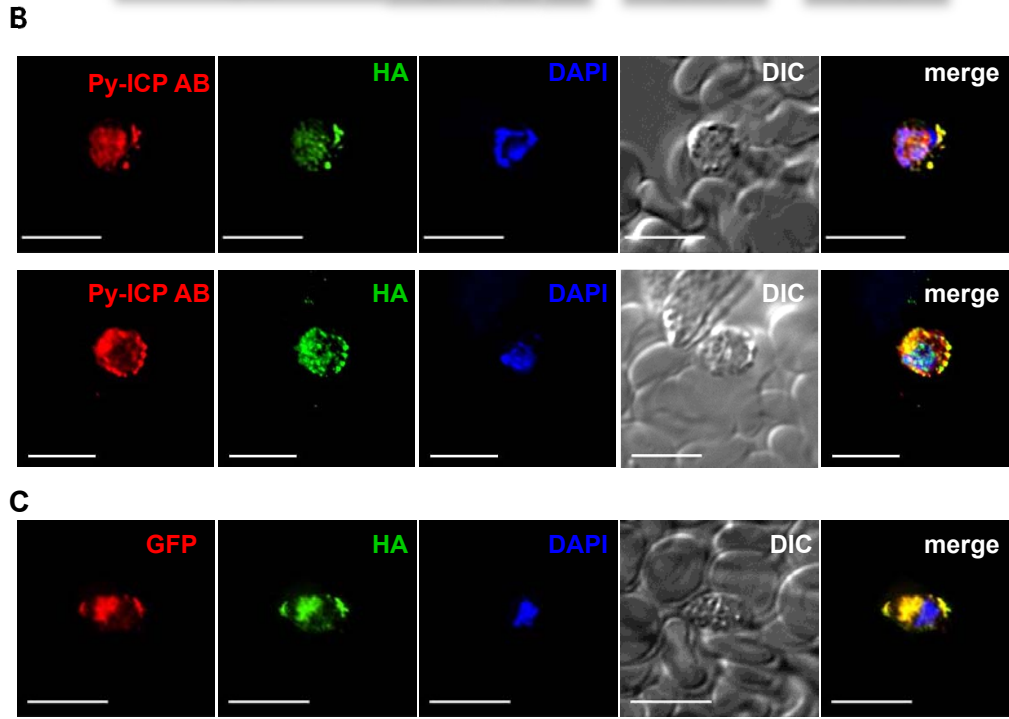
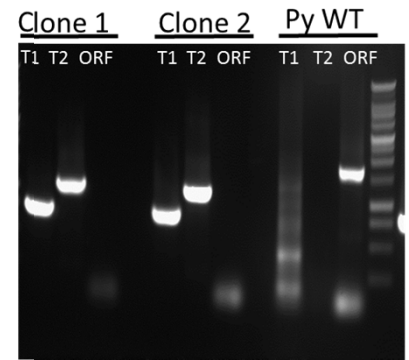
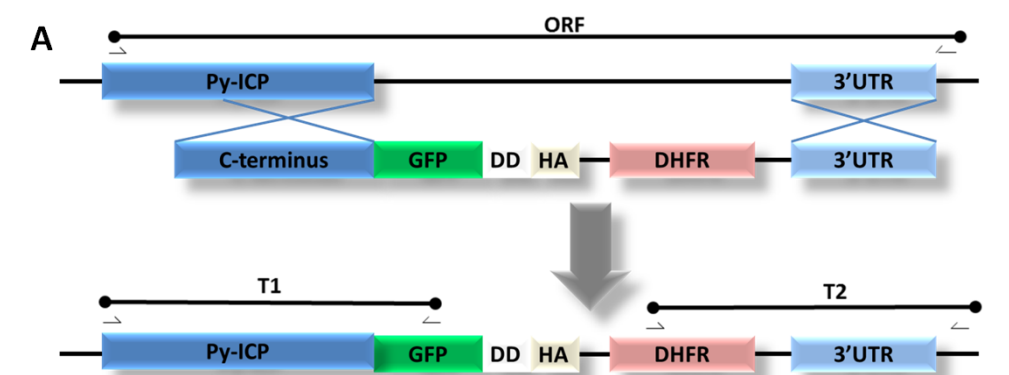


Supp. Fig S1. Generation of *P. yoelii* ICP-myc parasite line and its co-localization with *P. falciparum* and *P. yoelii* ICP antibodies.



Supp. Fig S2.

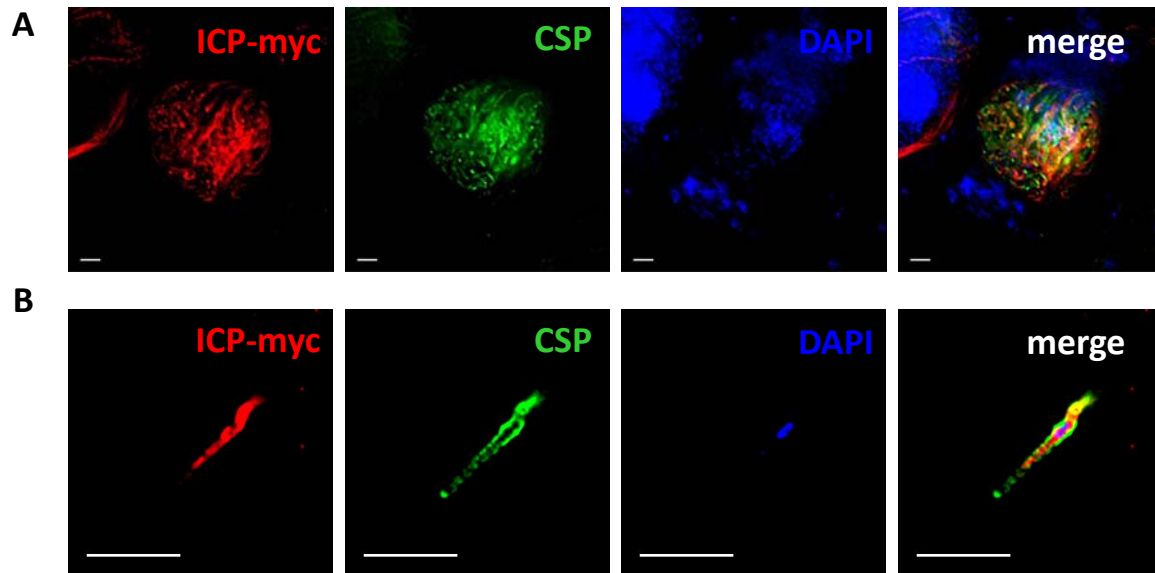


Supp. Fig S3.

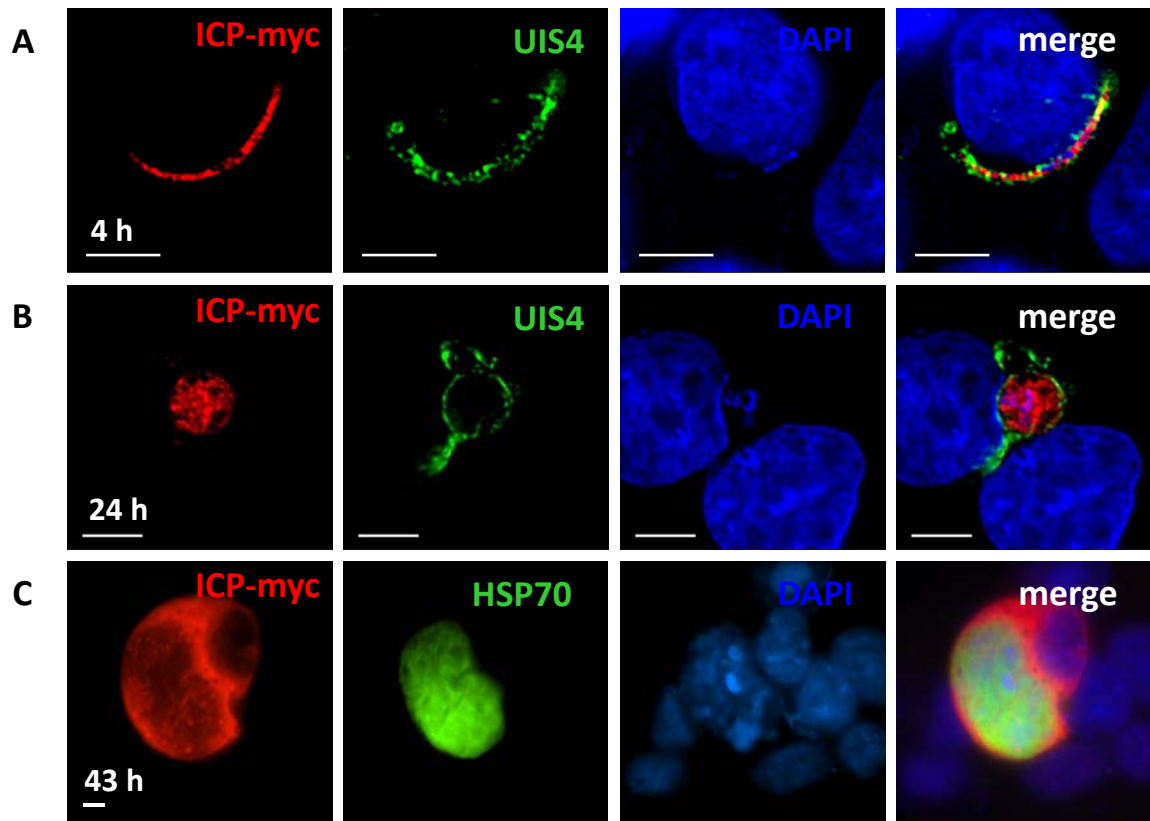
A MKSITFFVFN ICSILALLSH CEDRDLYSFD IVNETSWLKI AKKIFKGKSP SNFTIIPFNN TGSSDNEGD KEESVLLIRK KIKSNTKHGS
NIISDDSVND DISNLSLNST ASNFSDNNEE IEDNQKYPTT SYN SFNDPNS NISFNEESEF SEIDSESLE NNIK DINIK N NLEENNTMNE
IDNKVDSKYE LTGDEKCGNS LKLGNISNQT SQETINQSLS VGETFCIDFE ANAGTGYIWA LLGVHKNEPI INPENFPTKL TKKPYFSEEI
SVTQPKRYKI DEHDSSKNVD KENESQDQKE SDSKPKKPQM HLLGGPDNMR SVIKGHKAGK YYIVYSYRPF SPTSGANTK
ILYVTVQ

B MKSITFFVFN ICSILALLSH CEDRDLYSFD IVNETSWLKI AKKIFKGKSP SNFTIIPFNN TGSSDNEGD KEESVLLIRK KIKSNTKHGS
NIISDDSVND DISNLSLNST ASNFSDNNEE IEDNQKYPTT SYN SFNDPNS NISFNEESEF SEIDSESLE NNIK DINIK N NLEENNTMNE
IDNKVDSKYE LTGDEKCGNS LKLGNISNQT SQETINQSLS VGETFCIDFE ANAGTGYIWA LLGVHKNEPI INPENFPTKL TKKPYFSEEI
SVTQPKRYKI DEHDSSKNVD KENESQDQKE SDSKPKKPQM HLLGGPDNMR SVIKGHKAGK YYIVYSYRPF SPTSGANTK
ILYVTVQ

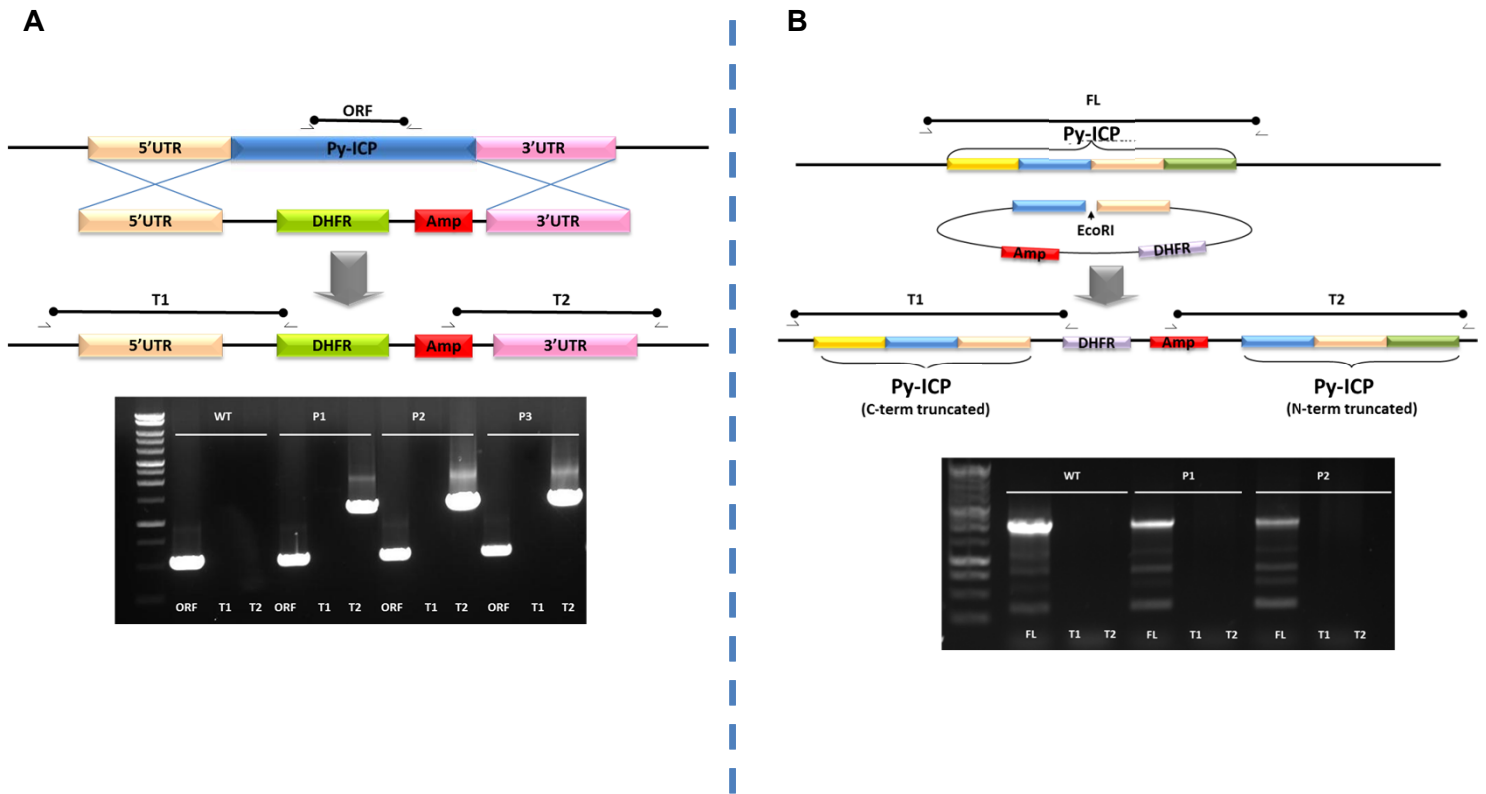
Supp. S4 Localization of Py-ICP in the midgut.



Supp. Figure S5. ICP localizes to the interior of early liver stage but is released during late liver stage *in vitro*.

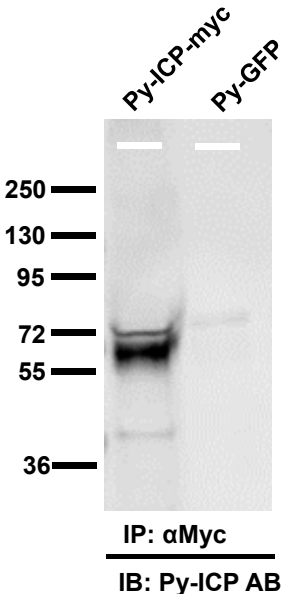


Supp. Figure S6. *P. yoelii* ICP is essential in blood stage



Supp. Figure S7. Western blot analysis on ICP pull down experiments

A



B

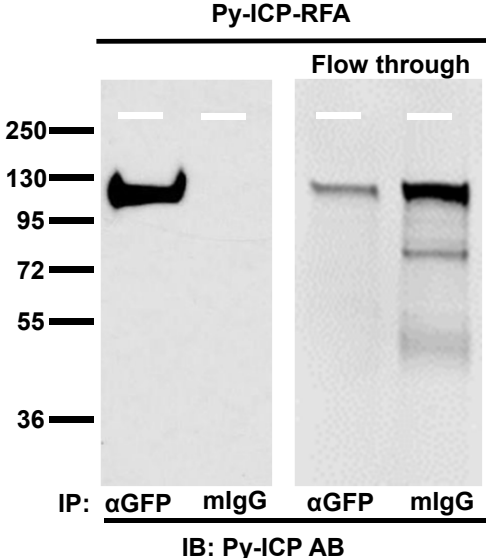


Table S1. Co-immunoprecipitation experiments.

Five independent co-immunoprecipitation experiments were performed using different parasite lines probed with different antibodies. Proteins observed in any of the four negative controls were discounted.

Pull down experiment (parasite line/antibody probe)	Negative controls (parasite line/antibody probe)
Py-ICP-myc / myc (two independent experiments)	Py GFP / myc Py WT / GFP
Py-ICP-RFA / GFP (three independent experiments)	Py-ICP-RFA / mouse IgG Py GFP / GFP
