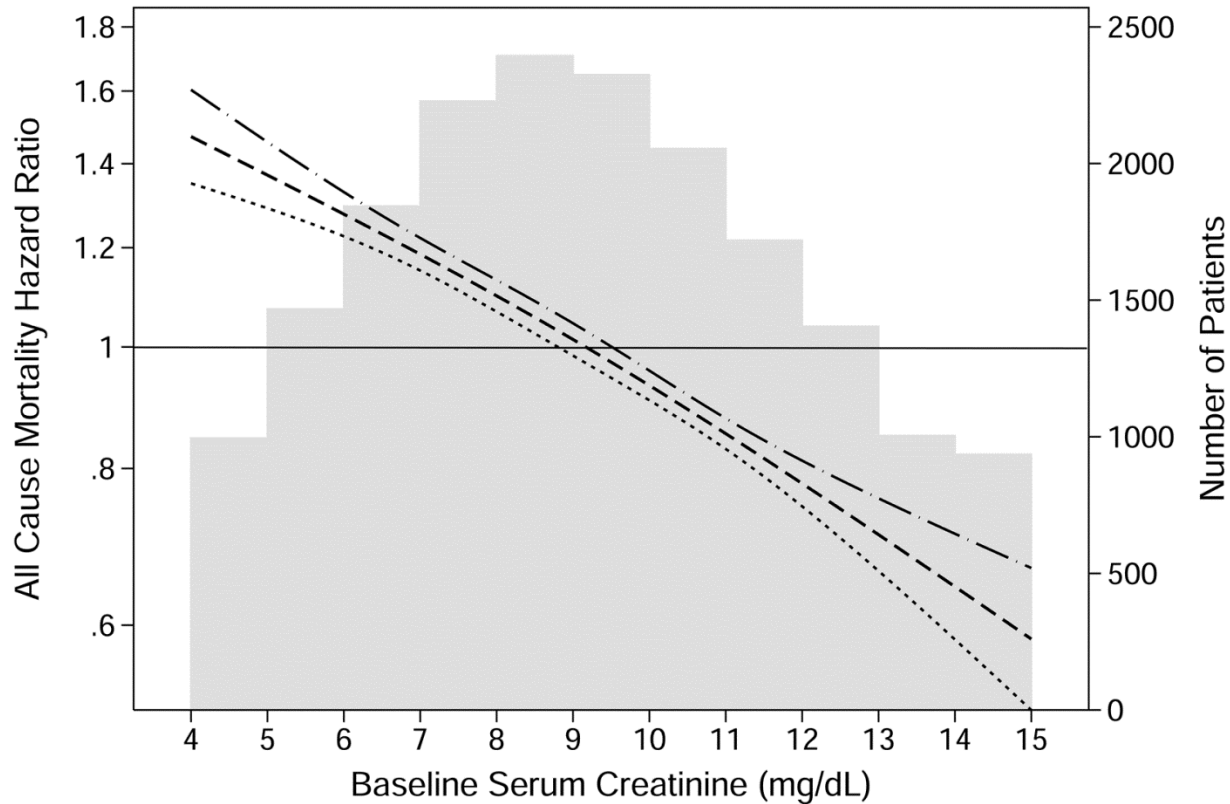


Supplemental Figure 4. Association between baseline serum creatinine level and all-cause mortality in 20,408 Korean hemodialysis patients.<sup>†</sup>



<sup>†</sup>Hazard ratios were estimated with Cox regression using restricted cubic splines. Values of <1 percentile and >99 percentile in serum creatinine levels were excluded from the model to minimize an influence from the outlier values. The model was adjusted for case-mix and nutrition covariates including age, gender, diabetes mellitus, dialysis vintage, single-pool Kt/V, hemoglobin, serum albumin and normalized protein nitrogen appearance. Dashed lines are 95% point-wise confidence bands. Number of patients is displayed simultaneously.