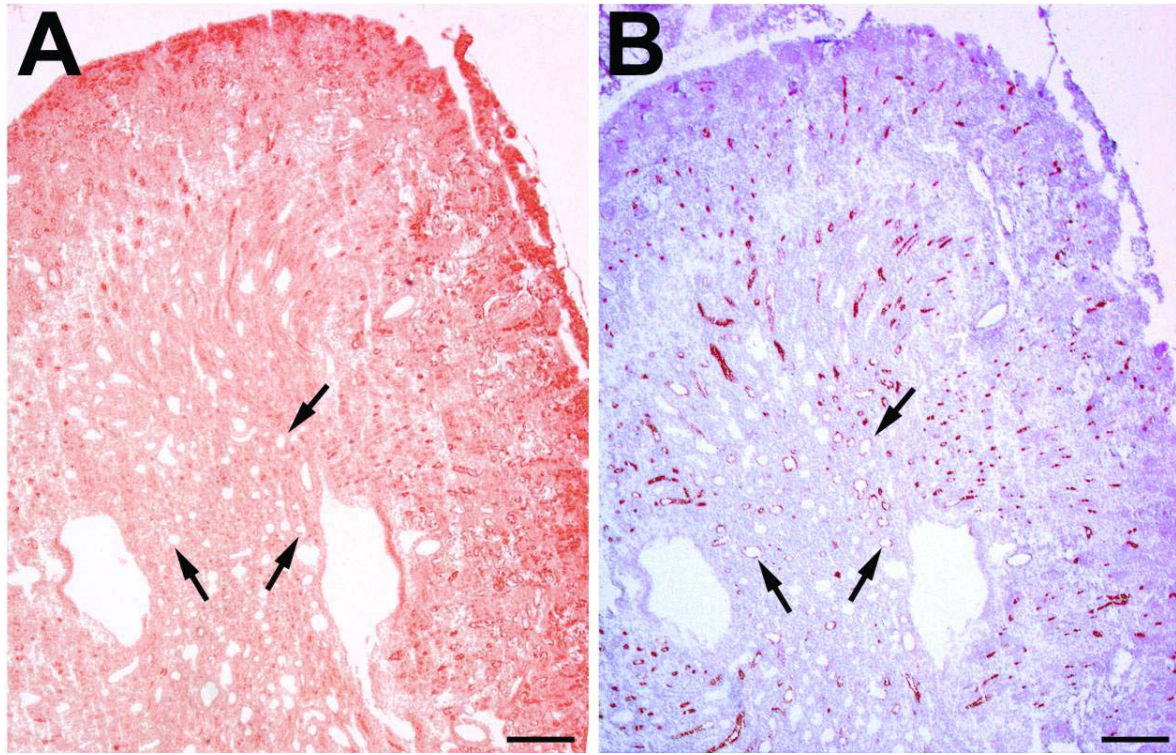


Supplementary Figure 1:



Pkd2 is downregulated in the medulla but normally expressed in the cortex in mutant mice. Immunostainings for Pkd2 (A) and Slc12a1 (B) in mutant mice at P8.

(A) Pkd2 expression is found in cortical tubular segments, whereas no staining is observed in medullary cystic cells. (B) Slc12a1 is expressed in corresponding cysts of the adjacent section (arrows in A and B). Scale bars: 400 μ m.