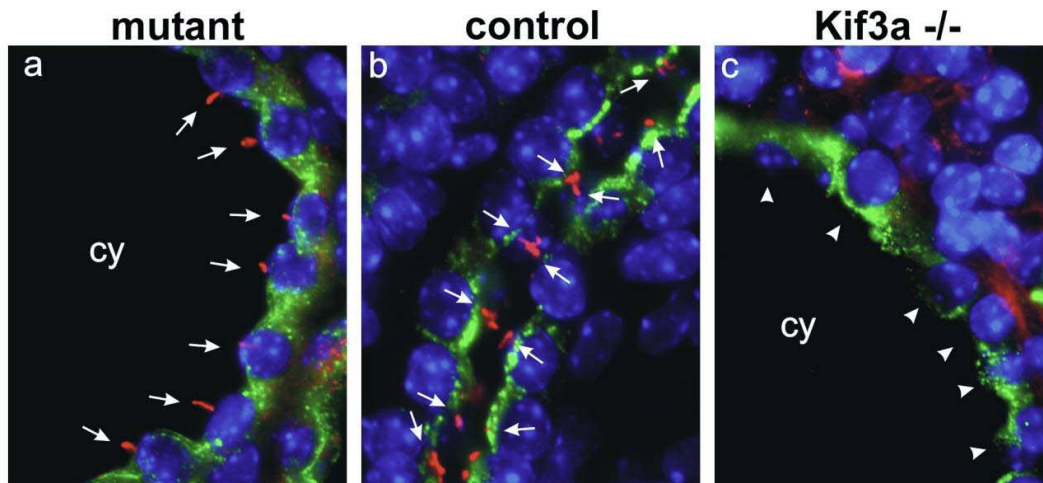


Supplementary Figure 2:



Primary cilia are present in *HNF1 β* -inactivated cystic cells. Immunofluorescence staining for primary cilia (acetylated tubulin/red), Aquaporin2 (green) and DNA (DAPI/blue) on kidney sections.

(a, b) Cilia are present in both control and mutant collecting duct cells. Morphometric analysis showed no significant difference in the ciliary length of mutant *versus* control mice. (c) As a control, no cilia were detected in *Kif3a* *-/-* polycystic kidneys (Lin *et al.*, 2003). cy: cysts.