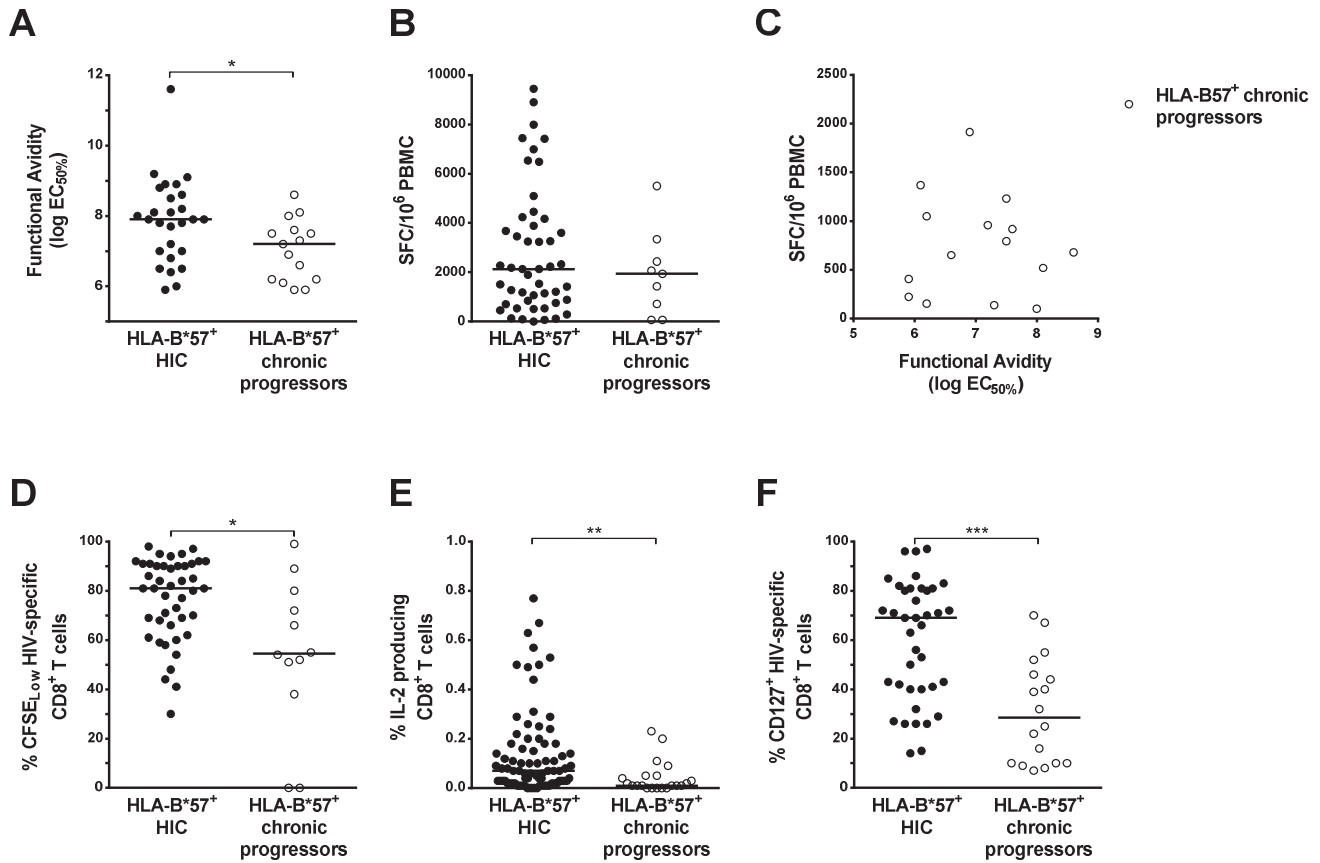


Supplemental Figure 1: Intensities and recognition frequencies of HIV-specific CD8⁺ T cells measured by ELISpot IFN- γ for HLA-B*57-restricted peptides (A) and HLA-B*57 non-restricted peptides (B) in HLA-B*57⁺ (black circles) and HLA-B*57⁻ (clear circles) subjects.



Supplemental Figure 2: Qualitative features of HIV-specific CD8⁺ T cell responses restricted by HLA-B*57 in HLA-B*57⁺ HIC (black circles) and in HLA-B*57⁺ chronic progressors (clear circles). (A) Functional avidity was determined in an IFN- γ ELISpot assay using peptide dilutions and defined as the peptide concentration required to induce 50% of the maximal response (EC_{50%}). (B) Cumulative HLA-B*57-restricted responses were measured by IFN- γ ELISpot assay and are expressed as SFC/10⁶ PBMC. (C) Functional avidity do not correlated with the frequency of HIV-specific CD8⁺ T cells measured by ELISpot IFN- γ assay in HLA-B*57⁺ chronic progressors. (D) Percentages of HIV-specific CD8⁺ T cells CFSE_{Low} after 6 days of culture with the appropriate peptide. (E) Percentages of IL-2-producing CD8⁺ T cells after 15h of HIV-specific stimulation. (F) CD127 expression of HLA-B*57- restricted HIV-specific CD8⁺ T cells.

Supplemental Table: Comparison of the qualitative features of HIV-specific CD8⁺ T cells in HLA-B*57⁺ weak and strong viral suppressors (WVS and SVS) and in HLA-B*57⁻ weak and strong viral suppressors

	HLA-B*57 ⁺ WVS	HLA-B*57 ⁺ SVS	P	HLA-B*57 ⁻ WVS	HLA-B*57 ⁻ SVS	P
Number	22	24		28	22	
Sensitivity (EC ₅₀ , M)	10-8.1 [7.7-8.8]	10 ^{-7.8} [6.8-8.8]	0.57	10-6.7 [6.5-7.0]	10-7.0 [6.4-7.7]	0.52
IFN-γ producing CD8 ⁺ T cells (%)	0.24 [0.03-0.55]	0.32 [0.11-0.55]	0.18	0.04 [0.03-0.16]	0.14 [0.01-0.51]	0.93
IL-2 producing CD8 ⁺ T cells (%)	0.03 [0.01-0.12]	0.07 [0.03-0.17]	0.15	0.02 [0.01-0.04]	0.01 [0.00-0.04]	0.23
CFSE _{low} HIV-specific CD8 ⁺ T cells (%)	84 [68-92]	80 [62-91]	0.31	19 [3-57]	16 [0-75]	0.93
CD127 ⁺ HIV-specific CD8 ⁺ T cells (%)	70 [40-82]	66 [40-80]	0.77	45 [15-64]	22 [13-43]	0.34
CD27 ⁺ CD45RO ⁺ HIV-specific CD8 ⁺ T cells (%)	65 [48-70]	48 [40-62]	0.15	51 [41-59]	42 [29-57]	0.38
CD57 ⁺ HIV-specific CD8 ⁺ T cells (%)	22 [16-30]	32 [21-48]	0.12	41 [26-61]	38 [33-66]	0.80
CD38 ⁺ HIV-specific CD8 ⁺ T cells (%)	12 [8-23]	13 [9-21]	0.85	22 [13-31]	11 [7-15]	<0.01
HLA-DR ⁺ HIV-specific CD8 ⁺ T cells (%)	34 [16-58]	53 [38-66]	0.04	37 [24-49]	50 [41-61]	0.03