

are not depicted because the local max were on cortical surface regions such that spherical ROI extraction for percent signal change would not be valid).

Fig. 4. (online supplemental material). Regions significantly associated with BDD symptom severity in the BDD group

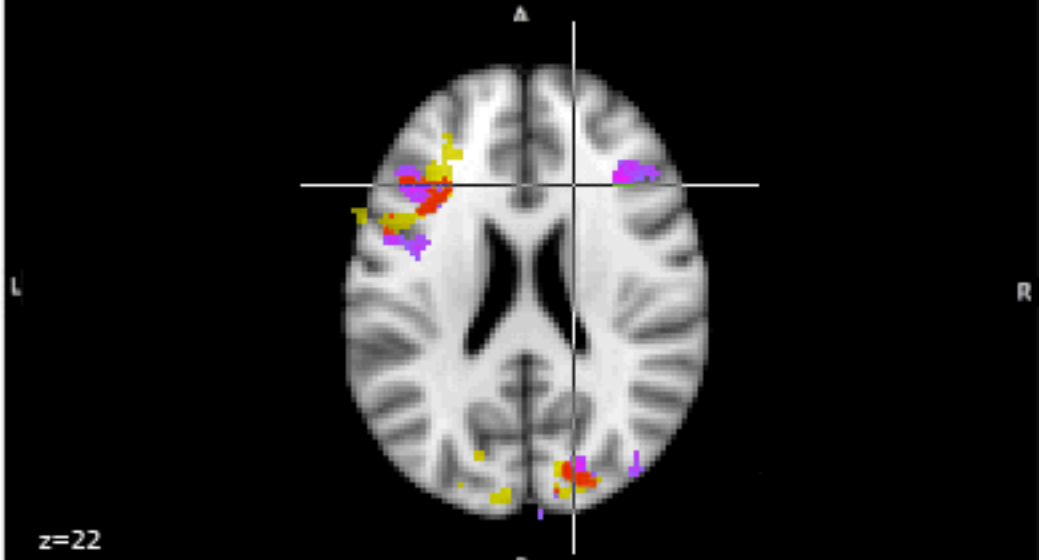
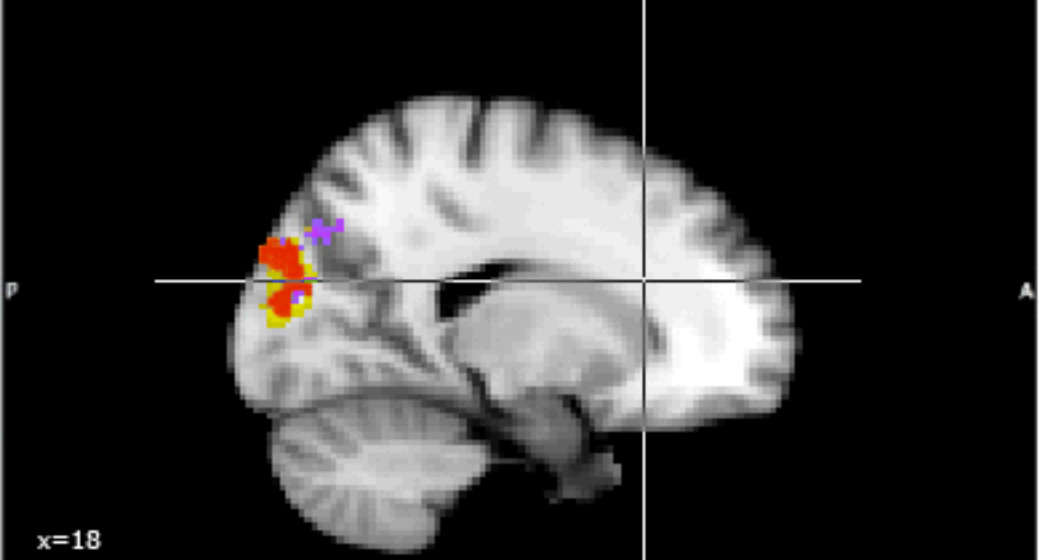
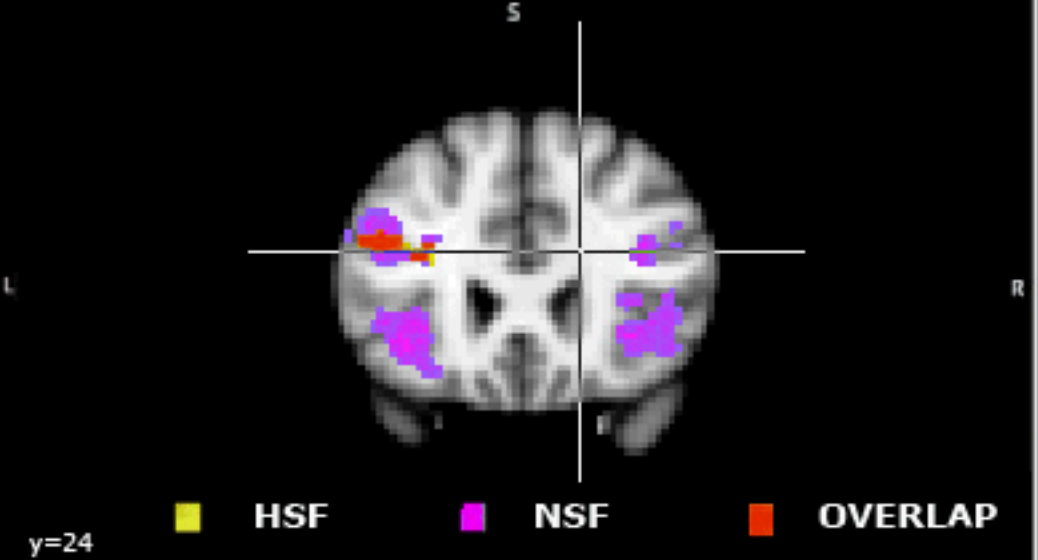
Symptom severity measured by the body dysmorphic disorder version of the Yale-Brown Obsessive Compulsive Scale (BDD-YBOCS). There were inverse relationships between symptom severity and activity for high spatial frequency (HSF) images (yellow) and normal spatial frequency (NSF) images (purple). Areas of overlap between the two image types appear in red. There were no regions positively associated with symptom severity for any image type, and no regions positively or inversely associated with symptom severity for low spatial frequency (LSF) images.

Fig. 5. (online supplemental material). Within-group deactivation for HSF houses task vs. low-level baseline rest condition. a. body dysmorphic disorder (BDD) group. b. healthy control group. HSF = high spatial frequency

Type of file: figure

Label: Figure 4

Filename: Fig.4_BDDYBOCS_covar.jpg



Type of file: table

Label: Table 3

Filename: Table_3_local_max_Houses_BDDYBOCS_final.doc

Table 3. Local maxima for regions inversely associated with BDD symptom severity

<i>NSF House vs. control stimuli</i>	Z score	x, y, z
right middle frontal gyrus	4.58	36, 28, 20
left anterior cingulate gyrus	4.26	-4, 22, 34
right lateral occipital cortex, inferior division	4.22	48, -60, -6
left precentral gyrus	3.90	-48, 4, 24
right lateral occipital cortex, superior division	3.81	18, -84, 22
right orbitofrontal cortex	3.21	46, 20, -10
<i>HSF House vs. control stimuli</i>	Z score	x, y, z
left lateral occipital cortex	4.32	-4, -86, 44
right cuneus	4.14	2, -86, 40
right occipital pole	3.68	20, -88, 6
left occipital pole	3.51	0, -98, 18
left inferior frontal gyrus	3.27	-34, 16, 20
left frontal pole	3.2	-28, 40, 26

Local maxima associated with regions inversely associated with BDD symptom severity in the BDD group, as measured by the body dysmorphic disorder version of the Yale-Brown Obsessive Compulsive Scale (BDD-YBOCS). Only local maxima from unique regions are represented. There were no regions positively associated for any image type and no regions inversely associated with BDD-YBOCS scores for LSF (low spatial frequency) images.

BDD = body dysmorphic disorder. NSF = normal spatial frequency. HSF = high-spatial frequency.