

**Characterizing the Secondary Protein Structure of Black Widow Dragline Silk
Using Solid-State NMR & X-ray Diffraction**

Janelle E. Jenkins^a, Sujatha Sampath^{a,b}, Emily Butler^a, ~~Jihyun~~ ~~ækie~~ Kim^a, Robert W. Henning^c, Gregory P. Holland^{a*}, Jeffery L. Yarger^{a*}

^a *Department of Chemistry and Biochemistry, Magnetic Resonance Research Center,
Arizona State University, Tempe, Arizona 85287-1604, USA*

^a *Department of Physics, University of Wisconsin, Milwaukee, WI 53211*

^a *Center for Advanced Radiation Sources, The University of Chicago, Chicago, IL 60637.*

*jyarger@gmail.com and greg.holland@asu.edu

Supplemental Figure

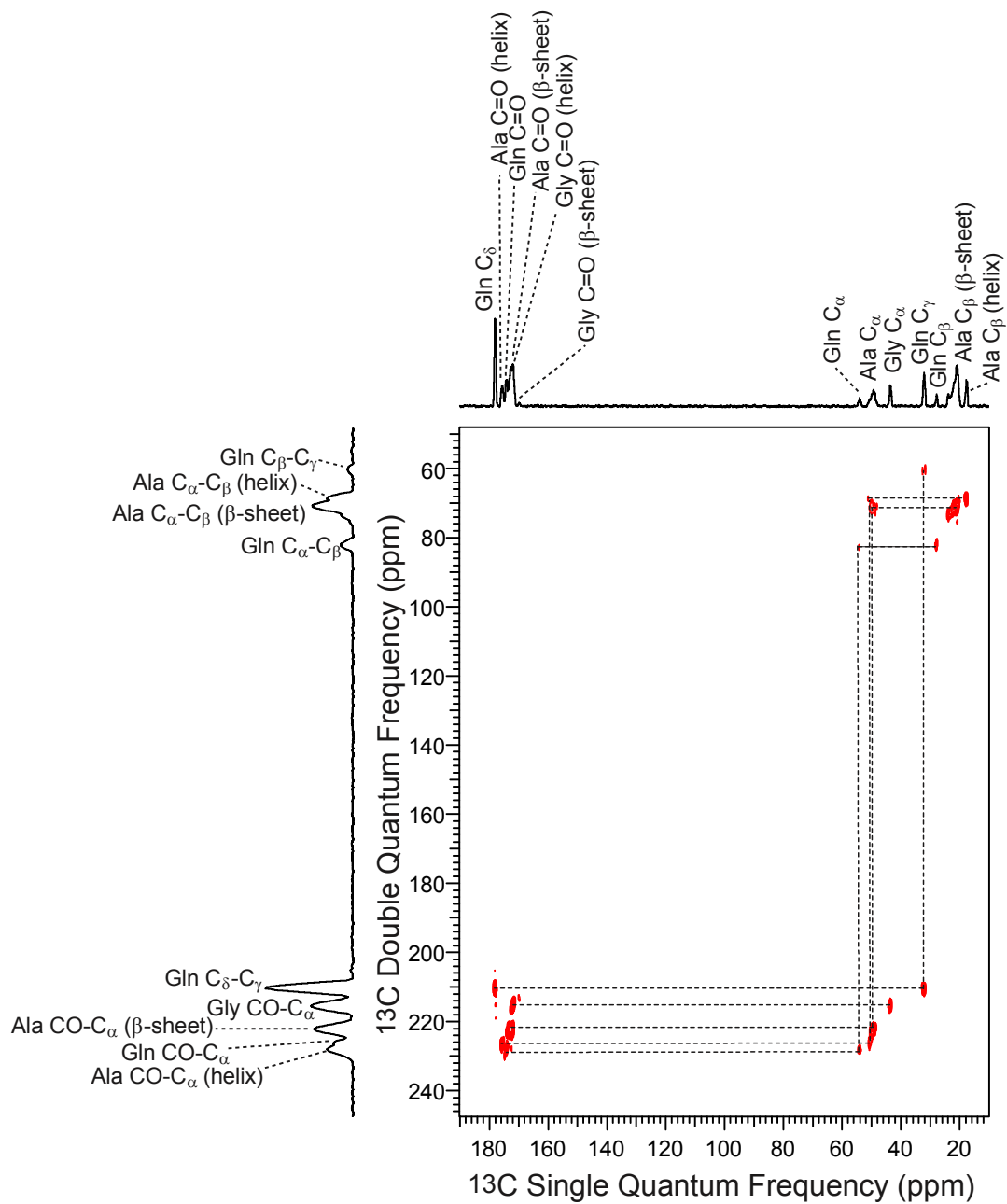


Figure S1. 2D directly polarized ^{13}C - ^{13}C through-bond DQ/SQ refocused INADEQUATE NMR spectrum of U- $^{13}\text{C}/^{15}\text{N}$ -alanine enriched *Latrodectus hesperus* major silk. Chemical shifts and linewidths were extracted from this experiment to use in fitting the U- $^{13}\text{C}/^{15}\text{N}$ -alanine enriched quantitative ^{13}C [^1H] DD-MAS data.