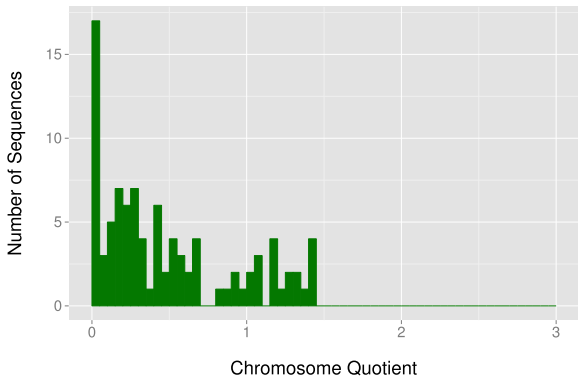


Liverpool NDL62N22 Split 1000



Supplemental Figure S2. BAC NDL62N22 is male-specific across the entire length of the BAC. BAC NDL62N22 was cut into 1,000 bp segments, and CQs were calculated for each segment. A histogram of the CQs of the 1,000 bp segments shows that the majority of the sequence have low CQs indicative of sequences from around the M-locus. Segments with higher CQs are likely repetitive sequences with similarity to other sequences elsewhere in the genome.