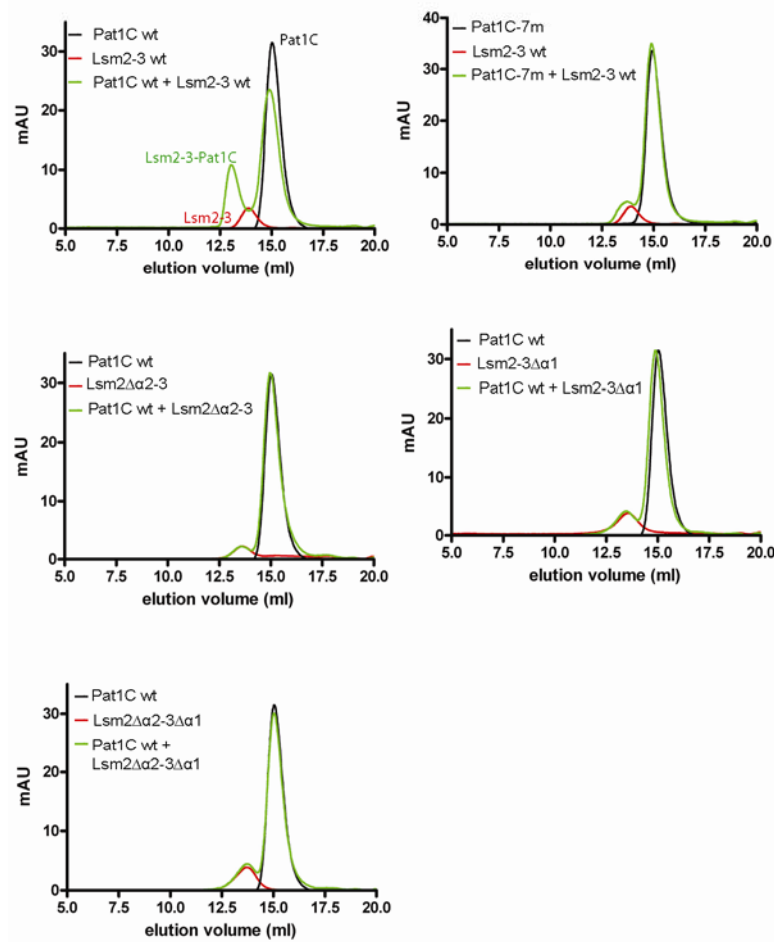


## Supplemental information, Figure S2



**Figure S2.** Analytical size exclusion chromatography was used to detect the interactions of Pat1C wild type (Pat1C wt) or Pat1C mutant (Pat1C-7m) with Lsm2-3 wild type (Lsm2-3 wt), Lsm2 $\Delta$ 2-3, Lsm2-3 $\Delta$ 1 or Lsm2 $\Delta$ 2-3 $\Delta$ 1.