

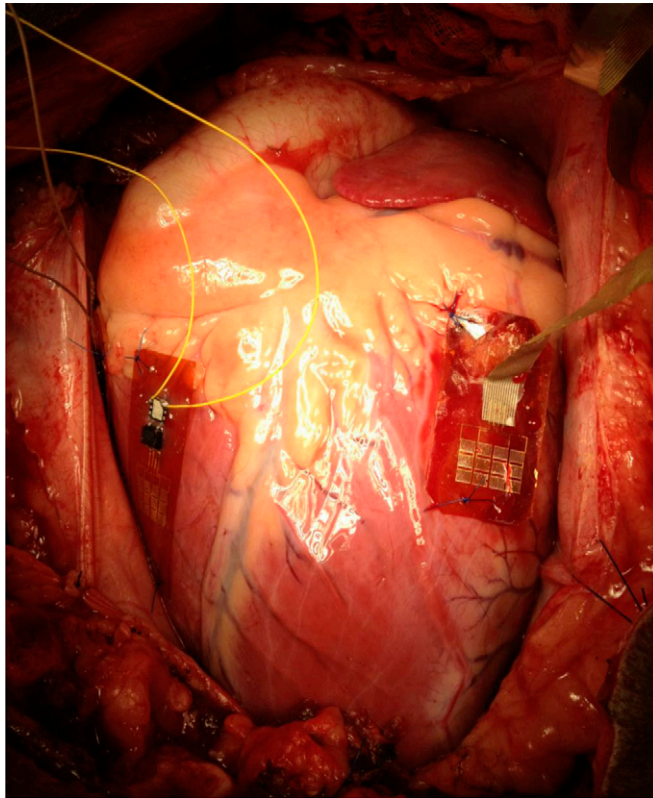
Supporting Information

Dagdeviren et al. 10.1073/pnas.1317233111



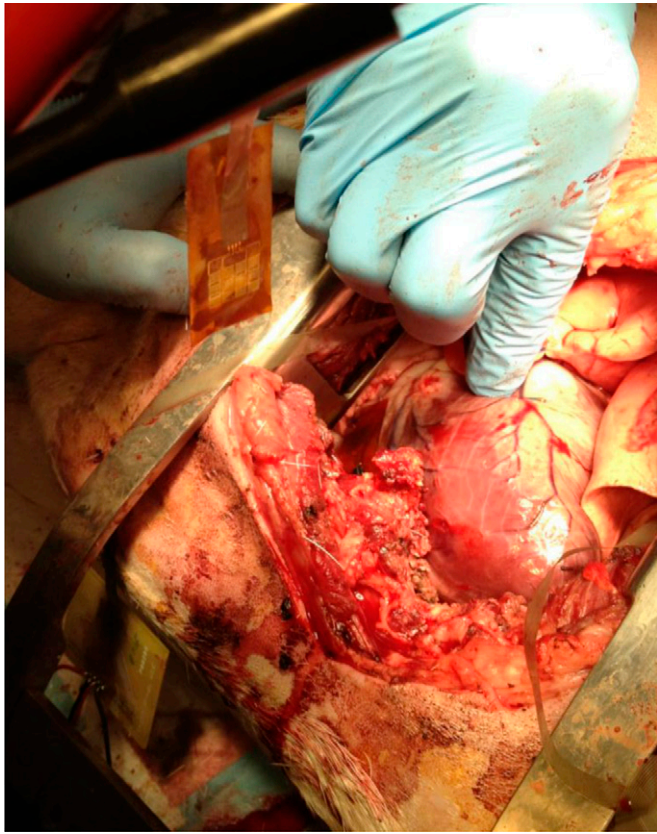
Movie S1. Affixing procedure of lead zirconate titanate (PZT) mechanical energy harvester (MEH) on epicardial sites. The anchoring scheme used sutures at three points, to maintain focal contact, though without rigid attachment so as to minimize any alteration or constraint on cardiac motion.

[Movie S1](#)



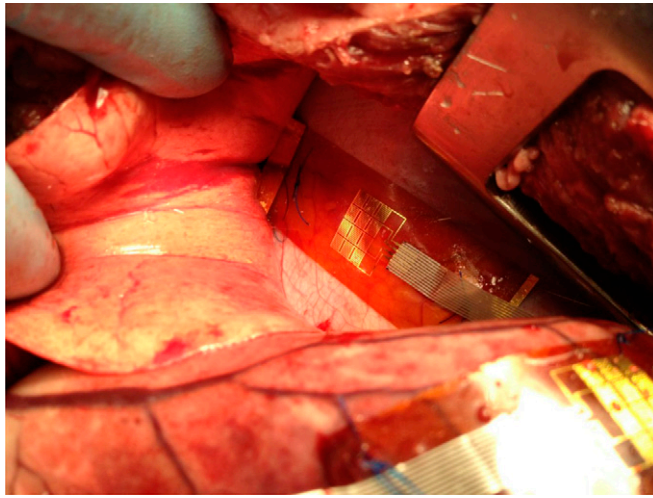
Movie S2. PZT MEH on the left and right ventricles of the bovine heart.

[Movie S2](#)



Movie S3. Increasing heart rate with a temporary pacemaker.

[Movie S3](#)



Movie S4. PZT MEH on the bovine lung.

[Movie S4](#)

Other Supporting Information Files

[SI Appendix \(PDF\)](#)