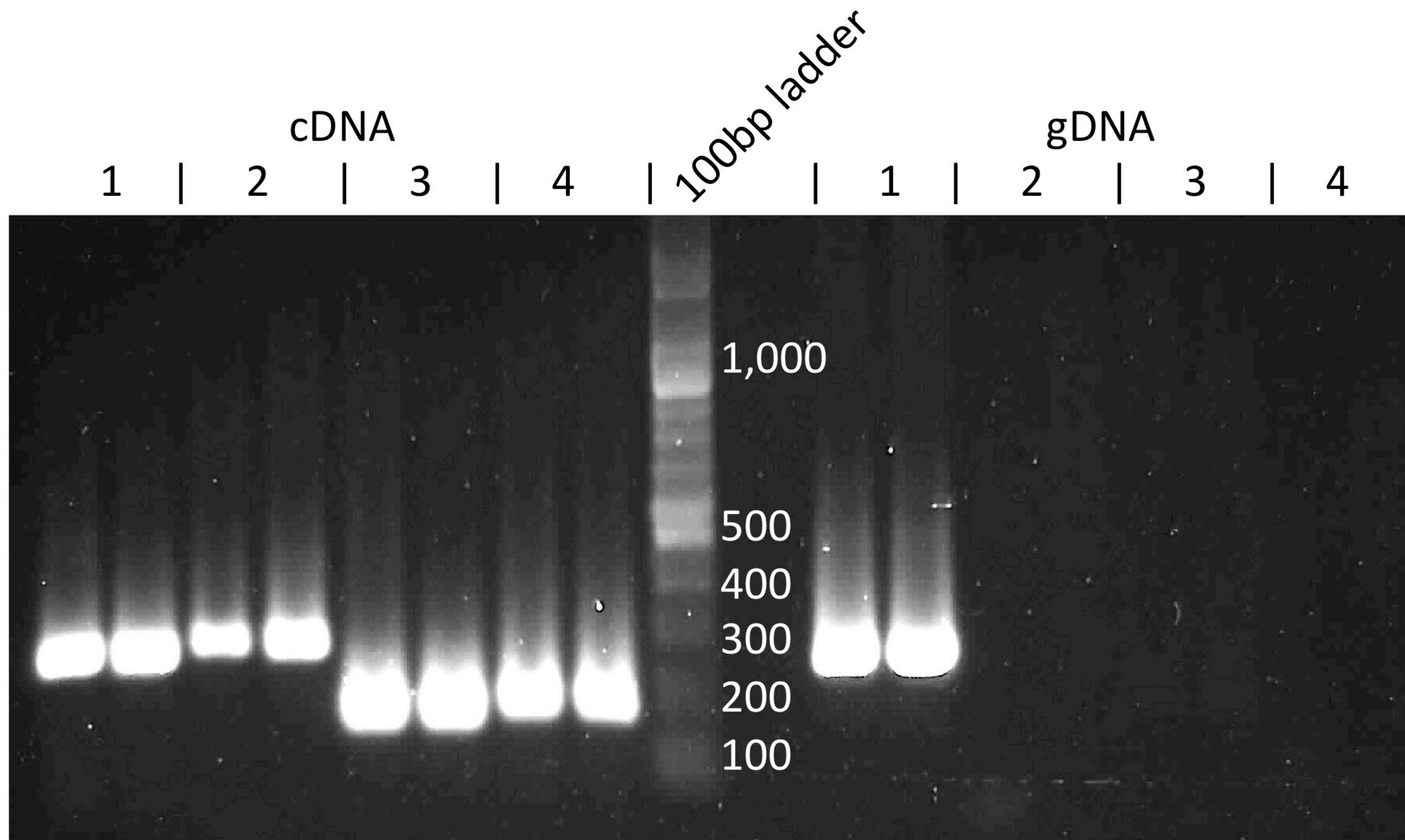


# Supplemental Figure 1: splicing primer PCR products



PCR products of splicing experiment primers using representative liver cDNA and matching gDNA templates (2 each).

Primer pairs:

1. Intron1-Forward + Exon2-Reverse
2. Intron1-Forward + Boundary2/3-Reverse
3. Boundary1/2-Forward + Exon2-Reverse
4. Boundary1/2-Forward + Boundary2/3-Reverse