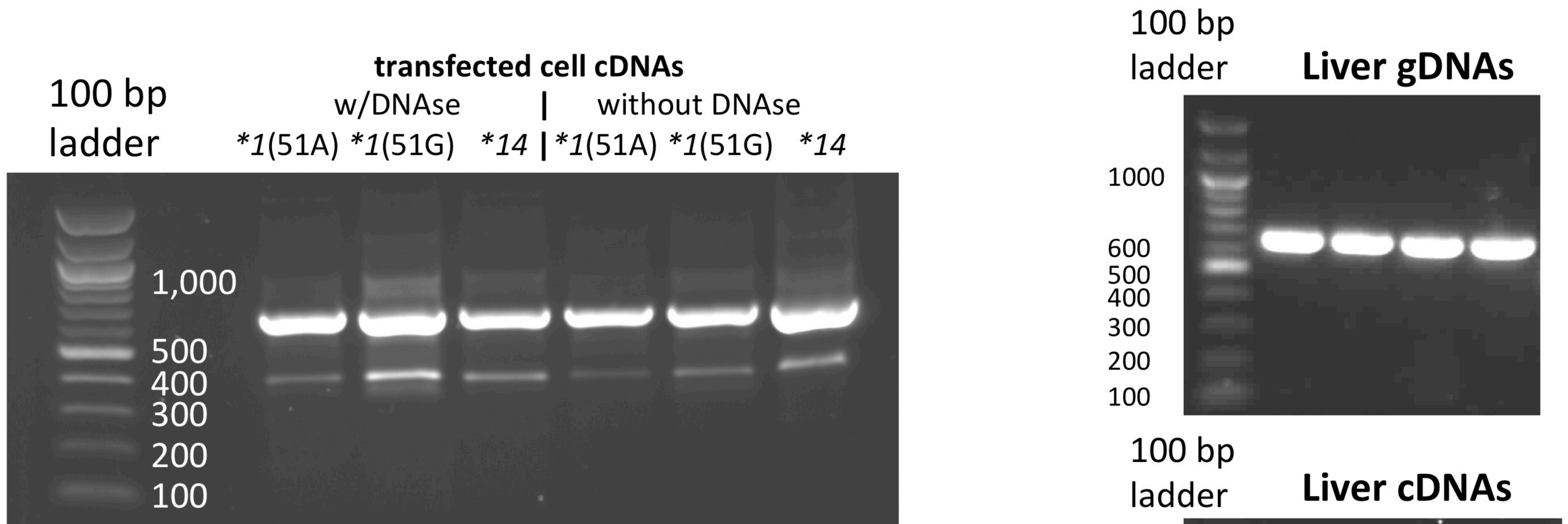


Supplemental Figure 3: Products of splicing construct primers, transfected cells and liver biopsy samples



PCR products of primers used to create splicing constructs using templates:

1. cDNAs derived from cells transfected with three different *CYP2A6* exon1-2 constructs (*1(51A), *1(51G) & *14) with and without DNase.
2. gDNAs derived from four representative liver biopsy samples.
3. cDNAs derived from four (matched) representative liver biopsy samples (with DNase).

Unspliced product = 632 bp; spliced product = 360 bp