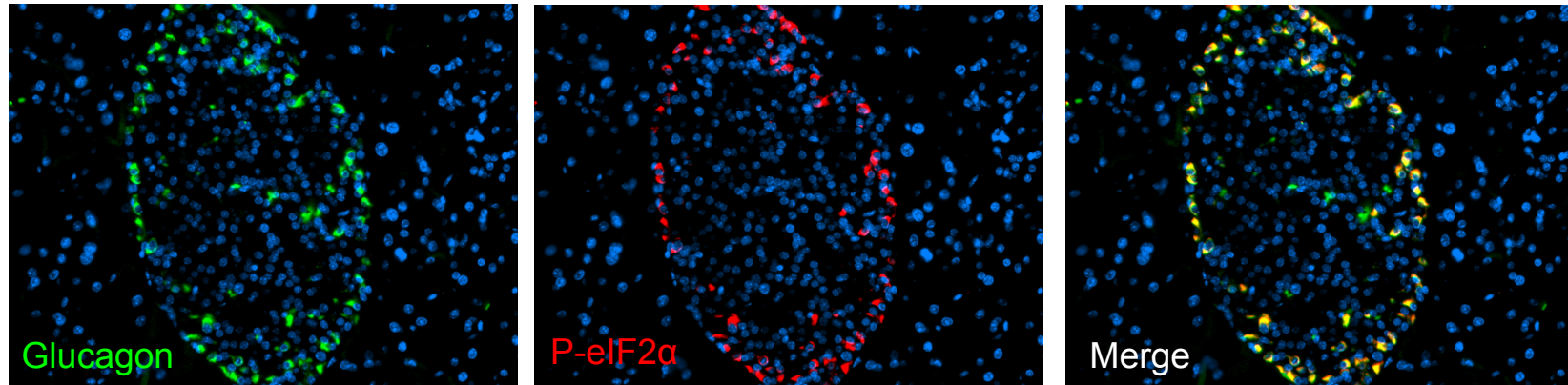


Aberrant islet unfolded protein response in type 2 diabetes

Feyza Engin¹, Truc Nguyen¹, Alena Yermalovich¹, Gökhan S. Hotamisligil^{1,2}.

¹Department of Genetics and Complex Diseases, and the ²Broad Institute of Harvard and MIT, Harvard School of Public Health, Boston, MA 02115.

Supplemental Information



Supplemental Figure 1. P-eIF2 α localizes to pancreatic α -cells in mouse islets. Pancreatic section from *ob/ob* mouse stained with glucagon (green), P-eIF2 α (red), and DAPI (blue).