

Figure S1. Identification of progenitor-specific gene sets. Genes selectively expressed in early lineage-committed progenitors of the erythroid (preCFU-E), Mk (MkP), myeloid (preGM), and lymphoid (CLP) lineages. Each value is the mean of at least three individual Affymetrix microarray-based determinations. Differentially expressed genes were manually curated to identify those with specific, high-level expression in each particular progenitor population. The underlying microarray data are listed in [Table S1](#).

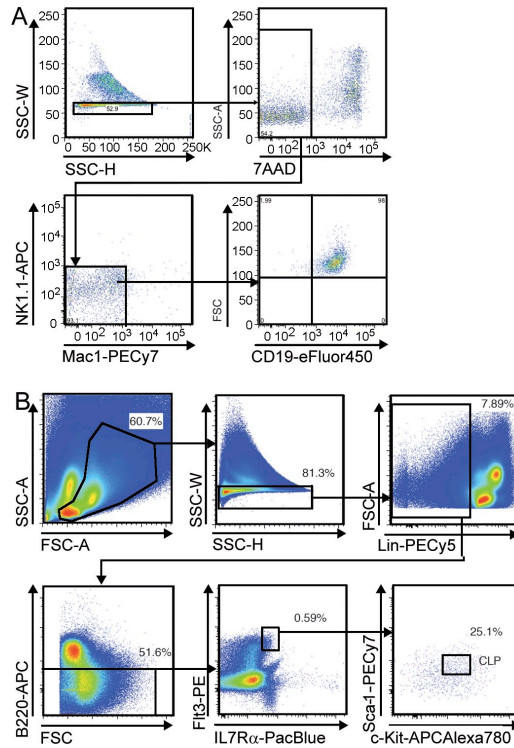


Figure S2. Gating strategy for the identification of CLPs and their B cell progeny. (A) Identification of CLP B cell progeny in OP9 single cell cultures. Cells were identified as live singlets based on scatter and 7-AAD staining, and B cells identified as Mac-1⁻NK1.1⁻CD19⁺. (B) Gating strategy for CLPs. For each gate the percentage of the gated population relative to the parental population is indicated. CLPs were defined as Lin/7AAD⁻B220⁻IL7Rα⁺Fit3⁺Sca-1^{lo}c-Kit^{lo} singlets.

Tables S1, S2, and S3 are provided as Excel files.