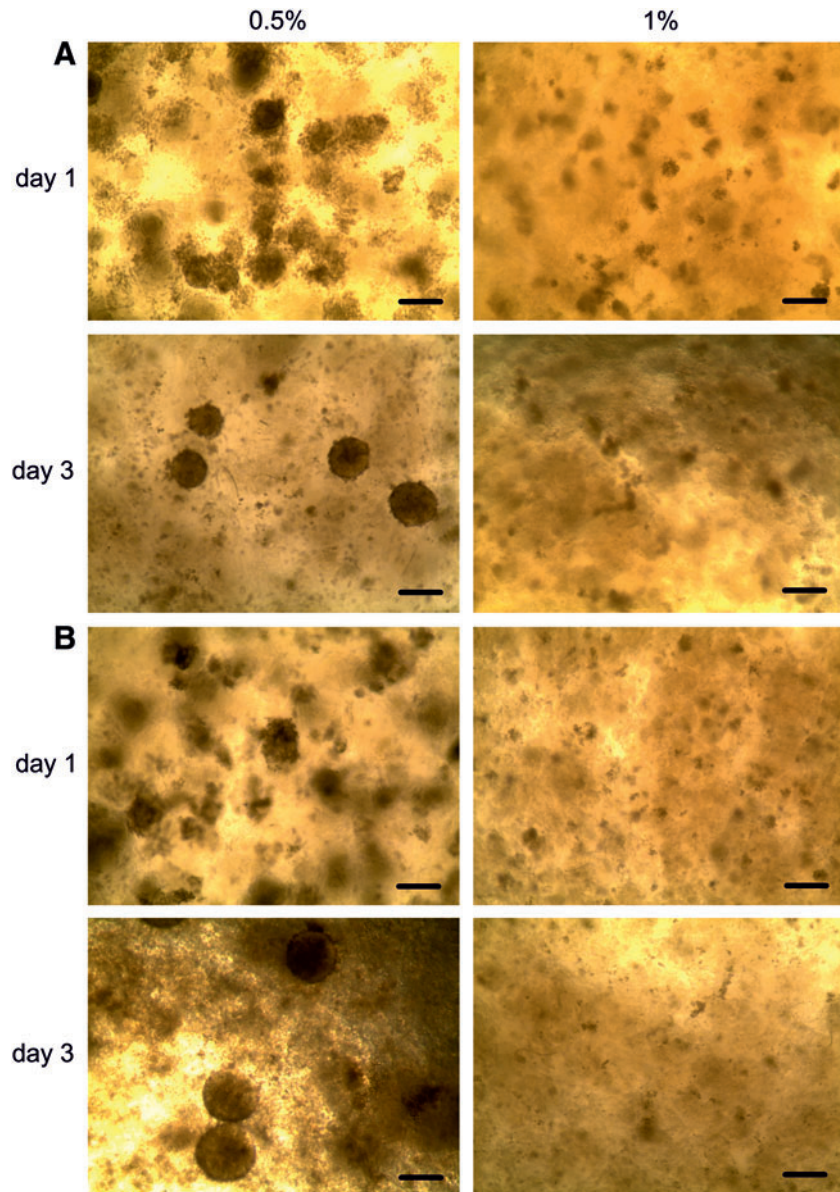


Supplementary Data



SUPPLEMENTARY FIG. S1. Human embryonic stem cells (ESCs) and induced pluripotent stem cells (iPSCs) form three-dimensional (3D) spheroids in the nanofibrillar cellulose (NFC) hydrogel. WA07 (A) and iPS(IMR90)-4 (B) cells formed 3D spheroids in 0.5 wt.% NFC but not in 1 wt.% NFC hydrogel on day 3. Scale bars, 200 μ m.