

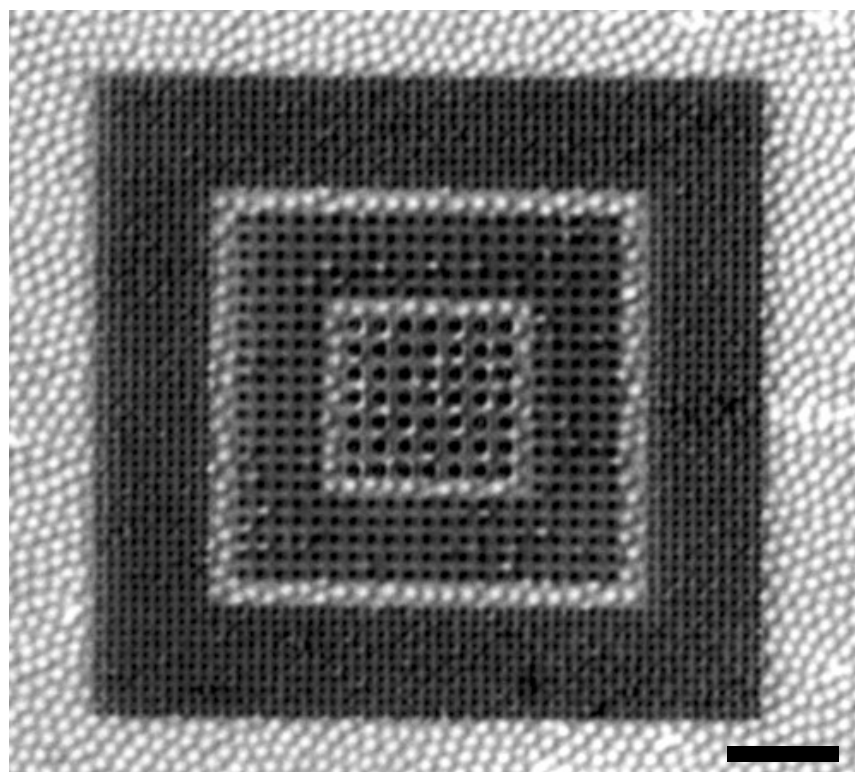
# Enhancing the Detection Limit of Nanoscale Biosensors via Topographically Selective Functionalization

*Mark A. Lifson,<sup>§,‡</sup> Dhrubajyoti Basu Roy,<sup>‡</sup> Benjamin L. Miller<sup>\*,§,‡,#</sup>*

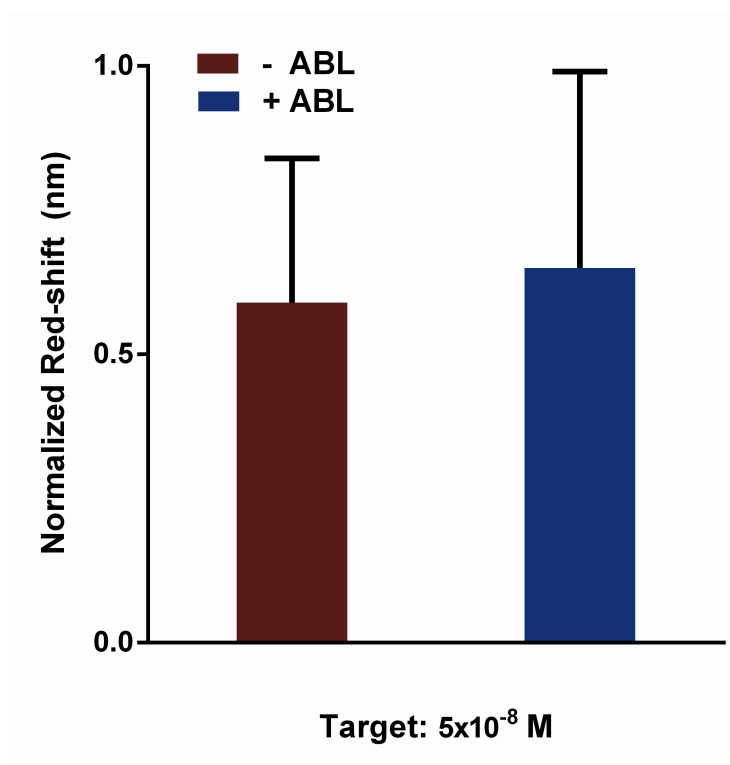
<sup>§</sup>Department of Biomedical Engineering, <sup>‡</sup>Department of Biochemistry and Biophysics and

<sup>#</sup>Department of Dermatology, University of Rochester, Rochester, New York 14627

Supplementary Information



**Figure S1:** Optical brightfield image (ambient humidity) of 668 nm polymer nanoparticles assembled around features of various sizes (750, 550, and 350 nm) on silicon. Scale bar = 5  $\mu\text{m}$ .



**Figure S2:** Comparison of ABL and non-ABL response following exposure to 50 nM target.