

Supplemental Materials

Molecular Biology of the Cell

De Bellis et al.

Supplementary Figure 1: Localization of the C-terminal motif of AQP4-Δ4

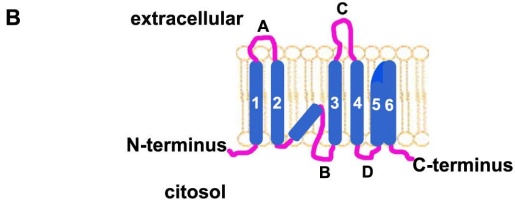
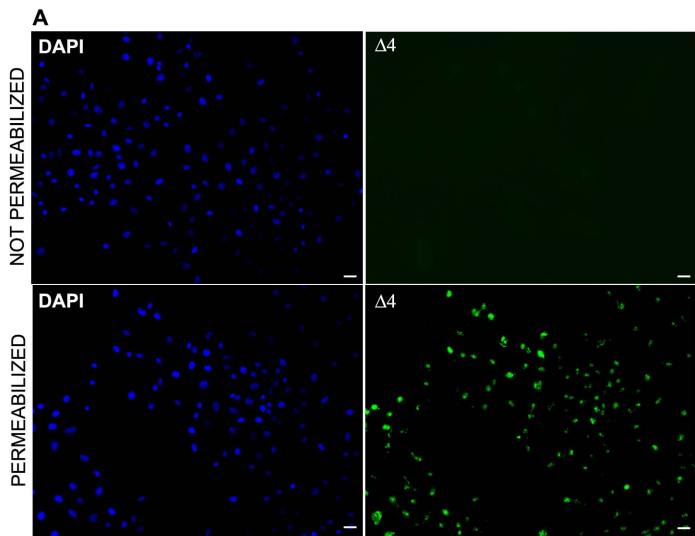
(A) Immunofluorescence experiment performed on HeLa cells transiently transfected with AQP4-Δ4 (Δ4), and permeabilized or not with Triton-X100 0.3 % for 10 min. AQP4-Δ4 was detected with a commercial antibody that recognized the C-terminal sequence of AQP4. (B) Model of transmembrane topology of AQP4- Δ4 showing relative orientation of N- and C-terminus, transmembrane segments (indicated with numbers) and loops (indicated with capital letters)

Supplementary Figure 2 movie: Confocal microscopy analysis of AQP4-Δ4.

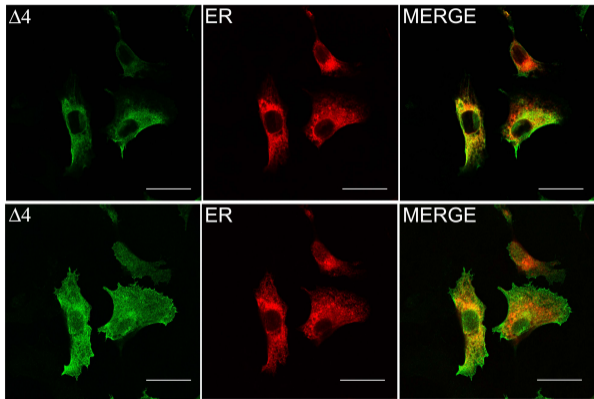
Movie showing all the different confocal planes and co-localization degree of AQP4- Δ4 (green) with ER marker (red) in transfected HeLa cells.

Supplementary Figure 3: AQP4-Δ4 protein cellular localization

Two different confocal planes, ER plane (top panel) and plasma membrane plane (bottom panel), of a single z-stack showing localization of AQP4-Δ4 (Δ4, green) in transfected HeLa cells using the ER subcellular markers (red). Note that a weak AQP4-Δ4 signal is observed at the periphery of the cells, likely at the plasma membrane. Scale bar 15 μm.



Supplementary figure 1



Supplementary Figure 3