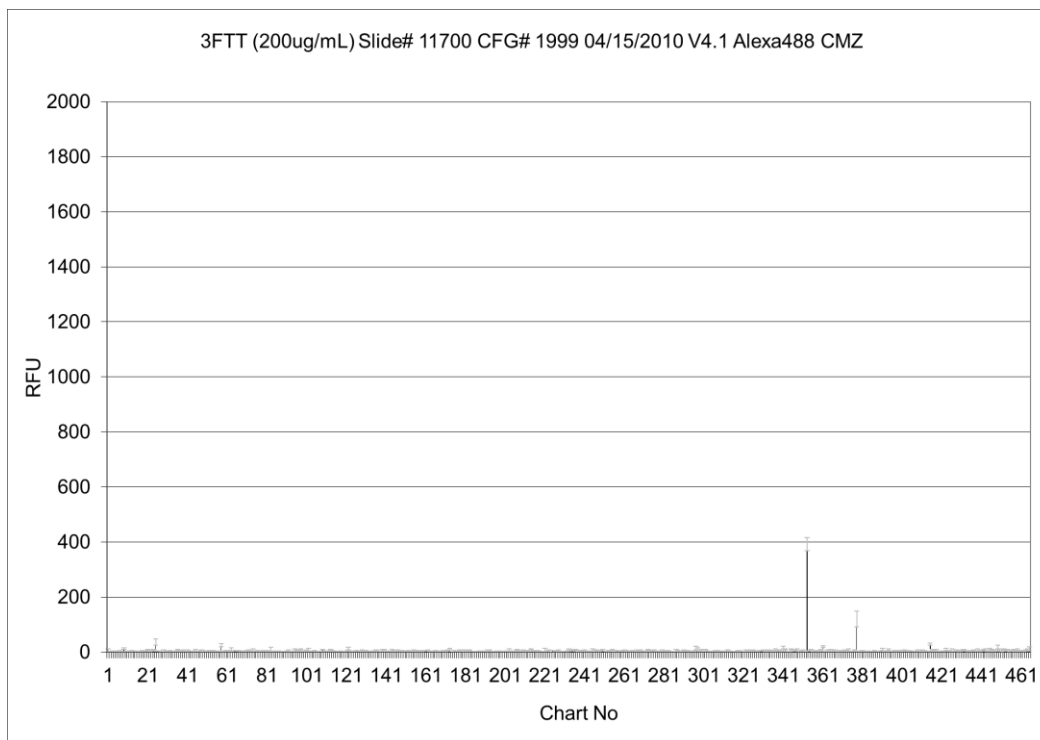
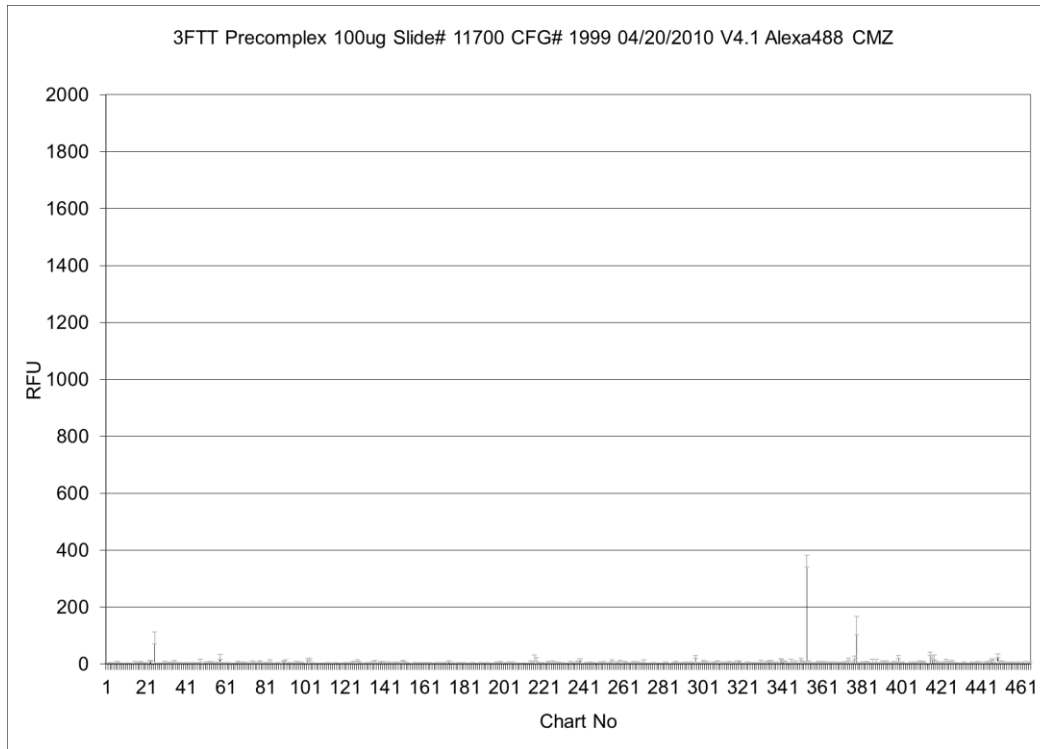
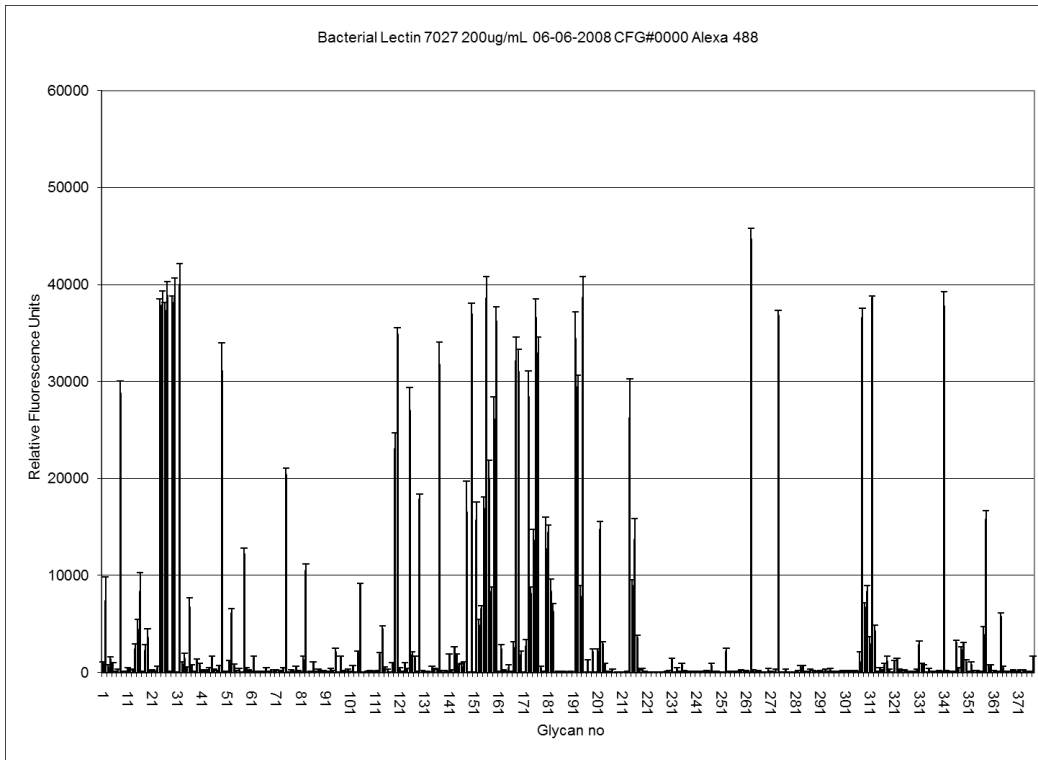


# Supplementary Figure 1

## Binding of SACOL2570 to glycan array:

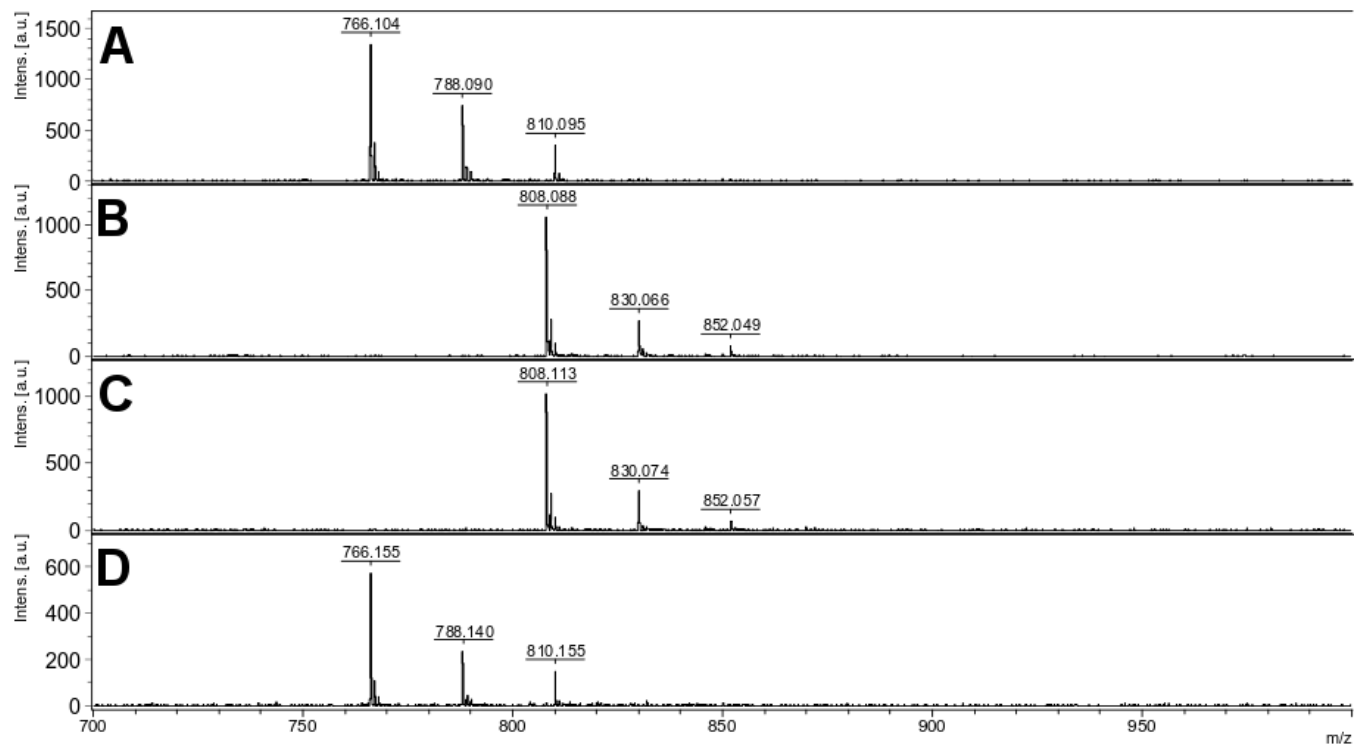


### Example of a strong binder:



**Supplementary Figure 1** Fluorescence reading from glycoarray of 465 glycans for SACOL2570 (top and middle panels), and bacterial lectin as a positive control (bottom panel). No binding was detected for a tested pool of potential substrate compounds.

Supplementary Figure 2.



**Supplementary Figure 2** SACOL2570 catalyzes the hydrolysis of AcCoA to CoA in solution.

(A) MALDI-MS spectra of AcCoA incubated with SACOL2570, (B) AcCoA incubated in the absence of SACOL2570, (C) AcCoA alone, and (D) CoA alone.

Supplementary Table 1.

Chart Number	Glycan Structure
1	Gal $\alpha$ -Sp8
2	Glc $\alpha$ -Sp8
3	Man $\alpha$ -Sp8
4	GalNAc $\alpha$ -Sp8
5	GalNAc $\alpha$ -Sp15
6	Fuc $\alpha$ -Sp8
7	Fuc $\alpha$ -Sp9
8	Rha $\alpha$ -Sp8
9	Neu5Ac $\alpha$ -Sp8
10	Neu5Ac $\alpha$ -Sp11
11	Neu5Ac $\beta$ -Sp8
12	Gal $\beta$ -Sp8
13	Glc $\beta$ -Sp8
14	Man $\beta$ -Sp8
15	GalNAc $\beta$ -Sp8
16	GlcNAc $\beta$ -Sp0
17	GlcNAc $\beta$ -Sp8
18	GlcN(Gc) $\beta$ -Sp8
19	Gal $\beta$ 1-4GlcNAc $\beta$ 1-3(Gal $\beta$ 1-4GlcNAc $\beta$ 1-6)GalNAc $\alpha$ -Sp8
20	GlcNAc $\beta$ 1-3(GlcNAc $\beta$ 1-4)(GlcNAc $\beta$ 1-6)GlcNAc-Sp8
21	[3OSO3][6OSO3]Gal $\beta$ 1-4[6OSO3]GlcNAc $\beta$ -Sp0
22	[3OSO3][6OSO3]Gal $\beta$ 1-4GlcNAc $\beta$ -Sp0
23	[3OSO3]Gal $\beta$ 1-4(Fuc $\alpha$ 1-3)[6OSO3]Glc-Sp0
24	[3OSO3]Gal $\beta$ 1-4Glc $\beta$ -Sp8
25	[3OSO3]Gal $\beta$ 1-4[6OSO3]Glc $\beta$ -Sp0
26	[3OSO3]Gal $\beta$ 1-4[6OSO3]Glc $\beta$ -Sp8
27	[3OSO3]Gal $\beta$ 1-3(Fuc $\alpha$ 1-4)GlcNAc $\beta$ -Sp8
28	[3OSO3]Gal $\beta$ 1-3GalNAc $\alpha$ -Sp8
29	[3OSO3]Gal $\beta$ 1-3GlcNAc $\beta$ -Sp0
30	[3OSO3]Gal $\beta$ 1-3GlcNAc $\beta$ -Sp8
31	[3OSO3]Gal $\beta$ 1-4(Fuc $\alpha$ 1-3)GlcNAc-Sp0
32	[3OSO3]Gal $\beta$ 1-4(Fuc $\alpha$ 1-3)GlcNAc $\beta$ -Sp8
33	[3OSO3]Gal $\beta$ 1-4[6OSO3]GlcNAc $\beta$ -Sp0
34	[3OSO3]Gal $\beta$ 1-4[6OSO3]GlcNAc $\beta$ -Sp8
35	[3OSO3]Gal $\beta$ 1-4GlcNAc $\beta$ -Sp0
36	[3OSO3]Gal $\beta$ 1-4GlcNAc $\beta$ -Sp8
37	[3OSO3]Gal $\beta$ -Sp8
38	[4OSO3][6OSO3]Gal $\beta$ 1-4GlcNAc $\beta$ -Sp0
39	[4OSO3]Gal $\beta$ 1-4GlcNAc $\beta$ -Sp8
40	6-H <sub>2</sub> PO <sub>3</sub> Man $\alpha$ -Sp8
41	[6OSO3]Gal $\beta$ 1-4Glc $\beta$ -Sp0
42	[6OSO3]Gal $\beta$ 1-4Glc $\beta$ -Sp8
43	[6OSO3]Gal $\beta$ 1-4GlcNAc $\beta$ -Sp8
44	[6OSO3]Gal $\beta$ 1-4[6OSO3]Glc $\beta$ -Sp8

45	Neu5Ac $\alpha$ 2-3[6OSO <sub>3</sub> ]Gal $\beta$ 1-4GlcNAc $\beta$ -Sp8
46	[6OSO <sub>3</sub> ]GlcNAc $\beta$ -Sp8
47	[9NAc]Neu5Ac $\alpha$ -Sp8
48	[9NAc]Neu5Ac $\alpha$ 2-6Gal $\beta$ 1-4GlcNAc $\beta$ -Sp8
49	Man $\alpha$ 1-3(Man $\alpha$ 1-6)Man $\beta$ 1-4GlcNAc $\beta$ 1-4GlcNAc $\beta$ -Sp12
50	Man $\alpha$ 1-3(Man $\alpha$ 1-6)Man $\beta$ 1-4GlcNAc $\beta$ 1-4GlcNAc $\beta$ -Sp13
51	GlcNAc $\beta$ 1-2Man $\alpha$ 1-3(GlcNAc $\beta$ 1-2Man $\alpha$ 1-6)Man $\beta$ 1-4GlcNAc $\beta$ 1-4GlcNAc $\beta$ -Sp12
52	GlcNAc $\beta$ 1-2Man $\alpha$ 1-3(GlcNAc $\beta$ 1-2Man $\alpha$ 1-6)Man $\beta$ 1-4GlcNAc $\beta$ 1-4GlcNAc $\beta$ -Sp13
53	Gal $\beta$ 1-4GlcNAc $\beta$ 1-2Man $\alpha$ 1-3(Gal $\beta$ 1-4GlcNAc $\beta$ 1-2Man $\alpha$ 1-6)Man $\beta$ 1-4GlcNAc $\beta$ 1-4GlcNAc $\beta$ -Sp12
54	Neu5Ac $\alpha$ 2-6Gal $\beta$ 1-4GlcNAc $\beta$ 1-2Man $\alpha$ 1-3(Neu5Ac $\alpha$ 2-6Gal $\beta$ 1-4GlcNAc $\beta$ 1-2Man $\alpha$ 1-6)Man $\beta$ 1-4GlcNAc $\beta$ 1-4GlcNAc $\beta$ -N(LT)AVL
55	Neu5Ac $\alpha$ 2-6Gal $\beta$ 1-4GlcNAc $\beta$ 1-2Man $\alpha$ 1-3(Neu5Ac $\alpha$ 2-6Gal $\beta$ 1-4GlcNAc $\beta$ 1-2Man $\alpha$ 1-6)Man $\beta$ 1-4GlcNAc $\beta$ 1-4GlcNAc $\beta$ -Sp8
56	Neu5Ac $\alpha$ 2-6Gal $\beta$ 1-4GlcNAc $\beta$ 1-2Man $\alpha$ 1-3(Neu5Ac $\alpha$ 2-6Gal $\beta$ 1-4GlcNAc $\beta$ 1-2Man $\alpha$ 1-6)Man $\beta$ 1-4GlcNAc $\beta$ 1-4GlcNAc $\beta$ -Sp12
57	Neu5Ac $\alpha$ 2-6Gal $\beta$ 1-4GlcNAc $\beta$ 1-2Man $\alpha$ 1-3(Neu5Ac $\alpha$ 2-6Gal $\beta$ 1-4GlcNAc $\beta$ 1-2Man $\alpha$ 1-6)Man $\beta$ 1-4GlcNAc $\beta$ 1-4GlcNAc $\beta$ -Sp13
58	Fuca1-2Gal $\beta$ 1-3GalNAc $\beta$ 1-3Gal $\alpha$ -Sp9
59	Fuca1-2Gal $\beta$ 1-3GalNAc $\beta$ 1-3Gal $\alpha$ 1-4Gal $\beta$ 1-4Glc $\beta$ -Sp9
60	Fuca1-2Gal $\beta$ 1-3(Fuca1-4)GlcNAc $\beta$ -Sp8
61	Fuca1-2Gal $\beta$ 1-3GalNAc $\alpha$ -Sp8
62	Fuca1-2Gal $\beta$ 1-3GalNAc $\alpha$ -Sp14
63	Fuca1-2Gal $\beta$ 1-3GalNAc $\beta$ 1-4(Neu5Ac $\alpha$ 2-3)Gal $\beta$ 1-4Glc $\beta$ -Sp0
64	Fuca1-2Gal $\beta$ 1-3GalNAc $\beta$ 1-4(Neu5Ac $\alpha$ 2-3)Gal $\beta$ 1-4Glc $\beta$ -Sp9
65	Fuca1-2Gal $\beta$ 1-3GlcNAc $\beta$ 1-3Gal $\beta$ 1-4Glc $\beta$ -Sp8
66	Fuca1-2Gal $\beta$ 1-3GlcNAc $\beta$ 1-3Gal $\beta$ 1-4Glc $\beta$ -Sp10
67	Fuca1-2Gal $\beta$ 1-3GlcNAc $\beta$ -Sp0
68	Fuca1-2Gal $\beta$ 1-3GlcNAc $\beta$ -Sp8
69	Fuca1-2Gal $\beta$ 1-4(Fuca1-3)GlcNAc $\beta$ 1-3Gal $\beta$ 1-4(Fuca1-3)GlcNAc $\beta$ -Sp0
70	Fuca1-2Gal $\beta$ 1-4(Fuca1-3)GlcNAc $\beta$ 1-3Gal $\beta$ 1-4(Fuca1-3)GlcNAc $\beta$ 1-3Gal $\beta$ 1-4(Fuca1-3)GlcNAc $\beta$ -Sp0
71	Fuca1-2Gal $\beta$ 1-4(Fuca1-3)GlcNAc $\beta$ -Sp0
72	Fuca1-2Gal $\beta$ 1-4(Fuca1-3)GlcNAc $\beta$ -Sp8
73	Fuca1-2Gal $\beta$ 1-4GlcNAc $\beta$ 1-3Gal $\beta$ 1-4GlcNAc $\beta$ -Sp0
74	Fuca1-2Gal $\beta$ 1-4GlcNAc $\beta$ 1-3Gal $\beta$ 1-4GlcNAc $\beta$ 1-3Gal $\beta$ 1-4GlcNAc $\beta$ -Sp0
75	Fuca1-2Gal $\beta$ 1-4GlcNAc $\beta$ -Sp0
76	Fuca1-2Gal $\beta$ 1-4GlcNAc $\beta$ -Sp8
77	Fuca1-2Gal $\beta$ 1-4Glc $\beta$ -Sp0
78	Fuca1-2Gal $\beta$ -Sp8
79	Fuca1-3GlcNAc $\beta$ -Sp8
80	Fuca1-4GlcNAc $\beta$ -Sp8
81	Fuc $\beta$ 1-3GlcNAc $\beta$ -Sp8
82	GalNAc $\alpha$ 1-3(Fuca1-2)Gal $\beta$ 1-3GlcNAc $\beta$ -Sp0
83	GalNAc $\alpha$ 1-3(Fuca1-2)Gal $\beta$ 1-4(Fuca1-3)GlcNAc $\beta$ -Sp0
84	[3OSO <sub>3</sub> ]Gal $\beta$ 1-4(Fuca1-3)Glc-Sp0
85	GalNAc $\alpha$ 1-3(Fuca1-2)Gal $\beta$ 1-4GlcNAc $\beta$ -Sp0
86	GalNAc $\alpha$ 1-3(Fuca1-2)Gal $\beta$ 1-4GlcNAc $\beta$ -Sp8
87	GalNAc $\alpha$ 1-3(Fuca1-2)Gal $\beta$ 1-4Glc $\beta$ -Sp0

88	GlcNAc $\beta$ 1-3Gal $\beta$ 1-3GalNAc $\alpha$ -Sp8
89	GalNAc $\alpha$ 1-3(Fuca1-2)Gal $\beta$ -Sp8
90	GalNAc $\alpha$ 1-3(Fuca1-2)Gal $\beta$ -Sp18
91	GalNAc $\alpha$ 1-3GalNAc $\beta$ -Sp8
92	GalNAc $\alpha$ 1-3Gal $\beta$ -Sp8
93	GalNAc $\alpha$ 1-4(Fuca1-2)Gal $\beta$ 1-4GlcNAc $\beta$ -Sp8
94	GalNAc $\beta$ 1-3GalNAc $\alpha$ -Sp8
95	GalNAc $\beta$ 1-3(Fuca1-2)Gal $\beta$ -Sp8
96	GalNAc $\beta$ 1-3Gal $\alpha$ 1-4Gal $\beta$ 1-4GlcNAc $\beta$ -Sp0
97	GalNAc $\beta$ 1-4(Fuca1-3)GlcNAc $\beta$ -Sp0
98	GalNAc $\beta$ 1-4GlcNAc $\beta$ -Sp0
99	GalNAc $\beta$ 1-4GlcNAc $\beta$ -Sp8
100	Gal $\alpha$ 1-2Gal $\beta$ -Sp8
101	Gal $\alpha$ 1-3(Fuca1-2)Gal $\beta$ 1-3GlcNAc $\beta$ -Sp0
102	Gal $\alpha$ 1-3(Fuca1-2)Gal $\beta$ 1-3GlcNAc $\beta$ -Sp8
103	Gal $\alpha$ 1-3(Fuca1-2)Gal $\beta$ 1-4(Fuca1-3)GlcNAc $\beta$ -Sp0
104	Gal $\alpha$ 1-3(Fuca1-2)Gal $\beta$ 1-4(Fuca1-3)GlcNAc $\beta$ -Sp8
105	Gal $\alpha$ 1-3(Fuca1-2)Gal $\beta$ 1-4GlcNAc-Sp0
106	Gal $\alpha$ 1-3(Fuca1-2)Gal $\beta$ 1-4Glc $\beta$ -Sp0
107	Gal $\alpha$ 1-3(Fuca1-2)Gal $\beta$ -Sp8
108	Gal $\alpha$ 1-3(Fuca1-2)Gal $\beta$ -Sp18
109	Gal $\alpha$ 1-3(Gal $\alpha$ 1-4)Gal $\beta$ 1-4GlcNAc $\beta$ -Sp8
110	Gal $\alpha$ 1-3GalNAc $\alpha$ -Sp8
111	Gal $\alpha$ 1-3GalNAc $\alpha$ -Sp16
112	Gal $\alpha$ 1-3GalNAc $\beta$ -Sp8
113	Gal $\alpha$ 1-3Gal $\beta$ 1-4(Fuca1-3)GlcNAc $\beta$ -Sp8
114	Gal $\alpha$ 1-3Gal $\beta$ 1-3GlcNAc $\beta$ -Sp0
115	Gal $\alpha$ 1-3Gal $\beta$ 1-4GlcNAc $\beta$ -Sp8
116	Gal $\alpha$ 1-3Gal $\beta$ 1-4Glc $\beta$ -Sp0
117	Gal $\alpha$ 1-3Gal $\beta$ -Sp8
118	Gal $\alpha$ 1-4(Fuca1-2)Gal $\beta$ 1-4GlcNAc $\beta$ -Sp8
119	Gal $\alpha$ 1-4Gal $\beta$ 1-4GlcNAc $\beta$ -Sp0
120	Gal $\alpha$ 1-4Gal $\beta$ 1-4GlcNAc $\beta$ -Sp8
121	Gal $\alpha$ 1-4Gal $\beta$ 1-4Glc $\beta$ -Sp0
122	Gal $\alpha$ 1-4GlcNAc $\beta$ -Sp8
123	Gal $\alpha$ 1-6Glc $\beta$ -Sp8
124	Gal $\beta$ 1-2Gal $\beta$ -Sp8
125	Gal $\beta$ 1-3(Fuca1-4)GlcNAc $\beta$ 1-3Gal $\beta$ 1-4(Fuca1-3)GlcNAc $\beta$ -Sp0
126	Gal $\beta$ 1-3(Fuca1-4)GlcNAc $\beta$ 1-3Gal $\beta$ 1-4GlcNAc $\beta$ -Sp0
127	Gal $\beta$ 1-3(Fuca1-4)GlcNAc $\beta$ -Sp0
128	Gal $\beta$ 1-3(Fuca1-4)GlcNAc $\beta$ -Sp8
129	Gal $\beta$ 1-3(Fuca1-4)GlcNAc-Sp8
130	Gal $\beta$ 1-4GlcNAc $\beta$ 1-6GalNAc $\alpha$ -Sp8
131	Gal $\beta$ 1-3(GlcNAc $\beta$ 1-6)GalNAc $\alpha$ -Sp8
132	Gal $\beta$ 1-3(GlcNAc $\beta$ 1-6)GalNAc-Sp14
133	Gal $\beta$ 1-3(Neu5Ac $\alpha$ 2-6)GalNAc $\alpha$ -Sp8
134	Gal $\beta$ 1-3(Neu5Ac $\alpha$ 2-6)GalNAc $\alpha$ -Sp14



135	Galβ1-3(Neu5Acβ2-6)GalNAcα-Sp8
136	Galβ1-3(Neu5Acα2-6)GlcNAcβ1-4Galβ1-4Glcβ-Sp10
137	Galβ1-3GalNAcα-Sp8
138	Galβ1-3GalNAcα-Sp14
139	Galβ1-3GalNAcα-Sp16
140	Galβ1-3GalNAcβ-Sp8
141	Galβ1-3GalNAcβ1-3Galα1-4Galβ1-4Glcβ-Sp0
142	Galβ1-3GalNAcβ1-4(Neu5Acα2-3)Galβ1-4Glcβ-Sp0
143	Galβ1-3GalNAcβ1-4Galβ1-4Glcβ-Sp8
144	Galβ1-3Galβ-Sp8
145	Galβ1-3GlcNAcβ1-3Galβ1-4GlcNAcβ-Sp0
146	Galβ1-3GlcNAcβ1-3Galβ1-4Glcβ-Sp10
147	Galβ1-3GlcNAcβ-Sp0
148	Galβ1-3GlcNAcβ-Sp8
149	Galβ1-4(Fuca1-3)GlcNAcβ-Sp0
150	Galβ1-4(Fuca1-3)GlcNAcβ-Sp8
151	Galβ1-4(Fuca1-3)GlcNAcβ1-4Galβ1-4(Fuca1-3)GlcNAcβ-Sp0
152	Galβ1-4(Fuca1-3)GlcNAcβ1-4Galβ1-4(Fuca1-3)GlcNAcβ1-4Galβ1-4(Fuca1-3)GlcNAcβ-Sp0
153	Galβ1-4[6OSO3]Glcβ-Sp0
154	Galβ1-4[6OSO3]Glcβ-Sp8
155	Galβ1-4GalNAcα1-3(Fuca1-2)Galβ1-4GlcNAcβ-Sp8
156	Galβ1-4GalNAcβ1-3(Fuca1-2)Galβ1-4GlcNAcβ-Sp8
157	Galβ1-4GlcNAcβ1-3GalNAcα-Sp8
158	Galβ1-4GlcNAcβ1-3GalNAcα-Sp14
159	Galβ1-4GlcNAcβ1-3Galβ1-4(Fuca1-3)GlcNAcβ1-3Galβ1-4(Fuca1-3)GlcNAcβ-Sp0
160	Galβ1-4GlcNAcβ1-3Galβ1-4GlcNAcβ1-3Galβ1-4GlcNAcβ-Sp0
161	Galβ1-4GlcNAcβ1-3Galβ1-4GlcNAcβ-Sp0
162	Galβ1-4GlcNAcβ1-3Galβ1-4Glcβ-Sp0
163	Galβ1-4GlcNAcβ1-3Galβ1-4Glcβ-Sp8
164	Galβ1-4GlcNAcβ1-6(Galβ1-3)GalNAcα-Sp8
165	Galβ1-3(Galβ1-4GlcNAcβ1-6)GalNAcα-Sp8
166	Galβ1-3(Galβ1-4GlcNAcβ1-6)GalNAc-Sp14
167	Galβ1-4GlcNAcβ-Sp0
168	Galβ1-4GlcNAcβ-Sp8
169	Galβ1-4Glcβ-Sp0
170	Galβ1-4Glcβ-Sp8
171	GlcNAcα1-3Galβ1-4GlcNAcβ-Sp8
172	GlcNAcα1-6Galβ1-4GlcNAcβ-Sp8
173	GlcNAcβ1-2Galβ1-3GalNAcα-Sp8
174	GlcNAcβ1-3(GlcNAcβ1-6)GalNAcα-Sp8
175	GlcNAcβ1-3(GlcNAcβ1-6)Galβ1-4GlcNAcβ-Sp8
176	GlcNAcβ1-3GalNAcα-Sp8
177	GlcNAcβ1-3GalNAcα-Sp14
178	GlcNAcβ1-3Galβ-Sp8
179	GlcNAcβ1-3Galβ1-4GlcNAcβ-Sp0
180	GlcNAcβ1-3Galβ1-4GlcNAcβ-Sp8

181	GlcNAc $\beta$ 1-3Gal $\beta$ 1-4GlcNAc $\beta$ 1-3Gal $\beta$ 1-4GlcNAc $\beta$ -Sp0
182	GlcNAc $\beta$ 1-3Gal $\beta$ 1-4Glc $\beta$ -Sp0
183	GlcNAc $\beta$ 1-4-MDPLys
184	GlcNAc $\beta$ 1-4(GlcNAc $\beta$ 1-6)GalNAc $\alpha$ -Sp8
185	GlcNAc $\beta$ 1-4Gal $\beta$ 1-4GlcNAc $\beta$ -Sp8
186	GlcNAc $\beta$ 1-4GlcNAc $\beta$ 1-4GlcNAc $\beta$ 1-4GlcNAc $\beta$ 1-4GlcNAc $\beta$ 1-4GlcNAc $\beta$ 1-4 $\beta$ -Sp8
187	GlcNAc $\beta$ 1-4GlcNAc $\beta$ 1-4GlcNAc $\beta$ 1-4GlcNAc $\beta$ 1-4GlcNAc $\beta$ -Sp8
188	GlcNAc $\beta$ 1-4GlcNAc $\beta$ 1-4GlcNAc $\beta$ -Sp8
189	GlcNAc $\beta$ 1-6(Gal $\beta$ 1-3)GalNAc $\alpha$ -Sp8
190	GlcNAc $\beta$ 1-6GalNAc $\alpha$ -Sp8
191	GlcNAc $\beta$ 1-6GalNAc $\alpha$ -Sp14
192	GlcNAc $\beta$ 1-6Gal $\beta$ 1-4GlcNAc $\beta$ -Sp8
193	Glc $\alpha$ 1-4Glc $\beta$ -Sp8
194	Glc $\alpha$ 1-4Glc $\alpha$ -Sp8
195	Glc $\alpha$ 1-6Glc $\alpha$ 1-6Glc $\beta$ -Sp8
196	Glc $\beta$ 1-4Glc $\beta$ -Sp8
197	Glc $\beta$ 1-6Glc $\beta$ -Sp8
198	G-ol-Sp8
199	Glc $\alpha$ -Sp8
200	Glc $\alpha$ $\beta$ -Sp8
201	Glc $\alpha$ $\beta$ 1-3Gal $\beta$ -Sp8
202	Glc $\alpha$ $\beta$ 1-6Gal $\beta$ -Sp8
203	KDN $\alpha$ 2-3Gal $\beta$ 1-3GlcNAc $\beta$ -Sp0
204	KDN $\alpha$ 2-3Gal $\beta$ 1-4GlcNAc $\beta$ -Sp0
205	Man $\alpha$ 1-2Man $\alpha$ 1-2Man $\alpha$ 1-3Man $\alpha$ -Sp9
206	Man $\alpha$ 1-2Man $\alpha$ 1-3(Man $\alpha$ 1-2Man $\alpha$ 1-6)Man $\alpha$ -Sp9
207	Man $\alpha$ 1-2Man $\alpha$ 1-3Man $\alpha$ -Sp9
208	Man $\alpha$ 1-6(Man $\alpha$ 1-2Man $\alpha$ 1-3)Man $\alpha$ 1-6(Man $\alpha$ 1-2Man $\alpha$ 1-3)Man $\beta$ 1-4GlcNAc $\beta$ 1-4GlcNAc $\beta$ -Sp12
209	Man $\alpha$ 1-2Man $\alpha$ 1-6(Man $\alpha$ 1-3)Man $\alpha$ 1-6(Man $\alpha$ 1-2Man $\alpha$ 1-2Man $\alpha$ 1-3)Man $\beta$ 1-4GlcNAc $\beta$ 1-4GlcNAc $\beta$ -Sp12
210	Man $\alpha$ 1-2Man $\alpha$ 1-2Man $\alpha$ 1-3(Man $\alpha$ 1-2Man $\alpha$ 1-3(Man $\alpha$ 1-2Man $\alpha$ 1-6)Man $\alpha$ 1-6)Man $\beta$ 1-4GlcNAc $\beta$ 1-4GlcNAc $\beta$ -Sp12
211	Man $\alpha$ 1-3(Man $\alpha$ 1-6)Man $\alpha$ -Sp9
212	Man $\alpha$ 1-3(Man $\alpha$ 1-2Man $\alpha$ 1-2Man $\alpha$ 1-6)Man $\alpha$ -Sp9
213	Man $\alpha$ 1-6(Man $\alpha$ 1-3)Man $\alpha$ 1-6(Man $\alpha$ 1-2Man $\alpha$ 1-3)Man $\beta$ 1-4GlcNAc $\beta$ 1-4GlcNAc $\beta$ -Sp12
214	Man $\alpha$ 1-6(Man $\alpha$ 1-3)Man $\alpha$ 1-6(Man $\alpha$ 1-3)Man $\beta$ 1-4GlcNAc $\beta$ 1-4GlcNAc $\beta$ -Sp12
215	Man $\beta$ 1-4GlcNAc $\beta$ -Sp0
216	Neu5Ac $\alpha$ 2-3Gal $\beta$ 1-4GlcNAc $\beta$ 1-3Gal $\beta$ 1-4(Fuc $\alpha$ 1-3)GlcNAc-Sp0
217	[3OSO3]Gal $\beta$ 1-4(Fuc $\alpha$ 1-3)[6OSO3]GlcNAc-Sp8
218	Fuc $\alpha$ 1-2[6OSO3]Gal $\beta$ 1-4GlcNAc-Sp0
219	Fuc $\alpha$ 1-2Gal $\beta$ 1-4[6OSO3]GlcNAc-Sp8
220	Fuc $\alpha$ 1-2[6OSO3]Gal $\beta$ 1-4[6OSO3]Glc-Sp0
221	Neu5Ac $\alpha$ 2-3Gal $\beta$ 1-3GalNAc $\alpha$ -Sp8
222	Neu5Ac $\alpha$ 2-3Gal $\beta$ 1-3GalNAc $\alpha$ -Sp14
223	Neu5Ac $\alpha$ 2-8Neu5Ac $\alpha$ 2-8Neu5Ac $\alpha$ 2-8Neu5Ac $\alpha$ 2-3(GalNAc $\beta$ 1-4)Gal $\beta$ 1-4Glc $\beta$ -Sp0
224	Neu5Ac $\alpha$ 2-8Neu5Ac $\alpha$ 2-8Neu5Ac $\alpha$ 2-3(GalNAc $\beta$ 1-4)Gal $\beta$ 1-4Glc $\beta$ -Sp0
225	Neu5Ac $\alpha$ 2-8Neu5Ac $\alpha$ 2-8Neu5Ac $\alpha$ 2-3Gal $\beta$ 1-4Glc $\beta$ -Sp0

226	Neu5Acα2-8Neu5Acα2-3(GalNAcβ1-4)Galβ1-4Glcβ-Sp0
227	Neu5Acα2-8Neu5Acα2-8Neu5Acα-Sp8
228	Neu5Acα2-3(6-O-Su)Galβ1-4(Fuca1-3)GlcNAcβ-Sp8
229	Neu5Acα2-3(GalNAcβ1-4)Galβ1-4GlcNAcβ-Sp0
230	Neu5Acα2-3(GalNAcβ1-4)Galβ1-4GlcNAcβ-Sp8
231	Neu5Acα2-3(GalNAcβ1-4)Galβ1-4Glcβ-Sp0
232	Neu5Acα2-3(Neu5Acα2-3Galβ1-3GalNAcβ1-4)Galβ1-4Glcβ-Sp0
233	Neu5Acα2-3(Neu5Acα2-6)GalNAcα-Sp8
234	Neu5Acα2-3GalNAcα-Sp8
235	Neu5Acα2-3GalNAcβ1-4GlcNAcβ-Sp0
236	Neu5Acα2-3Galβ1-3[6OSO3]GlcNAc-Sp8
237	Neu5Acα2-3Galβ1-3(Fuca1-4)GlcNAcβ-Sp8
238	Neu5Acα2-3Galβ1-3(Fuca1-4)GlcNAcβ1-3Galβ1-4(Fuca1-3)GlcNAcβ-Sp0
239	Neu5Acα2-3Galβ1-3(Neu5Acα2-3Galβ1-4)GlcNAcβ-Sp8
240	Neu5Acα2-3Galβ1-3[6OSO3]GalNAcα-Sp8
241	Neu5Acα2-3Galβ1-3(Neu5Acα2-6)GalNAcα-Sp8
242	Neu5Acα2-3Galβ1-3(Neu5Acα2-6)GalNAcα-Sp14
243	Neu5Acα2-3Galβ-Sp8
244	Neu5Acα2-3Galβ1-3GalNAcβ1-3Galα1-4Galβ1-4Glcβ-Sp0
245	Neu5Acα2-3Galβ1-3GlcNAcβ1-3Galβ1-4GlcNAcβ-Sp0
246	Fuca1-2[6OSO3]Galβ1-4Glc-Sp0
247	Neu5Acα2-3Galβ1-3GlcNAcβ-Sp0
248	Neu5Acα2-3Galβ1-3GlcNAcβ-Sp8
249	Neu5Acα2-3Galβ1-4[6OSO3]GlcNAcβ-Sp8
250	Neu5Acα2-3Galβ1-4(Fuca1-3)[6OSO3]GlcNAcβ-Sp8
251	Neu5Acα2-3Galβ1-4(Fuca1-3)GlcNAcβ1-3Galβ1-4(Fuca1-3)GlcNAcβ1-3Galβ1-4(Fuca1-3)GlcNAcβ-Sp0
252	Neu5Acα2-3Galβ1-4(Fuca1-3)GlcNAcβ-Sp0
253	Neu5Acα2-3Galβ1-4(Fuca1-3)GlcNAcβ-Sp8
254	Neu5Acα2-3Galβ1-4(Fuca1-3)GlcNAcβ1-3Galβ-Sp8
255	Neu5Acα2-3Galβ1-4(Fuca1-3)GlcNAcβ1-3Galβ1-4GlcNAcβ-Sp8
256	Neu5Acα2-3Galβ1-4GlcNAcβ1-3Galβ1-4GlcNAcβ1-3Galβ1-4GlcNAcβ-Sp0
257	Neu5Acα2-3Galβ1-4GlcNAcβ-Sp0
258	Neu5Acα2-3Galβ1-4GlcNAcβ-Sp8
259	Neu5Acα2-3Galβ1-4GlcNAcβ1-3Galβ1-4GlcNAcβ-Sp0
260	Fuca1-2Galβ1-4[6OSO3]Glc-Sp0
261	Neu5Acα2-3Galβ1-4Glcβ-Sp0
262	Neu5Acα2-3Galβ1-4Glcβ-Sp8
263	Neu5Acα2-6GalNAcα-Sp8
264	Neu5Acα2-6GalNAcβ1-4GlcNAcβ-Sp0
265	Neu5Acα2-6Galβ1-4[6OSO3]GlcNAcβ-Sp8
266	Neu5Acα2-6Galβ1-4GlcNAcβ-Sp0
267	Neu5Acα2-6Galβ1-4GlcNAcβ-Sp8
268	Neu5Acα2-6Galβ1-4GlcNAcβ1-3Galβ1-4(Fuca1-3)GlcNAcβ1-3Galβ1-4(Fuca1-3)GlcNAcβ-Sp0
269	Neu5Acα2-6Galβ1-4GlcNAcβ1-3Galβ1-4GlcNAcβ-Sp0
270	Neu5Acα2-6Galβ1-4Glcβ-Sp0
271	Neu5Acα2-6Galβ1-4Glcβ-Sp8

272	Neu5Ac $\alpha$ 2-6Gal $\beta$ -Sp8
273	Neu5Ac $\alpha$ 2-8Neu5Ac $\alpha$ -Sp8
274	Neu5Ac $\alpha$ 2-8Neu5Ac $\alpha$ 2-3Gal $\beta$ 1-4Glc $\beta$ -Sp0
275	Gal $\beta$ 1-3(Fuca1-4)GlcNAc $\beta$ 1-3Gal $\beta$ 1-3(Fuca1-4)GlcNAc $\beta$ -Sp0
276	Neu5Ac $\beta$ 2-6GalNAc $\alpha$ -Sp8
277	Neu5Ac $\beta$ 2-6Gal $\beta$ 1-4GlcNAc $\beta$ -Sp8
278	Neu5Gc $\alpha$ 2-3Gal $\beta$ 1-3(Fuca1-4)GlcNAc $\beta$ -Sp0
279	Neu5Gc $\alpha$ 2-3Gal $\beta$ 1-3GlcNAc $\beta$ -Sp0
280	Neu5Gc $\alpha$ 2-3Gal $\beta$ 1-4(Fuca1-3)GlcNAc $\beta$ -Sp0
281	Neu5Gc $\alpha$ 2-3Gal $\beta$ 1-4GlcNAc $\beta$ -Sp0
282	Neu5Gc $\alpha$ 2-3Gal $\beta$ 1-4Glc $\beta$ -Sp0
283	Neu5Gc $\alpha$ 2-6GalNAc $\alpha$ -Sp0
284	Neu5Gc $\alpha$ 2-6Gal $\beta$ 1-4GlcNAc $\beta$ -Sp0
285	Neu5Gc $\alpha$ -Sp8
286	Gal $\beta$ 1-3(Neu5Ac $\alpha$ 2-3Gal $\beta$ 1-4GlcNAc $\beta$ 1-6)GalNAc $\alpha$ -Sp14
287	Gal $\beta$ 1-3GlcNAc $\beta$ 1-3Gal $\beta$ 1-3GlcNAc $\beta$ -Sp0
288	Gal $\beta$ 1-4(Fuca1-3)[6OSO <sub>3</sub> ]GlcNAc-Sp0
289	Gal $\beta$ 1-4(Fuca1-3)[6OSO <sub>3</sub> ]Glc-Sp0
290	Gal $\beta$ 1-4(Fuca1-3)GlcNAc $\beta$ 1-3Gal $\beta$ 1-3(Fuca1-4)GlcNAc $\beta$ -Sp0
291	Gal $\beta$ 1-4GlcNAc $\beta$ 1-3Gal $\beta$ 1-3GlcNAc $\beta$ -Sp0
292	Neu5Ac $\alpha$ 2-3Gal $\beta$ 1-3GlcNAc $\beta$ 1-3Gal $\beta$ 1-3GlcNAc $\beta$ -Sp0
293	Neu5Ac $\alpha$ 2-3Gal $\beta$ 1-4GlcNAc $\beta$ 1-3Gal $\beta$ 1-3GlcNAc $\beta$ -Sp0
294	[3OSO <sub>3</sub> ][4OSO <sub>3</sub> ]Gal $\beta$ 1-4GlcNAc $\beta$ -Sp0
295	[6OSO <sub>3</sub> ]Gal $\beta$ 1-4[6OSO <sub>3</sub> ]GlcNAc $\beta$ -Sp0
296	6-H <sub>2</sub> PO <sub>3</sub> Glc $\beta$ -Sp10
297	Gal $\beta$ 1-3(Neu5Ac $\alpha$ 2-3Gal $\beta$ 1-4(Fuca1-3)GlcNAc $\beta$ 1-6)GalNAc $\alpha$ -Sp14
298	Gal $\beta$ 1-3Gal $\beta$ 1-4GlcNAc $\beta$ -Sp8
299	Gal $\beta$ 1-4GlcNAc $\beta$ 1-2Man $\alpha$ 1-3(Neu5Ac $\alpha$ 2-6Gal $\beta$ 1-4GlcNAc $\beta$ 1-2Man $\alpha$ 1-6)Man $\beta$ 1-4GlcNAc $\beta$ 1-4GlcNAc $\beta$ -Sp12
300	Gal $\beta$ 1-4GlcNAc $\beta$ 1-3(Gal $\beta$ 1-4GlcNAc $\beta$ 1-6)Gal $\beta$ 1-4GlcNAc-Sp0
301	Gal $\beta$ 1-4GlcNAc $\beta$ 1-3(GlcNAc $\beta$ 1-6)Gal $\beta$ 1-4GlcNAc-Sp0
302	Gal $\beta$ 1-4GlcNAc $\alpha$ 1-6Gal $\beta$ 1-4GlcNAc $\beta$ -Sp0
303	Gal $\beta$ 1-4GlcNAc $\beta$ 1-6Gal $\beta$ 1-4GlcNAc $\beta$ -Sp0
304	GalNAc $\beta$ 1-3Gal $\beta$ -Sp8
305	GlcA $\beta$ 1-3GlcNAc $\beta$ -Sp8
306	GlcNAc $\beta$ 1-2Man $\alpha$ 1-3(Neu5Ac $\alpha$ 2-6Gal $\beta$ 1-4GlcNAc $\beta$ 1-2Man $\alpha$ 1-6)Man $\beta$ 1-4GlcNAc $\beta$ 1-4GlcNAc $\beta$ -Sp12
307	GlcNAc $\beta$ 1-3Man-Sp10
308	GlcNAc $\beta$ 1-4GlcNAc $\beta$ -Sp10
309	GlcNAc $\beta$ 1-4GlcNAc $\beta$ -Sp12
310	HOOC(CH <sub>3</sub> )CH-3-O-GlcNAc $\beta$ 1-4GlcNAc $\beta$ -Sp10
311	Man $\alpha$ 1-6Man $\beta$ -Sp10
312	Man $\alpha$ 1-6(Man $\alpha$ 1-3)Man $\alpha$ 1-6(Man $\alpha$ 1-3)Man $\beta$ -Sp10
313	Man $\alpha$ 1-2Man $\alpha$ 1-2Man $\alpha$ 1-3(Man $\alpha$ 1-2Man $\alpha$ 1-6(Man $\alpha$ 1-3)Man $\alpha$ 1-6)Man $\alpha$ -Sp9
314	Man $\alpha$ 1-2Man $\alpha$ 1-2Man $\alpha$ 1-3(Man $\alpha$ 1-2Man $\alpha$ 1-6(Man $\alpha$ 1-2Man $\alpha$ 1-3)Man $\alpha$ 1-6)Man $\alpha$ -Sp9
315	Neu5Ac $\alpha$ 2-3Gal $\beta$ 1-3(Neu5Ac $\alpha$ 2-3Gal $\beta$ 1-4GlcNAc $\beta$ 1-6)GalNAc $\alpha$ -Sp14
316	Neu5Ac $\alpha$ 2-3Gal $\beta$ 1-4GlcNAc $\beta$ 1-2Man $\alpha$ 1-3(Neu5Ac $\alpha$ 2-6Gal $\beta$ 1-4GlcNAc $\beta$ 1-2Man $\alpha$ 1-6)Man $\beta$ 1-4GlcNAc $\beta$ 1-4GlcNAc $\beta$ -Sp12

317	Neu5Ac $\alpha$ 2-6Gal $\beta$ 1-4GlcNAc $\beta$ 1-2Man $\alpha$ 1-3(Gal $\beta$ 1-4GlcNAc $\beta$ 1-2Man $\alpha$ 1-6)Man $\beta$ 1-4GlcNAc $\beta$ 1-4GlcNAc $\beta$ -Sp12
318	Neu5Ac $\alpha$ 2-6Gal $\beta$ 1-4GlcNAc $\beta$ 1-2Man $\alpha$ 1-3(GlcNAc $\beta$ 1-2Man $\alpha$ 1-6)Man $\beta$ 1-4GlcNAc $\beta$ 1-4GlcNAc $\beta$ -Sp12
319	Neu5Ac $\alpha$ 2-8Neu5Ac $\beta$ -Sp17
320	Neu5Ac $\alpha$ 2-8Neu5Ac $\alpha$ 2-8Neu5Ac $\beta$ -Sp8
321	Neu5Gc $\beta$ 2-6Gal $\beta$ 1-4GlcNAc-Sp8
322	Gal $\beta$ 1-3GlcNAc $\beta$ 1-2Man $\alpha$ 1-3(Gal $\beta$ 1-3GlcNAc $\beta$ 1-2Man $\alpha$ 1-6)Man $\beta$ 1-4GlcNAc $\beta$ 1-4GlcNAc $\beta$ -Sp19
323	Neu5Ac $\alpha$ 2-3Gal $\beta$ 1-4GlcNAc $\beta$ 1-2Man $\alpha$ 1-3(Neu5Ac $\alpha$ 2-3Gal $\beta$ 1-4GlcNAc $\beta$ 1-2Man $\alpha$ 1-6)Man $\beta$ 1-4GlcNAc $\beta$ 1-4GlcNAc $\beta$ -Sp12
324	Neu5Ac $\alpha$ 2-6Gal $\beta$ 1-4GlcNAc $\beta$ 1-2Man $\alpha$ 1-3(Neu5Ac $\alpha$ 2-3Gal $\beta$ 1-4GlcNAc $\beta$ 1-2Man $\alpha$ 1-6)Man $\beta$ 1-4GlcNAc $\beta$ 1-4GlcNAc $\beta$ -Sp12
325	Fuca1-3(Gal $\beta$ 1-4)GlcNAc $\beta$ 1-2Man $\alpha$ 1-3(Fuca1-3(Gal $\beta$ 1-4)GlcNAc $\beta$ 1-2Man $\alpha$ 1-6)Man $\beta$ 1-4GlcNAc $\beta$ 1-4GlcNAc $\beta$ -Sp20
326	Neu5Ac(9Ac)a2-3Gal $\beta$ 1-4GlcNAc $\beta$ -Sp0
327	Neu5Ac(9Ac)a2-3Gal $\beta$ 1-3GlcNAc $\beta$ -Sp0
328	Neu5Ac $\alpha$ 2-6Gal $\beta$ 1-4GlcNAc $\beta$ 1-3Gal $\beta$ 1-3GlcNAc $\beta$ -Sp0
329	Neu5Ac $\alpha$ 2-3Gal $\beta$ 1-3(Fuca1-4)GlcNAc $\beta$ 1-3Gal $\beta$ 1-3(Fuca1-4)GlcNAc $\beta$ -Sp0
330	Neu5Ac $\alpha$ 2-6Gal $\beta$ 1-4GlcNAc $\beta$ 1-3Gal $\beta$ 1-4GlcNAc $\beta$ 1-3Gal $\beta$ 1-4GlcNAc $\beta$ -Sp0
331	Gala1-4Gal $\beta$ 1-4GlcNAc $\beta$ 1-3Gal $\beta$ 1-4Glc $\beta$ -Sp0
332	GalNAc $\beta$ 1-3Gala1-4Gal $\beta$ 1-4GlcNAc $\beta$ 1-3Gal $\beta$ 1-4Glc $\beta$ -Sp0
333	GalNAc $\alpha$ 1-3(Fuca1-2)Gal $\beta$ 1-4GlcNAc $\beta$ 1-3Gal $\beta$ 1-4GlcNAc $\beta$ -Sp0
334	GalNAc $\alpha$ 1-3(Fuca1-2)Gal $\beta$ 1-4GlcNAc $\beta$ 1-3Gal $\beta$ 1-4GlcNAc $\beta$ 1-3Gal $\beta$ 1-4GlcNAc $\beta$ -Sp0
335	Neu5Ac $\alpha$ 2-3-Gal $\beta$ 1-3(Gal $\beta$ 1-4(Fuca1-3)GlcNAc $\beta$ 1-6)GalNAc-Sp14
336	GlcNAc $\alpha$ 1-4Gal $\beta$ 1-4GlcNAc $\beta$ 1-3Gal $\beta$ 1-4GlcNAc $\beta$ 1-3Gal $\beta$ 1-4GlcNAc $\beta$ -Sp0
337	GlcNAc $\alpha$ 1-4Gal $\beta$ 1-4GlcNAc $\beta$ -Sp0
338	GlcNAc $\alpha$ 1-4Gal $\beta$ 1-3GlcNAc $\beta$ -Sp0
339	GlcNAc $\alpha$ 1-4Gal $\beta$ 1-4GlcNAc $\beta$ 1-3Gal $\beta$ 1-4Glc $\beta$ -Sp0
340	GlcNAc $\alpha$ 1-4Gal $\beta$ 1-4GlcNAc $\beta$ 1-3Gal $\beta$ 1-4(Fuca1-3)GlcNAc $\beta$ 1-3Gal $\beta$ 1-4(Fuca1-3)GlcNAc $\beta$ -Sp0
341	GlcNAc $\alpha$ 1-4Gal $\beta$ 1-4GlcNAc $\beta$ 1-3Gal $\beta$ 1-4GlcNAc $\beta$ -Sp0
342	GlcNAc $\alpha$ 1-4Gal $\beta$ 1-3GalNAc-Sp14
343	Man $\alpha$ 1-3(Neu5Ac $\alpha$ 2-6Gal $\beta$ 1-4GlcNAc $\beta$ 1-2Man $\alpha$ 1-6)Man $\beta$ 1-4GlcNAc $\beta$ 1-4GlcNAc-Sp12
344	Neu5Ac $\alpha$ 2-6Gal $\beta$ 1-4GlcNAc $\beta$ 1-2Man $\alpha$ 1-3(Man $\alpha$ 1-6)Man $\beta$ 1-4GlcNAc $\beta$ 1-4GlcNAc-Sp12
345	Neu5Ac $\alpha$ 2-6Gal $\beta$ 1-4GlcNAc $\beta$ 1-2Man $\alpha$ 1-6Man $\beta$ 1-4GlcNAc $\beta$ 1-4GlcNAc-Sp12
346	Neu5Ac $\alpha$ 2-6Gal $\beta$ 1-4GlcNAc $\beta$ 1-2Man $\alpha$ 1-3Man $\beta$ 1-4GlcNAc $\beta$ 1-4GlcNAc-Sp12
347	Gal $\beta$ 1-4GlcNAc $\beta$ 1-2Man $\alpha$ 1-3Man $\beta$ 1-4GlcNAc $\beta$ 1-4GlcNAc-Sp12
348	Gal $\beta$ 1-4GlcNAc $\beta$ 1-2Man $\alpha$ 1-6Man $\beta$ 1-4GlcNAc $\beta$ 1-4GlcNAc-Sp12
349	Gal $\beta$ 1-4GlcNAc $\beta$ 1-2Man $\alpha$ 1-3(Man $\alpha$ 1-6)Man $\beta$ 1-4GlcNAc $\beta$ 1-4GlcNAc $\beta$ -Sp12
350	GlcNAc $\beta$ 1-2Man $\alpha$ 1-3(GlcNAc $\beta$ 1-2Man $\alpha$ 1-6)Man $\beta$ 1-4GlcNAc $\beta$ 1-4(Fuca1-6)GlcNAc $\beta$ -Sp22
351	Gal $\beta$ 1-4GlcNAc $\beta$ 1-2Man $\alpha$ 1-3(Gal $\beta$ 1-4GlcNAc $\beta$ 1-2Man $\alpha$ 1-6)Man $\beta$ 1-4GlcNAc $\beta$ 1-4(Fuca1-6)GlcNAc $\beta$ -Sp22
352	Gal $\beta$ 1-3GlcNAc $\beta$ 1-2Man $\alpha$ 1-3(Gal $\beta$ 1-3GlcNAc $\beta$ 1-2Man $\alpha$ 1-6)Man $\beta$ 1-4GlcNAc $\beta$ 1-4(Fuca1-6)GlcNAc $\beta$ -Sp22
353	Gal $\beta$ 1-3(Fuca1-4)GlcNAc $\beta$ 1-2Man $\alpha$ 1-3(Gal $\beta$ 1-3(Fuca1-4)GlcNAc $\beta$ 1-2Man $\alpha$ 1-6)Man $\beta$ 1-4GlcNAc $\beta$ 1-4GlcNAc $\beta$ -Sp19
354	[6OSO3]GlcNAc $\beta$ 1-3Gal $\beta$ 1-4GlcNAc $\beta$ -Sp0
355	KDN $\alpha$ 2-3Gal $\beta$ 1-4(Fuca1-3)GlcNAc-Sp0

356	KDN $\alpha$ 2-6Gal $\beta$ 1-4GlcNAc-Sp0
357	KDN $\alpha$ 2-3Gal $\beta$ 1-4Glc-Sp0
358	KDN $\alpha$ 2-3Gal $\beta$ 1-3GalNAc $\alpha$ -Sp14
359	Fuca1-2Gal $\beta$ 1-3GlcNAc $\beta$ 1-2Man $\alpha$ 1-3(Fuca1-2Gal $\beta$ 1-3GlcNAc $\beta$ 1-2Man $\alpha$ 1-6)Man $\beta$ 1-4GlcNAc $\beta$ 1-4GlcNAc $\beta$ -Sp20
360	Fuca1-2Gal $\beta$ 1-4GlcNAc $\beta$ 1-2Man $\alpha$ 1-3(Fuca1-2Gal $\beta$ 1-4GlcNAc $\beta$ 1-2Man $\alpha$ 1-6)Man $\beta$ 1-4GlcNAc $\beta$ 1-4GlcNAc $\beta$ -Sp20
361	Fuca1-2Gal $\beta$ 1-4(Fuca1-3)GlcNAc $\beta$ 1-2Man $\alpha$ 1-3(Fuca1-2Gal $\beta$ 1-4(Fuca1-3)GlcNAc $\beta$ 1-2Man $\alpha$ 1-6)Man $\beta$ 1-4GlcNAc $\beta$ 1-4GlcNAc $\beta$ -Sp20
362	Gal $\alpha$ 1-3Gal $\beta$ 1-4GlcNAc $\beta$ 1-2Man $\alpha$ 1-3(Gal $\alpha$ 1-3Gal $\beta$ 1-4GlcNAc $\beta$ 1-2Man $\alpha$ 1-6)Man $\beta$ 1-4GlcNAc $\beta$ 1-4GlcNAc $\beta$ -Sp20
363	Man $\alpha$ 1-3(Gal $\beta$ 1-4GlcNAc $\beta$ 1-2Man $\alpha$ 1-6)Man $\beta$ 1-4GlcNAc $\beta$ 1-4GlcNAc $\beta$ -Sp12
364	Gal $\beta$ 1-3(Fuca1-4)GlcNAc $\beta$ 1-2Man $\alpha$ 1-3(Gal $\beta$ 1-3(Fuca1-4)GlcNAc $\beta$ 1-2Man $\alpha$ 1-6)Man $\beta$ 1-4GlcNAc $\beta$ 1-4(Fuca1-6)GlcNAc $\beta$ -Sp22
365	Neu5Ac $\alpha$ 2-6GlcNAc $\beta$ 1-4GlcNAc-Sp21
366	Neu5Ac $\alpha$ 2-6GlcNAc $\beta$ 1-4GlcNAc $\beta$ 1-4GlcNAc-Sp21
367	Fuca1-2Gal $\beta$ 1-3GlcNAc $\beta$ 1-3(Gal $\beta$ 1-4(Fuca1-3)GlcNAc $\beta$ 1-6)Gal $\beta$ 1-4Glc-Sp21
368	Gal $\beta$ 1-4GlcNAc $\beta$ 1-2(Gal $\beta$ 1-4GlcNAc $\beta$ 1-4)Man $\alpha$ 1-3(Gal $\beta$ 1-4GlcNAc $\beta$ 1-2Man $\alpha$ 1-6)Man $\beta$ 1-4GlcNAc $\beta$ 1-4GlcNAc-Sp21
369	GalNAc $\alpha$ 1-3(Fuca1-2)Gal $\beta$ 1-4GlcNAc $\beta$ 1-2Man $\alpha$ 1-3(GalNAc $\alpha$ 1-3(Fuca1-2)Gal $\beta$ 1-4GlcNAc $\beta$ 1-2Man $\alpha$ 1-6)Man $\beta$ 1-4GlcNAc $\beta$ 1-4GlcNAc $\beta$ -Sp20
370	Gal $\alpha$ 1-3(Fuca1-2)Gal $\beta$ 1-4GlcNAc $\beta$ 1-2Man $\alpha$ 1-3(Gal $\alpha$ 1-3(Fuca1-2)Gal $\beta$ 1-4GlcNAc $\beta$ 1-2Man $\alpha$ 1-6)Man $\beta$ 1-4GlcNAc $\beta$ 1-4GlcNAc $\beta$ -Sp20
371	Gal $\alpha$ 1-3Gal $\beta$ 1-4(Fuca1-3)GlcNAc $\beta$ 1-2Man $\alpha$ 1-3(Gal $\alpha$ 1-3Gal $\beta$ 1-4(Fuca1-3)GlcNAc $\beta$ 1-2Man $\alpha$ 1-6)Man $\beta$ 1-4GlcNAc $\beta$ 1-4GlcNAc $\beta$ -Sp20
372	GalNAc $\alpha$ 1-3(Fuca1-2)Gal $\beta$ 1-3GlcNAc $\beta$ 1-2Man $\alpha$ 1-3(GalNAc $\alpha$ 1-3(Fuca1-2)Gal $\beta$ 1-3GlcNAc $\beta$ 1-2Man $\alpha$ 1-6)Man $\beta$ 1-4GlcNAc $\beta$ 1-4GlcNAc $\beta$ -Sp20
373	Gal $\alpha$ 1-3(Fuca1-2)Gal $\beta$ 1-3GlcNAc $\beta$ 1-2Man $\alpha$ 1-3(Gal $\alpha$ 1-3(Fuca1-2)Gal $\beta$ 1-3GlcNAc $\beta$ 1-2Man $\alpha$ 1-6)Man $\beta$ 1-4GlcNAc $\beta$ 1-4GlcNAc $\beta$ -Sp20
374	Fuca1-2Gal $\beta$ 1-3(Fuca1-4)GlcNAc $\beta$ 1-2Man $\alpha$ 1-3(Fuca1-2Gal $\beta$ 1-3(Fuca1-4)GlcNAc $\beta$ 1-2Man $\alpha$ 1-6)Man $\beta$ 1-4GlcNAc $\beta$ 1-4GlcNAc $\beta$ -Sp19
375	Neu5Ac $\alpha$ 2-3Gal $\beta$ 1-4GlcNAc $\beta$ 1-3GalNAc-Sp14
376	Neu5Ac $\alpha$ 2-6Gal $\beta$ 1-4GlcNAc $\beta$ 1-3GalNAc-Sp14
377	Neu5Ac $\alpha$ 2-3Gal $\beta$ 1-4(Fuca1-3)GlcNAc $\beta$ 1-3GalNAc $\alpha$ -Sp14
378	(GalNAc $\beta$ 1-4GlcNAc $\beta$ 1-2Man $\alpha$ 1-6)GalNAc $\beta$ 1-4GlcNAc $\beta$ 1-2Man $\alpha$ 1-3Man $\beta$ 1-4GlcNAc $\beta$ 1-4GlcNAc-Sp12
379	Gal $\beta$ 1-3GalNAc $\alpha$ 1-3(Fuca1-2)Gal $\beta$ 1-4Glc-Sp0
380	Gal $\beta$ 1-3GalNAc $\alpha$ 1-3(Fuca1-2)Gal $\beta$ 1-4GlcNAc-Sp0
381	Gal $\beta$ 1-3GlcNAc $\beta$ 1-3(Gal $\beta$ 1-3GlcNAc $\beta$ 1-3Gal $\beta$ 1-4GlcNAc $\beta$ 1-6)Gal $\beta$ 1-4Glc $\beta$ -Sp0
382	Gal $\beta$ 1-3GlcNAc $\beta$ 1-3(Gal $\beta$ 1-4(Fuca1-3)GlcNAc $\beta$ 1-6)Gal $\beta$ 1-4Glc-Sp21
383	Fuca1-2Gal $\beta$ 1-3(Fuca1-4)GlcNAc $\beta$ 1-3(Gal $\beta$ 1-4GlcNAc $\beta$ 1-6)Gal $\beta$ 1-4Glc-Sp21
384	Fuca1-2Gal $\beta$ 1-3(Fuca1-4)GlcNAc $\beta$ 1-3(Gal $\beta$ 1-4(Fuca1-3)GlcNAc $\beta$ 1-6)Gal $\beta$ 1-4Glc-Sp21
385	Gal $\beta$ 1-3GlcNAc $\beta$ 1-3(Gal $\beta$ 1-3GlcNAc $\beta$ 1-3Gal $\beta$ 1-4(Fuca1-3)GlcNAc $\beta$ 1-6)Gal $\beta$ 1-4Glc-Sp21
386	Gal $\beta$ 1-4GlcNAc $\beta$ 1-2(Gal $\beta$ 1-4GlcNAc $\beta$ 1-4)Man $\alpha$ 1-3(Gal $\beta$ 1-4GlcNAc $\beta$ 1-2(Gal $\beta$ 1-4GlcNAc $\beta$ 1-6)Man $\alpha$ 1-6)Man $\beta$ 1-4GlcNAc $\beta$ 1-4GlcNAc $\beta$ -Sp21
387	GlcNAc $\beta$ 1-2(GlcNAc $\beta$ 1-4)Man $\alpha$ 1-3(GlcNAc $\beta$ 1-2Man $\alpha$ 1-6)Man $\beta$ 1-4GlcNAc $\beta$ 1-4GlcNAc-Sp21
388	Fuca1-2Gal $\beta$ 1-3GalNAc $\alpha$ 1-3(Fuca1-2)Gal $\beta$ 1-4Glc $\beta$ -Sp0
389	Fuca1-2Gal $\beta$ 1-3GalNAc $\alpha$ 1-3(Fuca1-2)Gal $\beta$ 1-4GlcNAc $\beta$ -Sp0
390	Gal $\beta$ 1-3GlcNAc $\beta$ 1-3GalNAc $\alpha$ -Sp14
391	Neu5Ac $\alpha$ 2-3(GalNAc $\beta$ 1-4)Gal $\beta$ 1-4GlcNAc $\beta$ 1-3GalNAc $\alpha$ -Sp14
392	GalNAc $\alpha$ 1-3(Fuca1-2)Gal $\beta$ 1-3GalNAc $\alpha$ 1-3(Fuca1-2)Gal $\beta$ 1-4GlcNAc $\beta$ -Sp0

393	Gal $\alpha$ 1-3Gal $\beta$ 1-3GlcNAc $\beta$ 1-2Man $\alpha$ 1-3(Gal $\alpha$ 1-3Gal $\beta$ 1-3GlcNAc $\beta$ 1-2Man $\alpha$ 1-6)Man $\beta$ 1-4GlcNAc $\beta$ 1-4GlcNAc-Sp19
394	Gal $\alpha$ 1-3Gal $\beta$ 1-3(Fuca1-4)GlcNAc $\beta$ 1-2Man $\alpha$ 1-3(Gal $\alpha$ 1-3Gal $\beta$ 1-3(Fuca1-4)GlcNAc $\beta$ 1-2Man $\alpha$ 1-6)Man $\beta$ 1-4GlcNAc $\beta$ 1-4GlcNAc-Sp19
395	Gal $\beta$ 1-4GlcNAc $\beta$ 1-2Man $\alpha$ 1-3(GlcNAc $\beta$ 1-2Man $\alpha$ 1-6)Man $\beta$ 1-4GlcNAc $\beta$ 1-4GlcNAc-Sp12
396	GlcNAc $\beta$ 1-2Man $\alpha$ 1-3(Gal $\beta$ 1-4GlcNAc $\beta$ 1-2Man $\alpha$ 1-6)Man $\beta$ 1-4GlcNAc $\beta$ 1-4GlcNAc-Sp12
397	Neu5Ac $\alpha$ 2-3Gal $\beta$ 1-3GlcNAc $\beta$ 1-3GalNAc $\alpha$ -Sp14
398	Fuca1-2Gal $\beta$ 1-4GlcNAc $\beta$ 1-3GalNAc $\alpha$ -Sp14
399	Gal $\beta$ 1-4(Fuca1-3)GlcNAc $\beta$ 1-3GalNAc $\alpha$ -Sp14
400	GalNAc $\alpha$ 1-3GalNAc $\beta$ 1-3Gal $\alpha$ 1-4Gal $\beta$ 1-4GlcNAc $\beta$ -Sp0
401	Gal $\alpha$ 1-4Gal $\beta$ 1-3GlcNAc $\beta$ 1-2Man $\alpha$ 1-3(Gal $\alpha$ 1-4Gal $\beta$ 1-3GlcNAc $\beta$ 1-2Man $\alpha$ 1-6)Man $\beta$ 1-4GlcNAc $\beta$ 1-4GlcNAc $\beta$ -Sp19
402	Gal $\alpha$ 1-4Gal $\beta$ 1-4GlcNAc $\beta$ 1-2Man $\alpha$ 1-3(Gal $\alpha$ 1-4Gal $\beta$ 1-4GlcNAc $\beta$ 1-2Man $\alpha$ 1-6)Man $\beta$ 1-4GlcNAc $\beta$ 1-4GlcNAc $\beta$ -LVANKT
403	Gal $\alpha$ 1-3Gal $\beta$ 1-4GlcNAc $\beta$ 1-3GalNAc $\alpha$ -Sp14
404	Gal $\beta$ 1-3GlcNAc $\beta$ 1-6Gal $\beta$ 1-4GlcNAc $\beta$ -Sp0
405	Gal $\beta$ 1-3GlcNAc $\alpha$ 1-6Gal $\beta$ 1-4GlcNAc $\beta$ -Sp0
406	GalNAc $\beta$ 1-3Gal $\alpha$ 1-6Gal $\beta$ 1-4Glc $\beta$ -Sp8
407	GlcNAc $\beta$ 1-6(GlcNAc $\beta$ 1-3)GalNAc $\alpha$ -Sp14
408	Gal $\alpha$ 1-3(Fuca1-2)Gal $\beta$ 1-4(Fuca1-3)Glc $\beta$ -Sp21
409	Neu5Ac $\alpha$ 2-6Gal $\beta$ 1-3GlcNAc $\beta$ 1-3(Gal $\beta$ 1-4GlcNAc $\beta$ 1-6)Gal $\beta$ 1-4Glc-Sp21
410	Gal $\beta$ 1-3GalNAc $\beta$ 1-4(Neu5Ac $\alpha$ 2-8Neu5Ac $\alpha$ 2-3)Gal $\beta$ 1-4Glc $\beta$ -Sp0
411	Neu5Ac $\alpha$ 2-3Gal $\beta$ 1-3GalNAc $\beta$ 1-4(Neu5Ac $\alpha$ 2-8Neu5Ac $\alpha$ 2-3)Gal $\beta$ 1-4Glc $\beta$ -Sp0
412	Gal $\alpha$ 1-3(Fuca1-2)Gal $\beta$ 1-4GlcNAc $\beta$ 1-3GalNAc $\alpha$ -Sp14
413	GalNAc $\alpha$ 1-3(Fuca1-2)Gal $\beta$ 1-4GlcNAc $\beta$ 1-3GalNAc $\alpha$ -Sp14
414	GalNAc $\alpha$ 1-3GalNAc $\beta$ 1-3Gal $\alpha$ 1-4Gal $\beta$ 1-4Glc $\beta$ -Sp0
415	Fuca1-2Gal $\beta$ 1-4(Fuca1-3)GlcNAc $\beta$ 1-3GalNAc $\alpha$ -Sp14
416	Gal $\alpha$ 1-3(Fuca1-2)Gal $\beta$ 1-4(Fuca1-3)GlcNAc $\beta$ 1-3GalNAc-Sp14
417	GalNAc $\alpha$ 1-3(Fuca1-2)Gal $\beta$ 1-4(Fuca1-3)GlcNAc $\beta$ 1-3GalNAc-Sp14
418	Gal $\beta$ 1-4(Fuca1-3)GlcNAc $\beta$ 1-2Man $\alpha$ 1-3(Gal $\beta$ 1-4(Fuca1-3)GlcNAc $\beta$ 1-2Man $\alpha$ 1-6)Man $\beta$ 1-4GlcNAc $\beta$ 1-4(Fuca1-6)GlcNAc $\beta$ -Sp22
419	Fuca1-2Gal $\beta$ 1-4GlcNAc $\beta$ 1-2Man $\alpha$ 1-3(Fuca1-2Gal $\beta$ 1-4GlcNAc $\beta$ 1-2Man $\alpha$ 1-6)Man $\beta$ 1-4GlcNAc $\beta$ 1-4(Fuca1-6)GlcNAc $\beta$ -Sp22
420	GlcNAc $\beta$ 1-2Man $\alpha$ 1-3(GlcNAc $\beta$ 1-2(GlcNAc $\beta$ 1-6)Man $\alpha$ 1-6)Man $\beta$ 1-4GlcNAc $\beta$ 1-4GlcNAc $\beta$ -Sp19
421	Fuca1-2Gal $\beta$ 1-3GlcNAc $\beta$ 1-3GalNAc-Sp14
422	Gal $\alpha$ 1-3(Fuca1-2)Gal $\beta$ 1-3GlcNAc $\beta$ 1-3GalNAc-Sp14
423	GalNAc $\alpha$ 1-3(Fuca1-2)Gal $\beta$ 1-3GlcNAc $\beta$ 1-3GalNAc-Sp14
424	Gal $\alpha$ 1-3Gal $\beta$ 1-3GlcNAc $\beta$ 1-3GalNAc-Sp14
425	Fuca1-2Gal $\beta$ 1-3GlcNAc $\beta$ 1-2Man $\alpha$ 1-3(Fuca1-2Gal $\beta$ 1-3GlcNAc $\beta$ 1-2Man $\alpha$ 1-6)Man $\beta$ 1-4GlcNAc $\beta$ 1-4(Fuca1-6)GlcNAc $\beta$ -Sp22
426	Gal $\alpha$ 1-3(Fuca1-2)Gal $\beta$ 1-4GlcNAc $\beta$ 1-2Man $\alpha$ 1-3(Gal $\alpha$ 1-3(Fuca1-2)Gal $\beta$ 1-4GlcNAc $\beta$ 1-2Man $\alpha$ 1-6)Man $\beta$ 1-4GlcNAc $\beta$ 1-4(Fuca1-6)GlcNAc $\beta$ -Sp22
427	Gal $\beta$ 1-3GlcNAc $\beta$ 1-2Man $\alpha$ 1-3(Gal $\beta$ 1-3GlcNAc $\beta$ 1-2(Gal $\beta$ 1-3GlcNAc $\beta$ 1-6)Man $\alpha$ 1-6)Man $\beta$ 1-4GlcNAc $\beta$ 1-4GlcNAc $\beta$ -Sp19
428	Fuca1-2Gal $\beta$ 1-3GlcNAc $\beta$ 1-3(Gal $\beta$ 1-4GlcNAc $\beta$ 1-6)Gal $\beta$ 1-4Glc-Sp21
429	Gal $\beta$ 1-4GlcNAc $\beta$ 1-3Gal $\beta$ 1-4(Fuca1-3GlcNAc $\beta$ 1-6)Gal $\beta$ 1-4Glc-Sp21
430	GlcNAc $\beta$ 1-2Man $\alpha$ 1-3(GlcNAc $\beta$ 1-4)(GlcNAc $\beta$ 1-2Man $\alpha$ 1-6)Man $\beta$ 1-4GlcNAc $\beta$ 1-4GlcNAc-Sp21
431	GlcNAc $\beta$ 1-4(GlcNAc $\beta$ 1-2)Man $\alpha$ 1-3(GlcNAc $\beta$ 1-4)(GlcNAc $\beta$ 1-2Man $\alpha$ 1-6)Man $\beta$ 1-4GlcNAc $\beta$ 1-4GlcNAc-Sp21
432	GlcNAc $\beta$ 1-2Man $\alpha$ 1-3(GlcNAc $\beta$ 1-4)(GlcNAc $\beta$ 1-6(GlcNAc $\beta$ 1-2)Man $\alpha$ 1-6)Man $\beta$ 1-

	4GlcNAcβ1-4GlcNAc-Sp21
433	GlcNAcβ1-4(GlcNAcβ1-2)Manα1-3(GlcNAcβ1-4)(GlcNAcβ1-6(GlcNAcβ1-2)Manα1-6)Manβ1-4GlcNAcβ1-4GlcNAc-Sp21
434	Galβ1-4GlcNAcβ1-2Manα1-3(GlcNAcβ1-4)(Galβ1-4GlcNAcβ1-2)Manβ1-4GlcNAcβ1-4GlcNAc-Sp21
435	Galβ1-4GlcNAcβ1-4(Galβ1-4GlcNAcβ1-2)Manα1-3(GlcNAcβ1-4)(Galβ1-4GlcNAcβ1-2Manα1-6)Manβ1-4GlcNAcβ1-4GlcNAc-Sp21
436	Galβ1-4GlcNAcβ1-2Manα1-3(GlcNAcβ1-4)(Galβ1-4GlcNAcβ1-6(Galβ1-4GlcNAcβ1-2)Manα1-6)Manβ1-4GlcNAcβ1-4GlcNAc-Sp21
437	Galβ1-4GlcNAcβ1-4(Galβ1-4GlcNAcβ1-2)Manα1-3(GlcNAcβ1-4)(Galβ1-4GlcNAcβ1-6(Galβ1-4-GlcNAcβ1-2)Manα1-6)Manβ1-4GlcNAcβ1-4GlcNAc-Sp21
438	Galα1-3Galβ1-4Glc-Sp10
439	Galβ1-4Galβ-Sp10
440	Galβ1-6Galβ-Sp10
441	Neu5Aca2-3Galβ1-4GlcNAcβ1-3Galβ-Sp8
442	GalNAcβ1-6GalNAcβ-Sp8
443	[6OSO3]Galβ1-3GlcNAcβ-Sp0
444	[6OSO3]Galβ1-3[6OSO3]GlcNAc-Sp0
445	Fuca1-2Galβ1-4GlcNAcβ1-2(Fuca1-2Galβ1-4GlcNAcβ1-4)Manα1-3(Fuca1-2Galβ1-4GlcNAcβ1-2Manα1-6)Manβ1-4GlcNAcβ1-4GlcNAcβ-Sp12
446	Fuca1-2Galβ1-4(Fuca1-3)GlcNAcβ1-2(Fuca1-2Galβ1-4(Fuca1-3)GlcNAcβ1-4)Manα1-3(Fuca1-2Galβ1-4(Fuca1-3)GlcNAcβ1-2Manα1-6)Manβ1-4GlcNAcβ1-4GlcNAcβ-Sp12
447	Galβ1-4GlcNAcβ1-3(Galβ1-4GlcNAcβ1-6)GalNAc-Sp14
448	Galβ1-4GlcNAcβ1-6GalNAc-Sp14
449	Galβ1-4(Fuca1-3)GlcNAcβ1-6GalNAc-Sp14
450	Galβ1-4GlcNAcβ1-2Manα-Sp0
451	Fuca1-2Galβ1-4GlcNAcβ1-3(Fuca1-2Galβ1-4GlcNAcβ1-6)GalNAc-Sp14
452	Galα1-3Fuca1-2Galβ1-4GlcNAcβ1-3(Galα1-3Fuca1-2Galβ1-4GlcNAcβ1-6)GalNAc-Sp14
453	GalNAca1-3Fuca1-2Galβ1-4GlcNAcβ1-3(GalNAca1-3Fuca1-2Galβ1-4GlcNAcβ1-6)GalNAc-Sp14
454	Neu5Aca2-8Neu5Aca2-3Galβ1-3GalNAcb1-4(Neu5Aca2-8Neu5Aca2-3)Galβ1-4Glc-Sp0
455	GalNAcβ1-4Galβ1-4Glc-b-sp0
456	GalNAca1-3(Fuca1-2)Galβ1-4GlcNAcβ1-2Manα1-6(GalNAca1-3(Fuca1-2)Galβ1-4GlcNAcβ1-2Manα1-3)Manβ1-4GlcNAcβ1-4(Fuca1-6)GlcNAcβ-Sp22
457	Galα1-3(Fuca1-2)Galβ1-3GlcNAcβ1-2Manα1-6(Galα1-3(Fuca1-2)Galβ1-3GlcNAcβ1-2Manα1-3)Manβ1-4GlcNAcβ1-4(Fuca1-6)GlcNAcβ-Sp22
458	Neu5Aca2-6Galβ1-4GlcNAcβ1-6(Fuca1-2Galβ1-3GlcNAcβ1-3)Galβ-4Glc-Sp21
459	GalNAca1-3(Fuca1-2)Galβ1-3GlcNAcβ1-2Manα1-6(GalNAca1-3(Fuca1-2)Galβ1-3GlcNAcβ1-2Manα1-3)Manβ1-4GlcNAcβ1-4(Fuca1-6)GlcNAcβ-Sp22
460	Galβ1-4GlcNAcβ1-6(Galβ1-4GlcNAcβ1-2)Manα1-6(Galβ1-4GlcNAcβ1-2Manα1-3)Manβ1-4GlcNAcβ1-4GlcNAcβ-Sp19
461	Galβ1-4GlcNAcβ-(OCH <sub>2</sub> CH <sub>2</sub> ) <sub>6</sub> NH <sub>2</sub>
462	Galα1-3(Fuca1-2)Galβ1-3GalNAca-Sp8
463	Galα1-3(Fuca1-2)Galβ1-3GalNAcb-Sp8
464	Glcα1-6Glcα1-6Glcα1-6Glcβ-Sp10
465	Glcα1-4Glcα1-4Glcα1-4Glcβ-Sp10



**Supplementary Table 1** List of glycans tested in glycoarray experiment.

Supplementary Table 2.

		AutoRg (PRIMUS)			AutoRg (cmd line)			Guinier Region			Average of Methods		
Concentration (in mg/mL)	Exposure #	Rg (in Å)	±	error	Rg (in Å)	±	error	Rg (in Å)	±	error	Rg (in Å)	±	error
5.3	1	29	±	2	29	±	4	27.8	±	0.4	29	±	2
	2	28.2	±	0.4	28	±	3	27.6	±	0.4	28	±	1.2
2.7	1	27.9	±	0.2	28	±	3	27.9	±	0.6	28	±	1
	2	28.5	±	0.1	28	±	4	28.1	±	0.6	28	±	2
1.3	1	28.2	±	0.9	30	±	10	29	±	1	28	±	5
	2	20	±	10	20	±	20	29	±	1	30	±	10

---

**Supplementary Table 2** Comparison of estimated radius of gyration for successive exposures for each concentration via different methods within the ATSAS package.