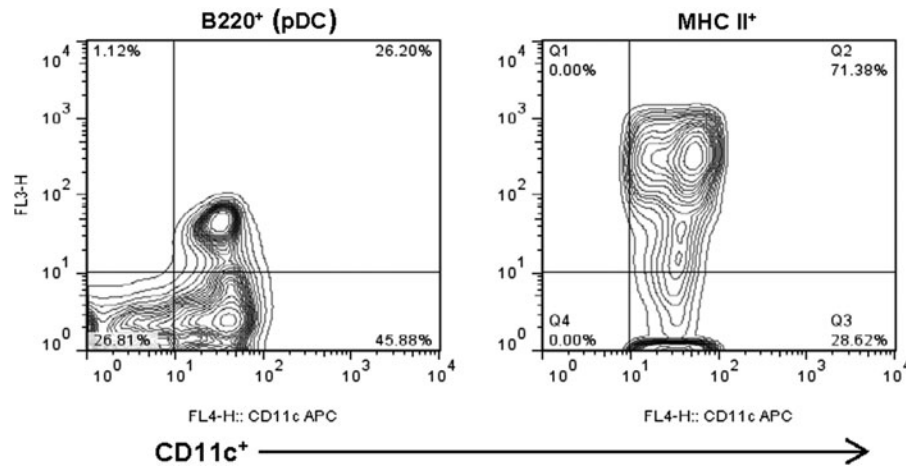


Supplementary Data



SUPPLEMENTARY FIG. S1. Flow cytometry profile of BMDCs tested in this work. BMDCs were stained with antibody against CD11c, B220, or MHCII and detected in the FACSCalibur analyzed by Flowjo software. CD11c⁺ and B220⁺ cells represent pDCs. Similar data were obtained by 3 independent analyses. BMDCs, bone marrow-derived DCs.