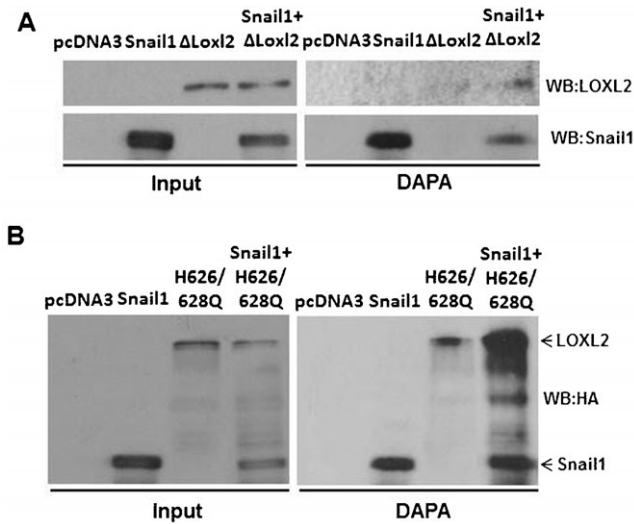
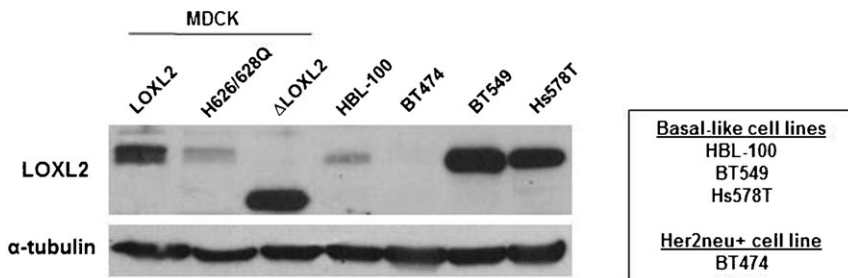


Supplementary Material

Eva P. Cuevas et al. doi: 10.1242/bio.20146841



**Fig. S1. Co-expression of Snail1 and LOXL2 mutants increases Snail1 binding to the E-pal element of the E-cadherin promoter.** DAPA assays comparing the binding affinity to the E-pal probe of Snail1 and/or LOXL2 mutants. Increased Snail1 binding was observed in the presence of either ΔLOXL2 (A) or H626/628Q (B) mutant compared to the binding found when each factor was expressed individually in HEK293T cells.



**Fig. S2. Ectopic LOXL2 expression in MDCK cells compared to endogenous LOXL2 level in basal-like breast cancer cells.** Western blot analyses of whole cell extracts from MDCK cells stably expressing wild-type LOXL2 and LOXL2i mutants, and the indicated human breast cells for LOXL2 using anti-LOXL2 antibodies. α-tubulin was used as a loading control. Among the basal-like cells, HBL-100 are non-tumorigenic and the rest are tumorigenic. As a LOXL2 negative control, breast ErbB2+ cells were analysed (Moreno-Bueno et al., 2011).

**Table S1. Antibodies used in Western blot, immunofluorescence and immunoprecipitation assays.**

Antibody	Host	Application			Source
		WB	IF	IP	
<b>Primary antibodies</b>					
E-cadherin (ECCD-2)	Rat	1:1000	1:100		M. Takeichi, Ricken Center, Japan
N-cadherin (3B9)	Mouse	1:500			Zymed Laboratories
fibronectin	Rabbit	1:1000			Chemicon International
vimentin (V9)	Mouse	1:1000	1:100		Dako
$\alpha$ -vinculin	Mouse		1:100		Sigma-Aldrich
ZO-1	Rabbit		1:100		Zymed
LOXL2	Rabbit	1:1000	1:100	1:200	K. Csiszar (Hollosi et al., 2009)
Snail1	Mouse	1:1000	1:100		Cell Signaling
Flag (M2)	Mouse	1:1000	1:100		Sigma-Aldrich
HA	Rat	1:1000	1:100		Roche
pFAK	Rabbit	1:500	1:100		Cell Signaling
FAK	Mouse	1:1000			BD Transduction
pSrc	Rabbit	1:1000	1:100		Abcam
Src	Rabbit	1:1000			Cell Signaling
Histone H3	Rabbit		1:100		Santa Cruz
$\alpha$ -tubulin (DM1A)	Mouse	1:10,000			Sigma-Aldrich
<b>Secondary antibodies</b>					
rabbit-HRP	Donkey	1:8000			GE Healthcare
mouse-HRP	Sheep	1:8000			GE Healthcare
rat-HRP	Goat	1:8000			GE Healthcare
rat Alexa 488/546	Goat		1:1000		Molecular Probes
rabbit Alexa 488/546	Goat		1:1000		Molecular Probes
mouse Alexa 488/546	Goat		1:1000		Molecular Probes

HRP = horseradish peroxidase; WB = Western blot; IF = Immunofluorescence; IP = Immunoprecipitation.