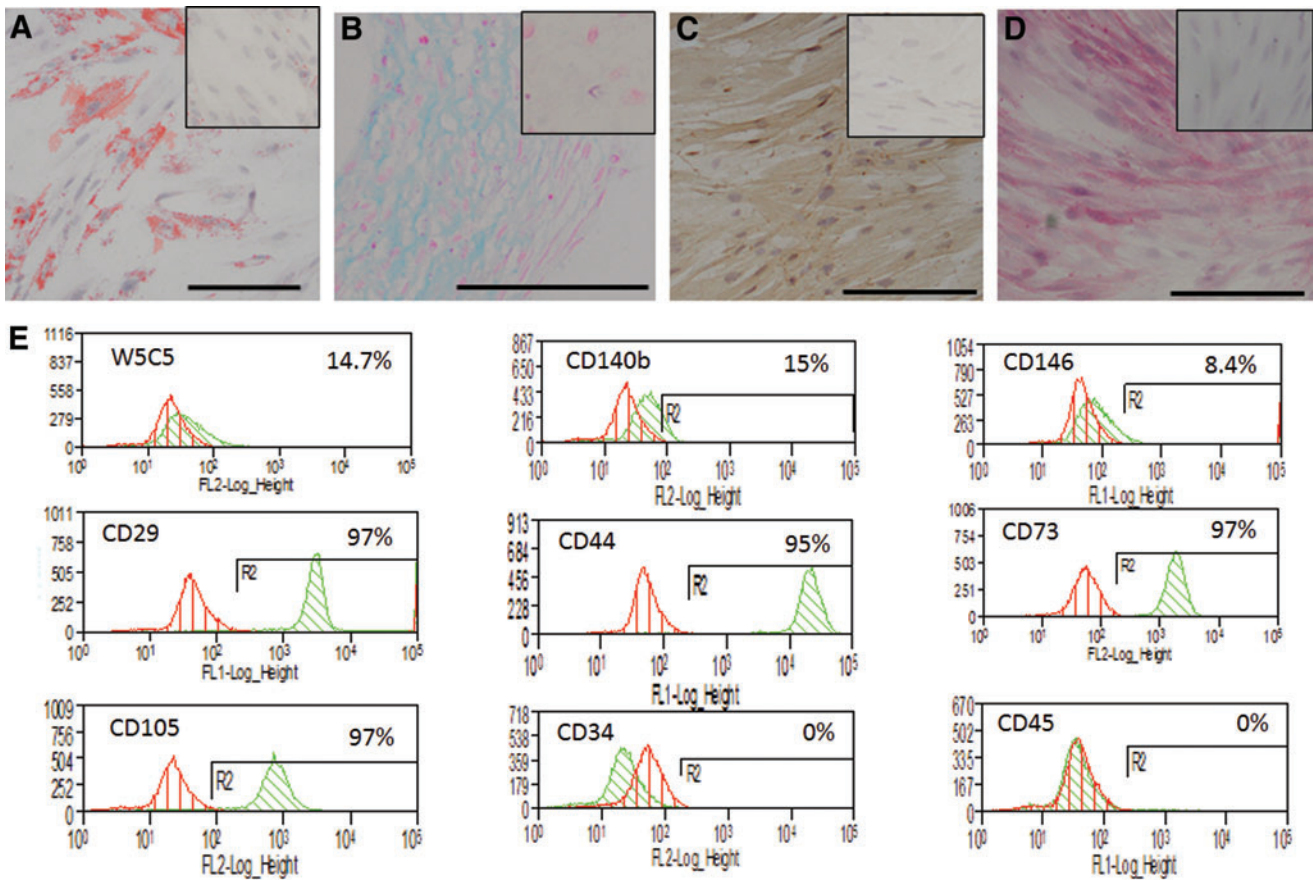


Supplementary Data



SUPPLEMENTARY FIG. S1. Histological staining of P6 W5C5+ endometrial mesenchymal stem cells (eMSC) after 4 weeks culture in (A) adipogenic, (B) chondrogenic, (C) myogenic, and (D) osteogenic induction media stained for (A) Oil Red O, (B) Alcian blue, (C) alpha-smooth muscle actin (α SMA), (D) and Alkaline Phosphatase. (E) Flow cytometric analysis of P6 W5C5+eMSC showing mesenchymal stem cells (MSC) positive and negative markers as indicated. Scale bar in (A, C, D) indicates 200 μ m, in (B) 100 μ m.