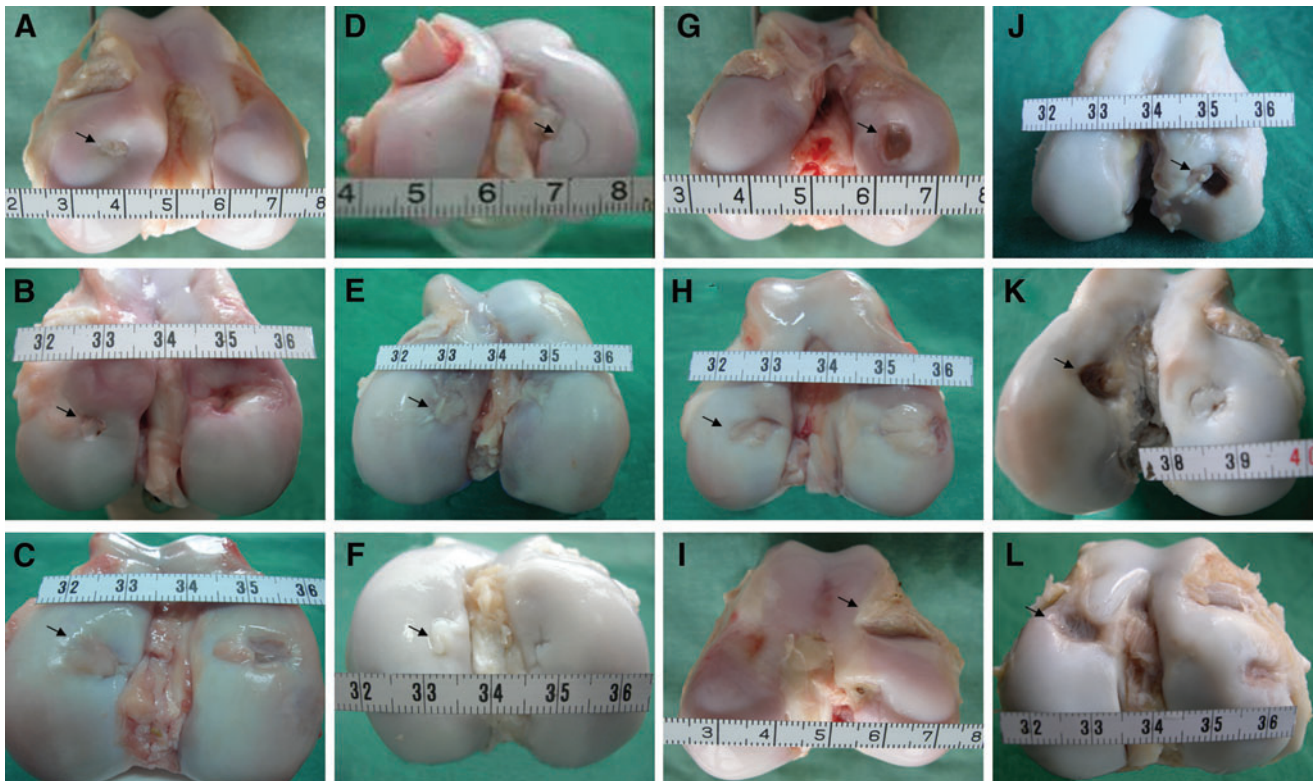


Supplementary Data



SUPPLEMENTARY FIG. S1. Gross view of repaired articular cartilage in either experimental or control group at 3 and 6 months after surgery, respectively. (A, B, and C) refers to the samples from animals of experimental group at 3 months postoperation, while (D, E, and F) to samples at 6 months after transplantation. And (G, H, and I) represent samples from control group at 3 months postsurgery, while (J, K, and L) to samples of control group at 6 months after surgery. (Arrows indicates the repaired tissue).