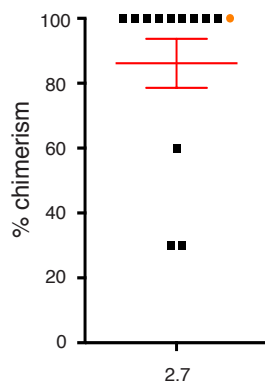
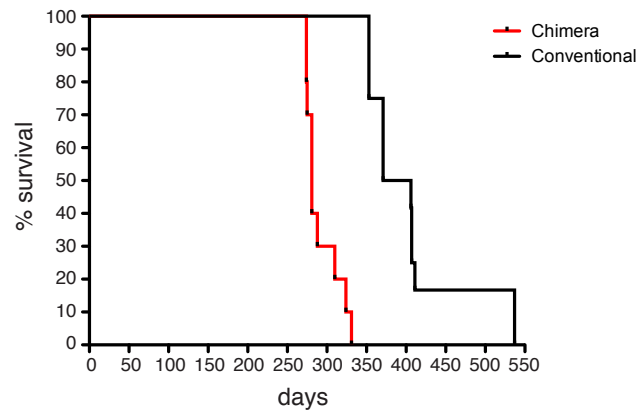


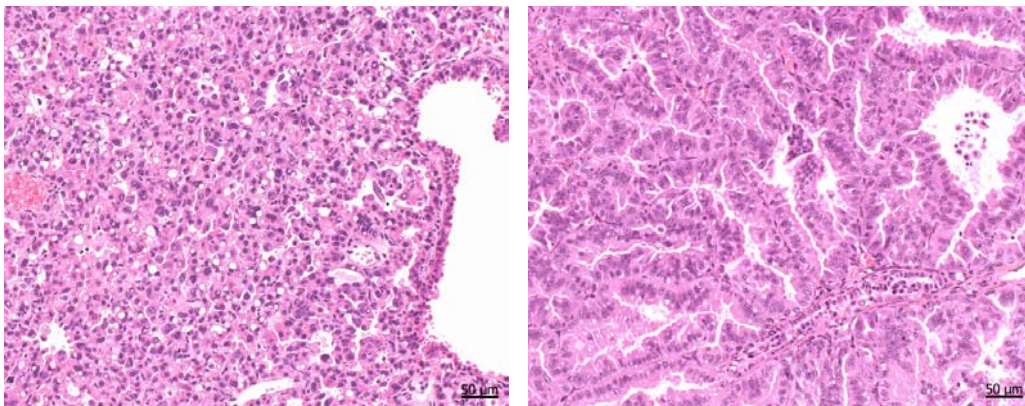
A ESC: *Kras^{LSL-G12D}*



B



C



Supporting Information Figure 2. Validation of *Kras^{LSL-G12D}* ESCs and chimeras.

A. *Kras^{LSL-G12D}* ESC clone 2.7 was injected into FVB/n morulae and scored for its chimeric contribution. The majority of chimeras, 10 of 13, were entirely black (100% chimerism). ■ male, ● female.

B. Survival curves of *Kras^{LSL-G12D}* mice intratracheally injected with Ad5-Cre. The chimeras developed NSCLC with shorter latency as compared to the conventional *Kras^{LSL-G12D}* mice. Black line – conventional mice, Red line – chimeras.

C. Representative HE-stained sections of an adenocarcinoma (left panel) and a papillary carcinoma (right panel) in the lungs of chimeric mice.