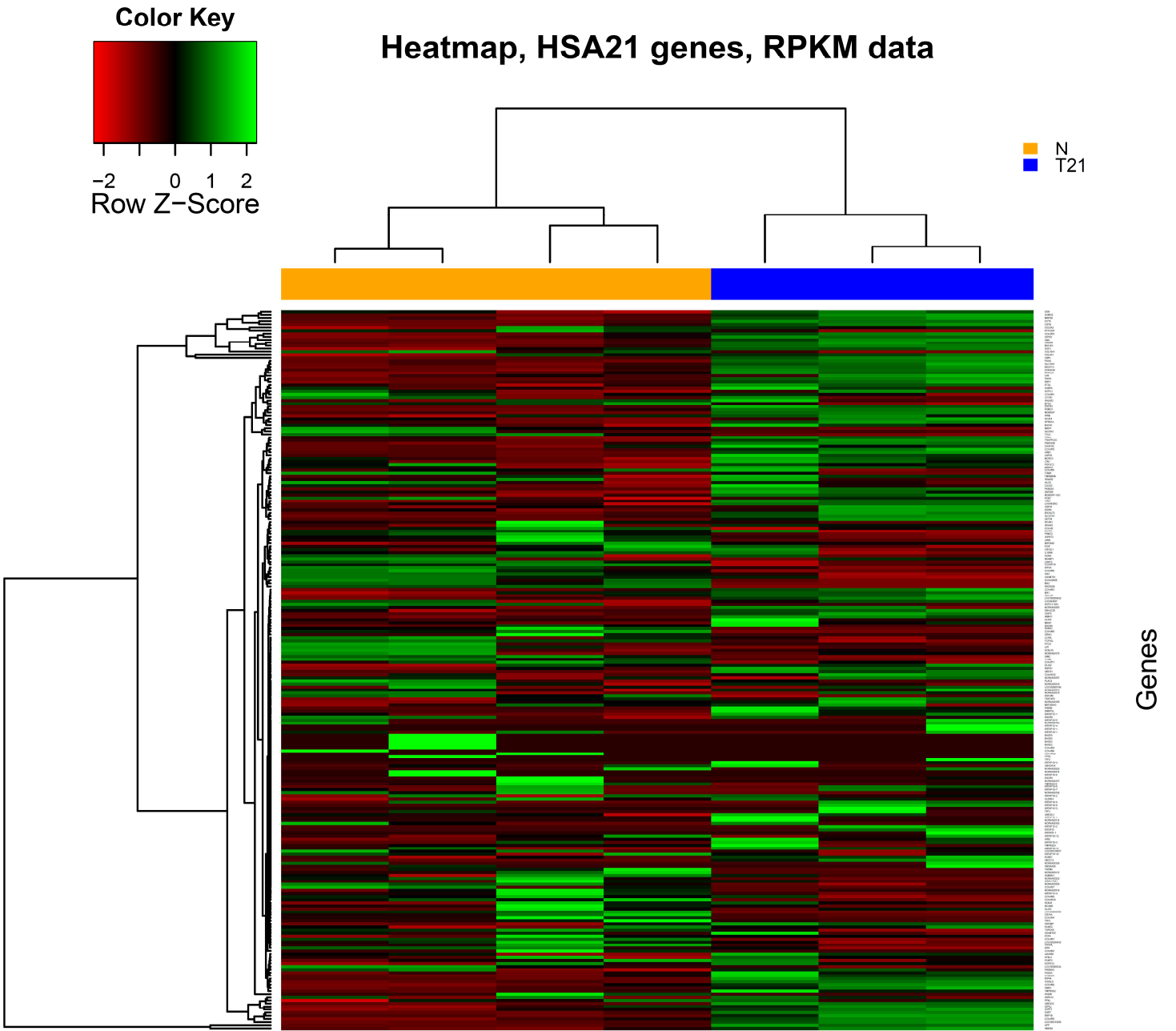
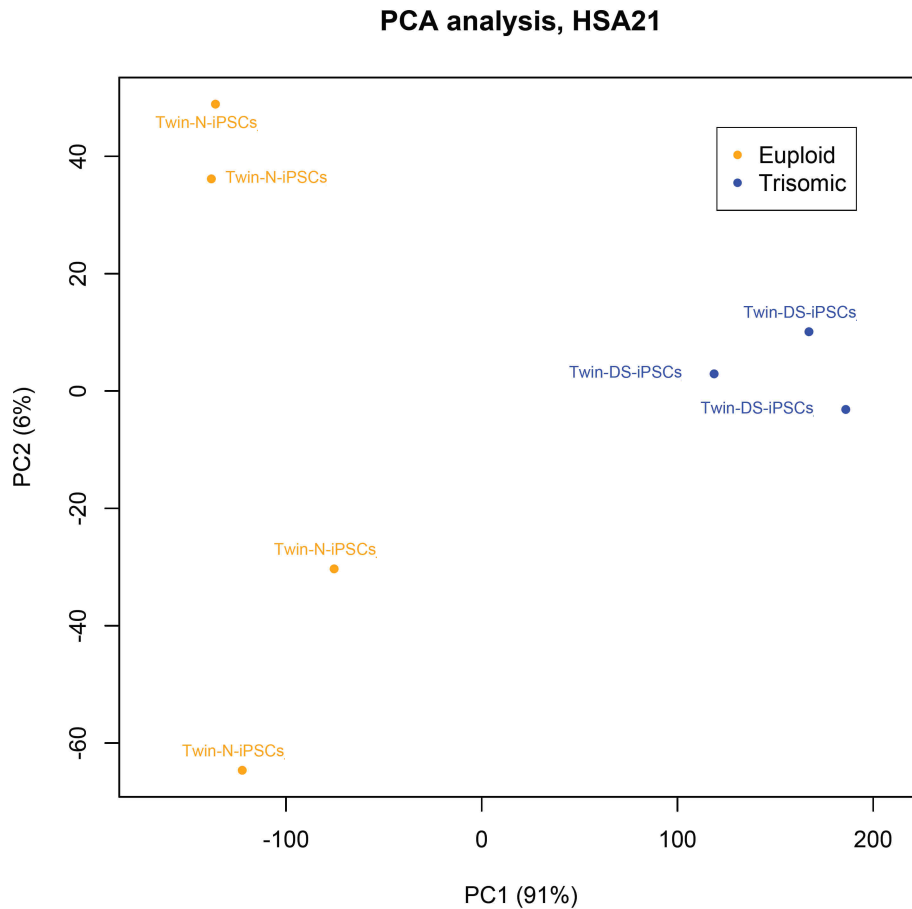


A



B

Supporting Information Fig 2. Heat map and principal component analysis (PCA) of the normalized expression values in Twin-N-iPSCs and Twin-DS-iPSCs when analyzing the HSA21 genes only.

(A) Samples (columns) and genes (rows) are sorted according to hierarchical clustering based on normalized and z-transformed gene expression values. A negative z-score (in red) indicates low expression (below the mean) whereas a positive z-score (in green) shows high expression (above the mean). (B) The two first principal components (PC1 and PC2) are plotted. The percentages represent the proportion of variance explained by each component. PC1 discriminates the trisomic (in blue) from the euploid (in orange) iPSC lines.