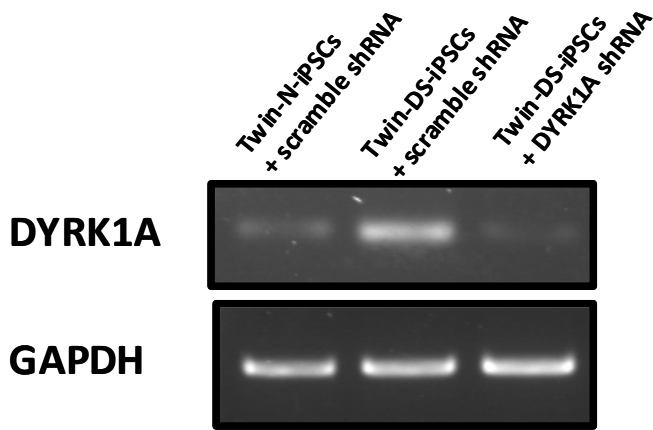
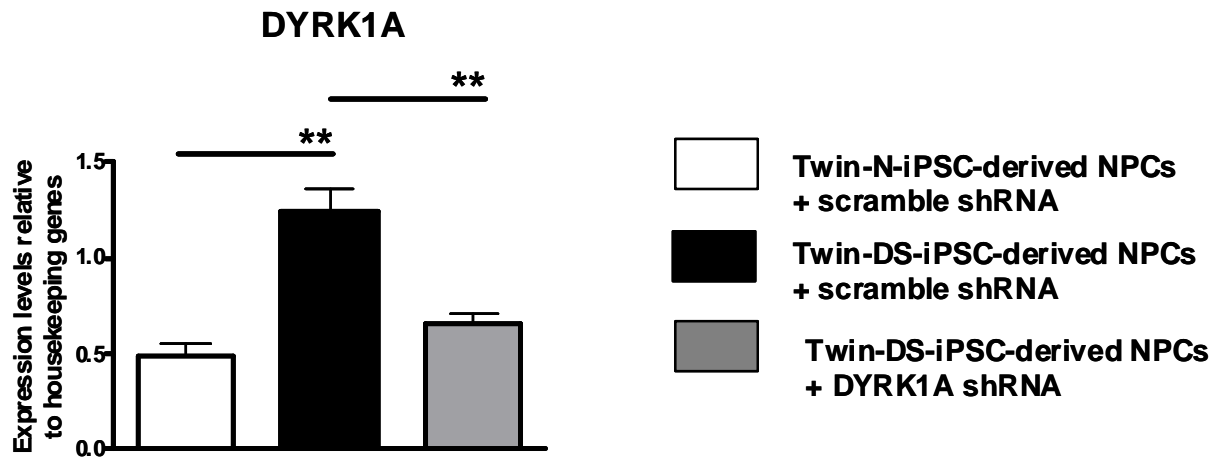


A**B**

Supporting Information Fig 8. Knockdown efficiencies of DYRK1A shRNA in NPCs derived from Twin-DS-iPSCs.

(A) Non quantitative RT-PCR showing knockdown efficiencies of DYRK1A shRNA in Twin-DS-iPSCs. (B) Quantitative RT-PCR showing knockdown efficiencies of DYRK1A shRNA in NPCs derived from Twin-DS-iPSCs. Data are represented as mean \pm SEM. ** $p < 0.01$ by one-way ANOVA followed with Tukey's post hoc test from $n = 4$.