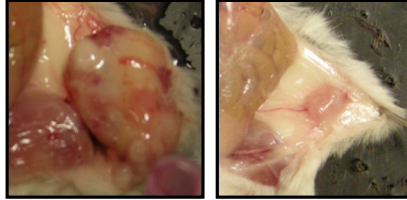


### Tumors in mammary fat pad

---

shCtrl-3

shA8-20



**Supplemental Fig S4. ADAM8 knockdown tumors fail to grow beyond a palpable size and are poorly vascularized in a mammary fat pad mouse model.**

MDA-MB-231-derived shCtrl-3 and shA8-20 cells were injected into the mammary fat pad of mice (n = 7/group). At the end of the experiment, tumors were photographed *in situ*. Representative photographs displaying the decreased size and poor vascularization of the shA8-20 vs shCtrl-3 tumors are shown.