

Supplementary Appendix

This appendix has been provided by the authors to give readers additional information about their work.

Supplement to: Gordon D, Taddei-Peters W, Mascette A, Antman M, Kaufmann PG, Lauer MS. Publication of trials funded by the National Heart, Lung, and Blood Institute. *N Engl J Med* 2013;369:1926-34. DOI: 10.1056/NEJMsa1300237

Supplementary Materials

Number of pages: 5

Table of contents:

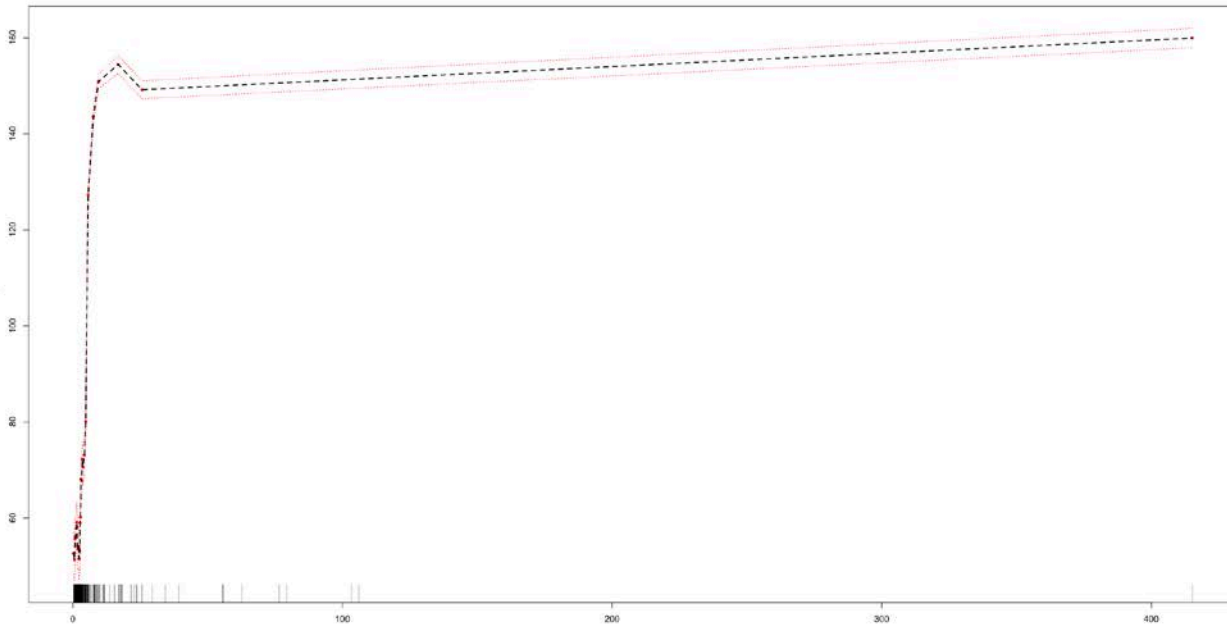
List of investigators:	Page 1
Supplementary Figures:	Pages 2-4
Supplementary Table:	Page 5

List of investigators:

David Gordon MD PhD*, Wendy Taddei-Peters PhD, Alice Mascette MD, Melissa Antman PhD, Peter G. Kaufmann PhD, and Michael S. Lauer MD**

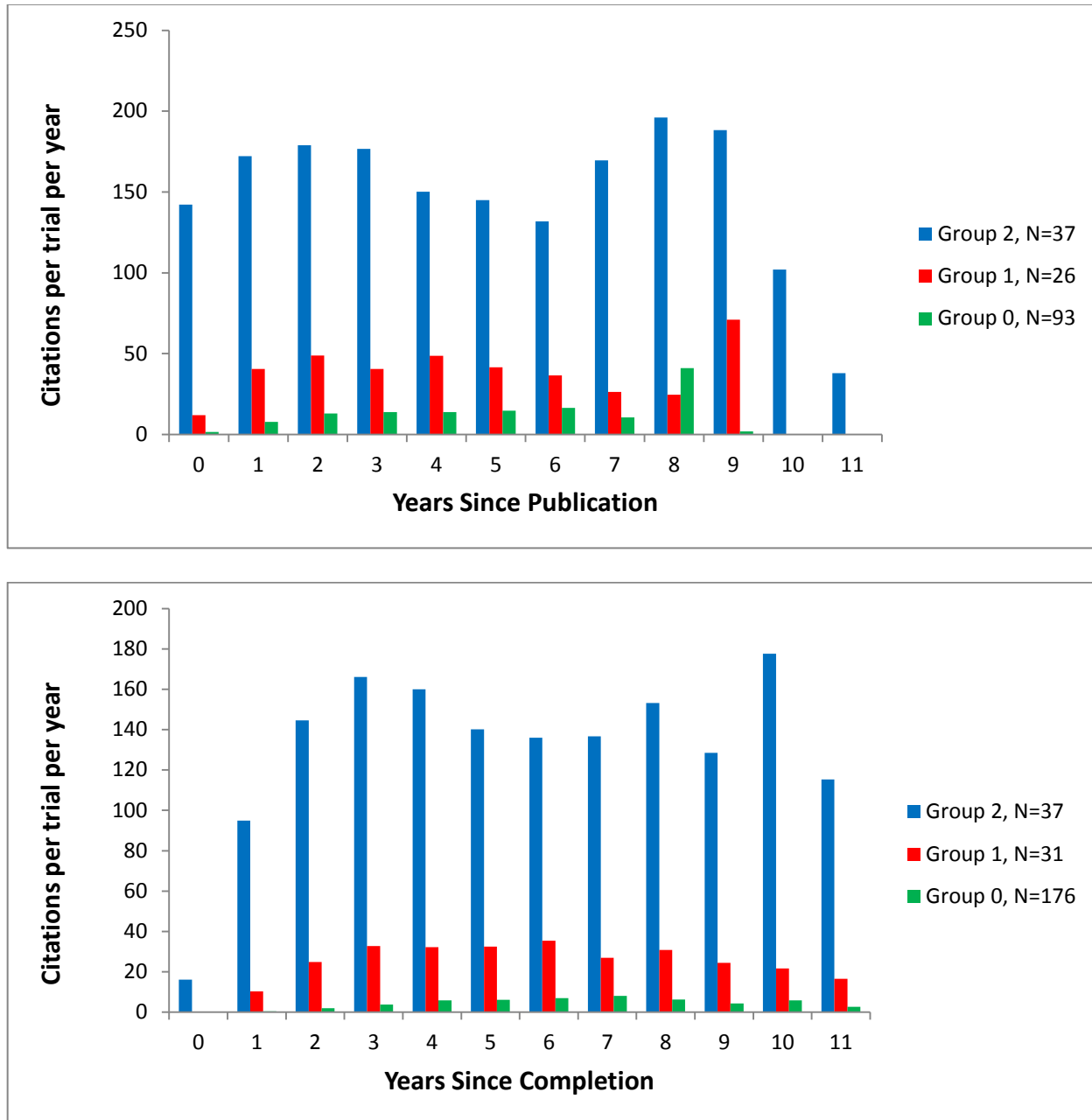
From the *Office of Special Projects, Division of Cardiovascular Sciences and the *Office of the Director, Division of Cardiovascular Sciences, both of the National Heart, Lung, and Blood Institute (NHLBI) in Bethesda, MD

Figure S1: Random survival forest plots showing ensemble estimators of likelihood of earlier publication as a function of budget. The right panel shows "partial" values as explained in <http://cran.r-project.org/web/packages/randomSurvivalForest/randomSurvivalForest.pdf>, page 15.



Budget (\$Million)

Figure S2: Citation rates according to trial characteristics. Panel A (upper) uses time of trial publication as time zero and considers only published trials, whereas Panel B (lower) uses time of trial completion and considers all trials, counting every year between completion and publication as a year with no citations. By definition, unpublished trials cannot be cited; we did not include citations to abstracts of meeting presentations. Note that the number of trials in the denominator decreases over time; the shape of the curve therefore does not reflect the trajectory of citations within a single “average” trial.



Group 2: Trials used clinical event as primary endpoint and cost \geq \$5 M.
 Group 1: Trials used clinical event as primary endpoint or cost \geq \$5 M, but not both.
 Group 0: Trials did not use clinical event as primary endpoint and cost $<$ \$5 M.

Figure S3: Kaplan-Meier estimators of time to publication for trials supported by grants which scored better or worse during peer review prior to funding. The 20 trials that were supported by contracts are not included since they are reviewed differently. We employed a composite 2-tiered peer review scoring metric, in which grants with percentile scores ≤ 12 or (if not assigned a percentile) with priority scores < 170 (or < 20 under the post-2009 system) were classified in the top tier.

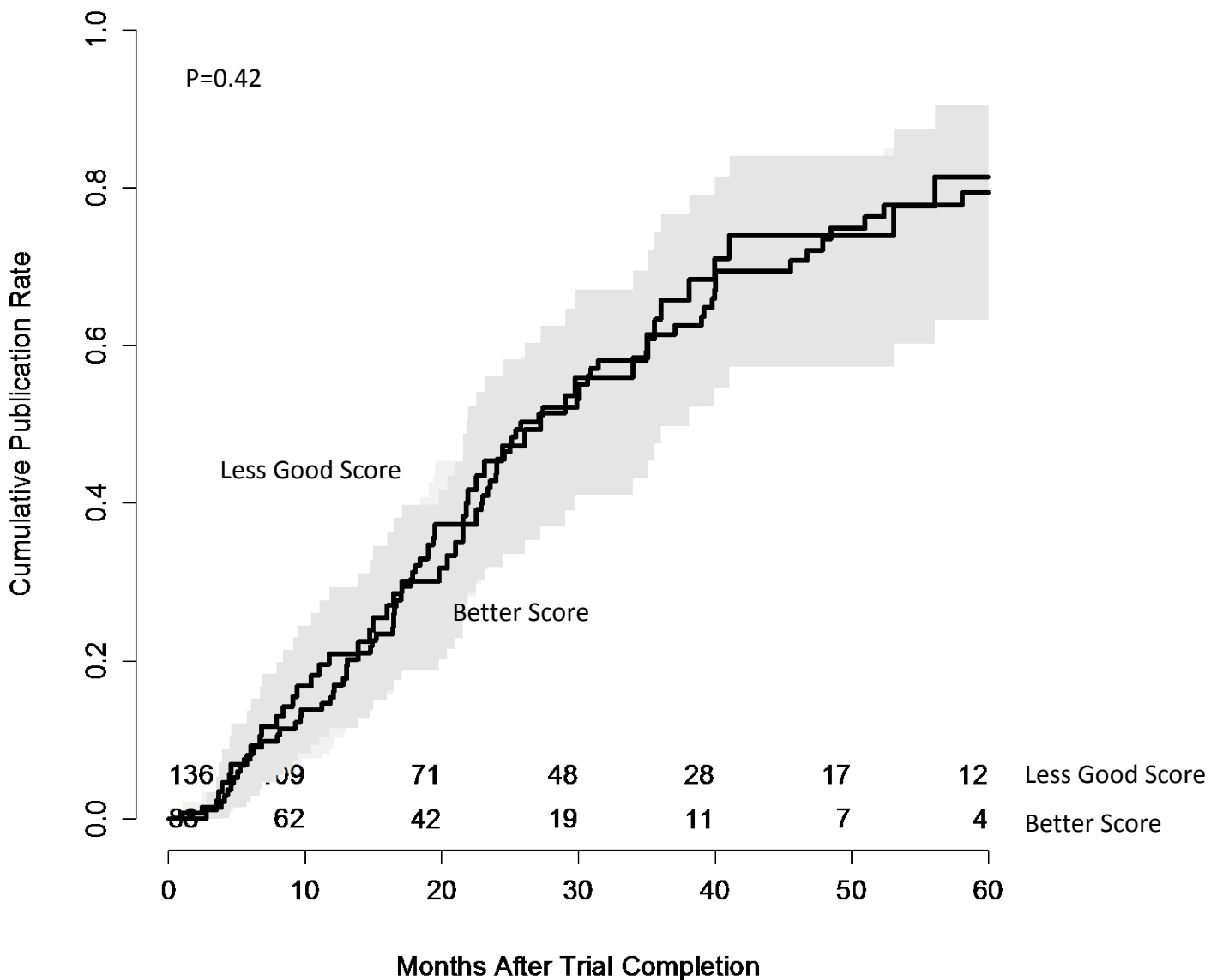


Table S1: Trials Averaging More than 40 Citations per Year from Publication Date through 2012

	Trial Acronym	Clinical Endpoint	Cost > \$5M	Positive Outcome	Date Completed	Date Published	Journal	Citations Per Year
1	WHI-EP	Yes	Yes	No	31-May-02	17-Jul-02	JAMA	812.5
2	ACCORD Diabetes	Yes	Yes	No	06-Feb-08	06-Jun-08*	N Engl J Med	469.8
3	ALLHAT-BP	Yes	Yes	No	31-Mar-02	18-Dec-02	JAMA	304.1
4	SCD-HeFT	Yes	Yes	Yes	31-Oct-03	20-Jan-05	N Engl J Med	290.1
5	WHI-E	Yes	Yes	No	29-Feb-04	14-Apr-04	JAMA	271.3
6	ACCORD BP	Yes	Yes	No	30-Jun-09	14-Mar-10*	N Engl J Med	207.9
7	AFFIRM	Yes	Yes	No	01-Oct-01	05-Dec-02	N Engl J Med	201.0
8	ACCORD Lipid	Yes	Yes	No	30-Jun-09	14-Mar-10*	N Engl J Med	179.0
9	REMATCH	Yes	Yes	Yes	27-Jul-01	15-Nov-01	N Engl J Med	130.2
10	WHS ASA	Yes	Yes	No	31-Mar-04	07-Mar-05*	N Engl J Med	120.4
11	AIM-HIGH	Yes	Yes	No	31-May-11	15-Nov-11*	N Engl J Med	112.8
12	BARI 2D	Yes	Yes	No	30-Nov-08	07-Jun-09*	N Engl J Med	108.3
13	POUNDS Lost**	No	Yes	No	01-Dec-07	26-Feb-09	N Engl J Med	96.6
14	WHI CD	Yes	Yes	No	31-Mar-05	16-Feb-06	N Engl J Med	95.8
15	ALLHAT-Dox	Yes	Yes	No	31-Jan-00	19-Apr-00	JAMA	78.9
16	ENRICHD**	Yes	Yes	No	30-Apr-01	01-Jun-03	JAMA	78.5
17	PEACE	Yes	Yes	No	01-Dec-03	07-Nov-04*	N Engl J Med	77.3
18	ACCORD Eye	No	Yes	Yes	01-Dec-09	29-Jun-10*	N Engl J Med	74.2
19	HF-ACTION**	Yes	Yes	No	15-Mar-08	08-Apr-09	JAMA	72.9
20	CADUCEUS	Yes	Yes	Yes	16-Jun-11	14-Feb-12*	Lancet	70.7
21	ALLHAT-LLT	Yes	Yes	No	31-Mar-02	18-Dec-02	JAMA	68.4
22	STICH-CABG	Yes	Yes	No	01-Nov-10	04-Apr-11*	N Engl J Med	68.3
23	TELE-HF	Yes	Yes	No	30-Jun-10	16-Nov-10	N Engl J Med	62.2
24	WHS E	Yes	Yes	No	31-Mar-04	06-Jul-05	JAMA	60.1
25	PAD	Yes	Yes	Yes	30-Sep-03	12-Aug-04	N Engl J Med	54.9
26	PREVENT	Yes	No	Yes	01-Dec-02	24-Feb-03*	N Engl J Med	54.2
27	WHI DM**	Yes	Yes	No	31-Mar-05	08-Feb-06	JAMA	53.7
28	PREMIER**	No	Yes	Yes	30-Nov-02	23-Apr-03	JAMA	53.5
29	ESCAPE	Yes	No	No	17-Nov-03	05-Oct-05	JAMA	52.5
30	OAT	Yes	Yes	No	31-Dec-05	14-Nov-06*	N Engl J Med	48.0
31	OmniHeart**	No	Yes	Yes	30-Jun-05	16-Nov-05	JAMA	43.0

* Online publication date

** Behavioral intervention

BLANK PAGE