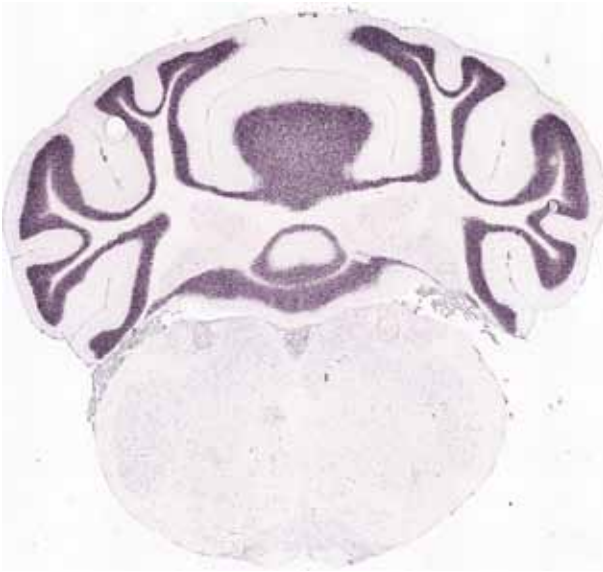
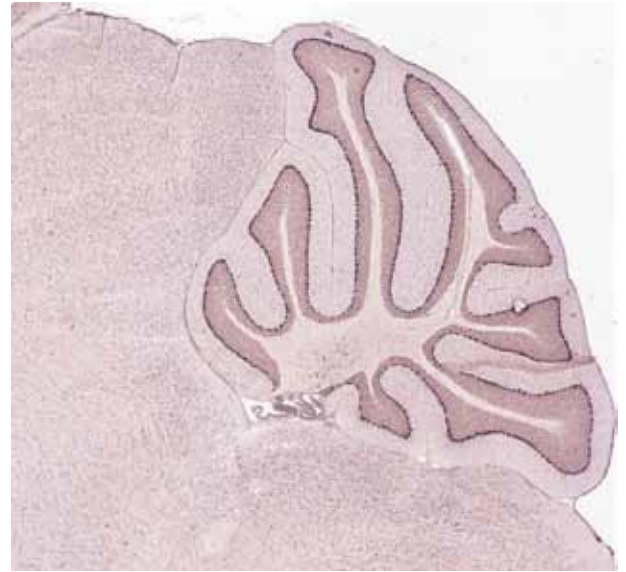


Supplementary Figure 1

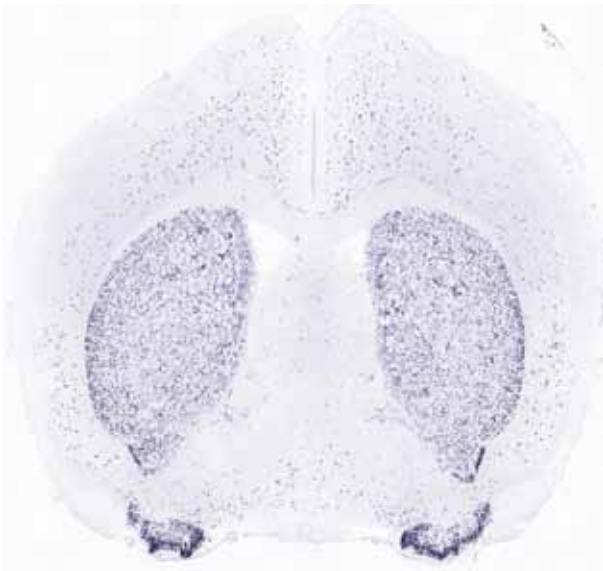
A



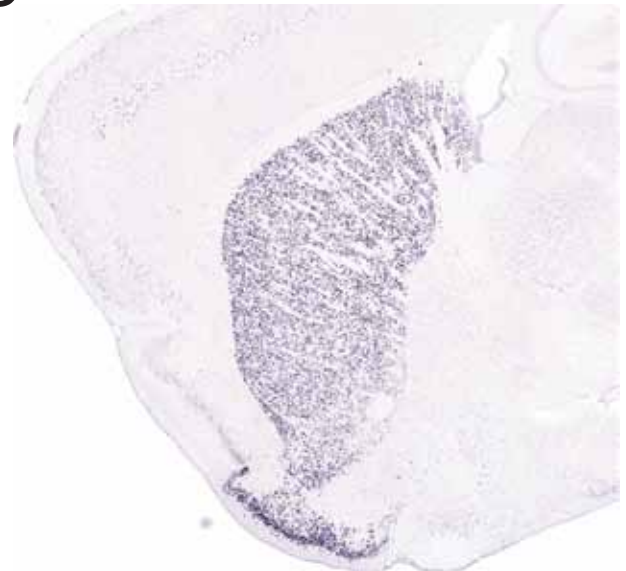
B



C



D



Supplementary Figure 1. Validation of microarray expression data in mouse brain.

In situ hybridization staining on 56-day-old male C57BL/6J mice: ALLEN mouse brain collection (<http://mouse.brain-map.org>) (25). Characteristic staining of the most highly enriched cerebellar genes from our data set: (A) coronal section *Gabra6* (<http://mouse.brain-map.org/experiment/show/75551467>); (B) sagittal section *Pcp2* (<http://mouse.brain-map.org/experiment/show/74357592>). Characteristic staining of the most highly enriched striatal genes in our data set: (C) coronal section *Tac1* (<http://mouse.brain-map.org/experiment/show/1038>); (D) sagittal section *Gpr88* (<http://mouse.brain-map.org/experiment/show/520>).