

Supplementary Information

Serum *Helicobacter pylori* NapA antibody as a potential biomarker for gastric cancer

Jingjing Liu¹, Huimin Liu², Tingting Zhang¹, Xiyun Ren¹, Christina Nadolny³, Xiaoqun Dong³, Lina Huang¹, Kexin Yuan¹, Wenjing Tian^{1*}, Yunhe Jia^{4*}

¹ Department of Epidemiology, College of Public Health, Harbin Medical University, Harbin, Heilongjiang Province, P. R. China.

² Department of neurology, The forth affiliated hospital, Harbin Medical University, Harbin 150001, Heilongjiang Province, P. R. China.

³ Department of Biomedical and Pharmaceutical Sciences, College of Pharmacy, The University of Rhode Island, Pharmacy Building, 7 Greenhouse Road, Kingston, RI 02881.

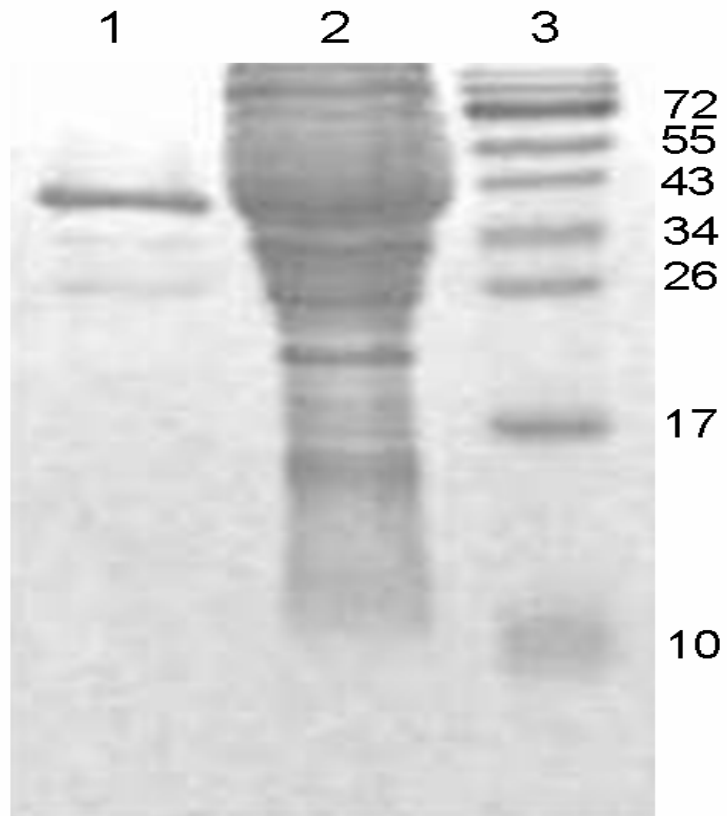
⁴ Department of Colorectal Cancer Surgery, The third affiliated hospital, Harbin Medical University, Harbin 150081, Heilongjiang Province, P. R. China.

*Correspondence to:

Wenjing Tian, M.D., Ph.D., Department of Epidemiology, College of Public Health, Harbin Medical University, 197 Xuefu Road, Harbin 150081, Heilongjiang Province, P. R. China. Tel: +86-451-87502685; Fax: +86-451-87502885; E-mail: twj8267@sina.com.

Yunhe Jia, M.D., Ph.D., Department of Colorectal Cancer Surgery, The third affiliated hospital, Harbin Medical University, 149 Xuefu Road, Harbin 150081, Heilongjiang Province, P. R. China. Tel: +86-451-86298096; Fax: +86-451-86663760; E-mail: 13945676987@126.com.

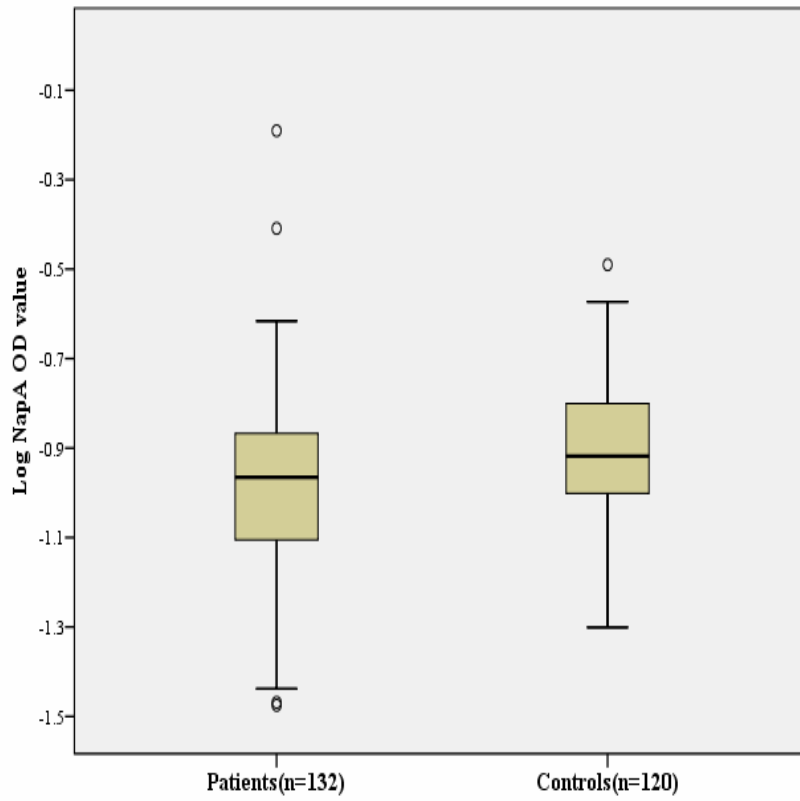
Supplementary Figure S1



SDS-PAGE analysis of purified NapA

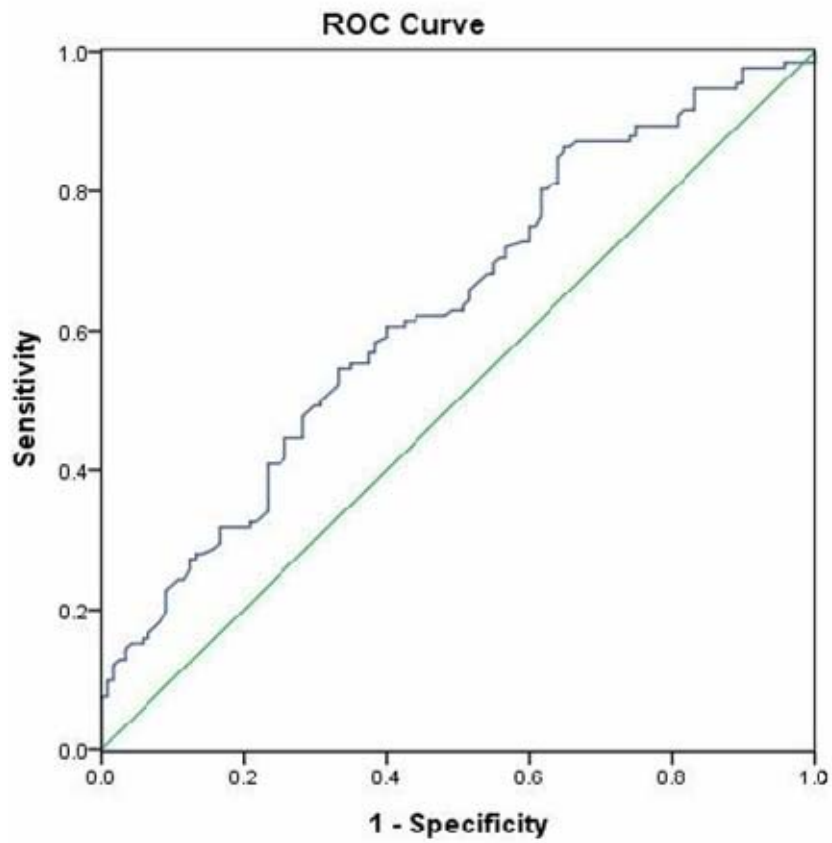
Note: 1. Purified protein NapA; 2. Unpurified protein NapA; 3. Marker.

Supplementary Figure S2



Box plot of serum NapA antibody levels for cases and controls in subjects infected by *H. pylori* (log-scale)

Supplementary Figure S3



Areas under ROC curves for protein NapA antibody titer (AUC = 0.63, $P < 0.05$) in *H. pylori* infected individuals