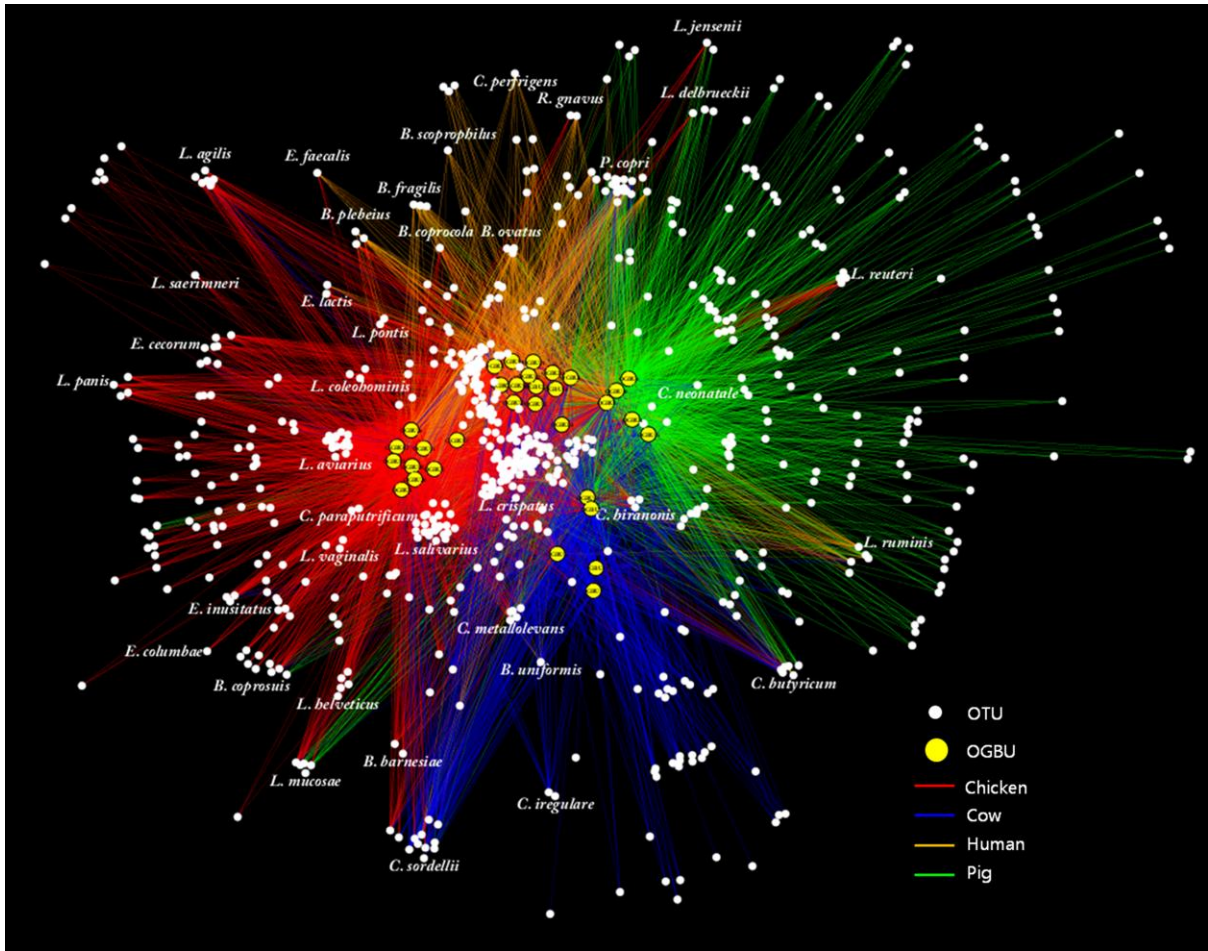
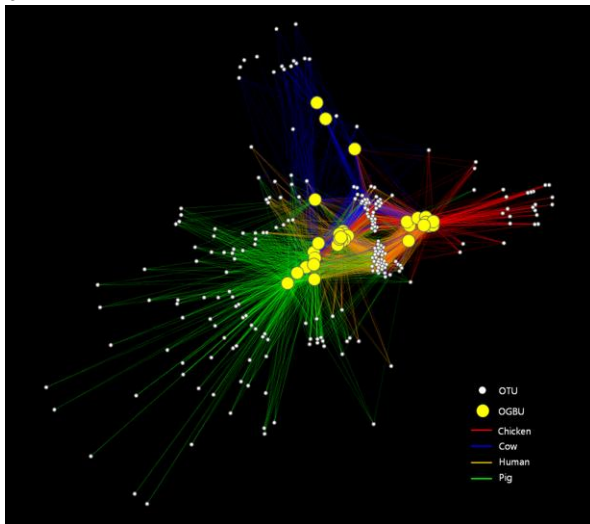


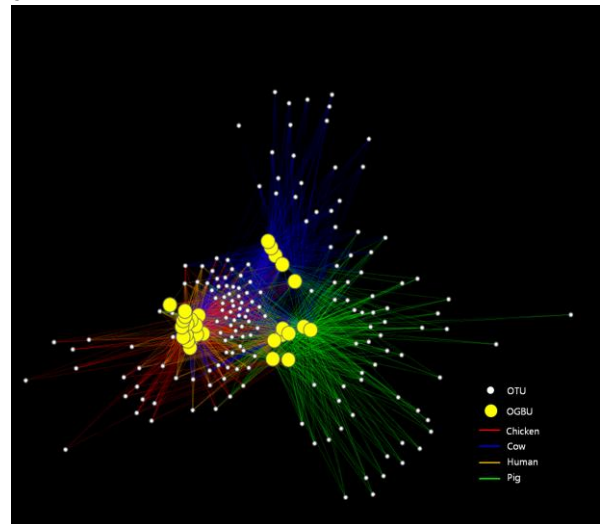
a

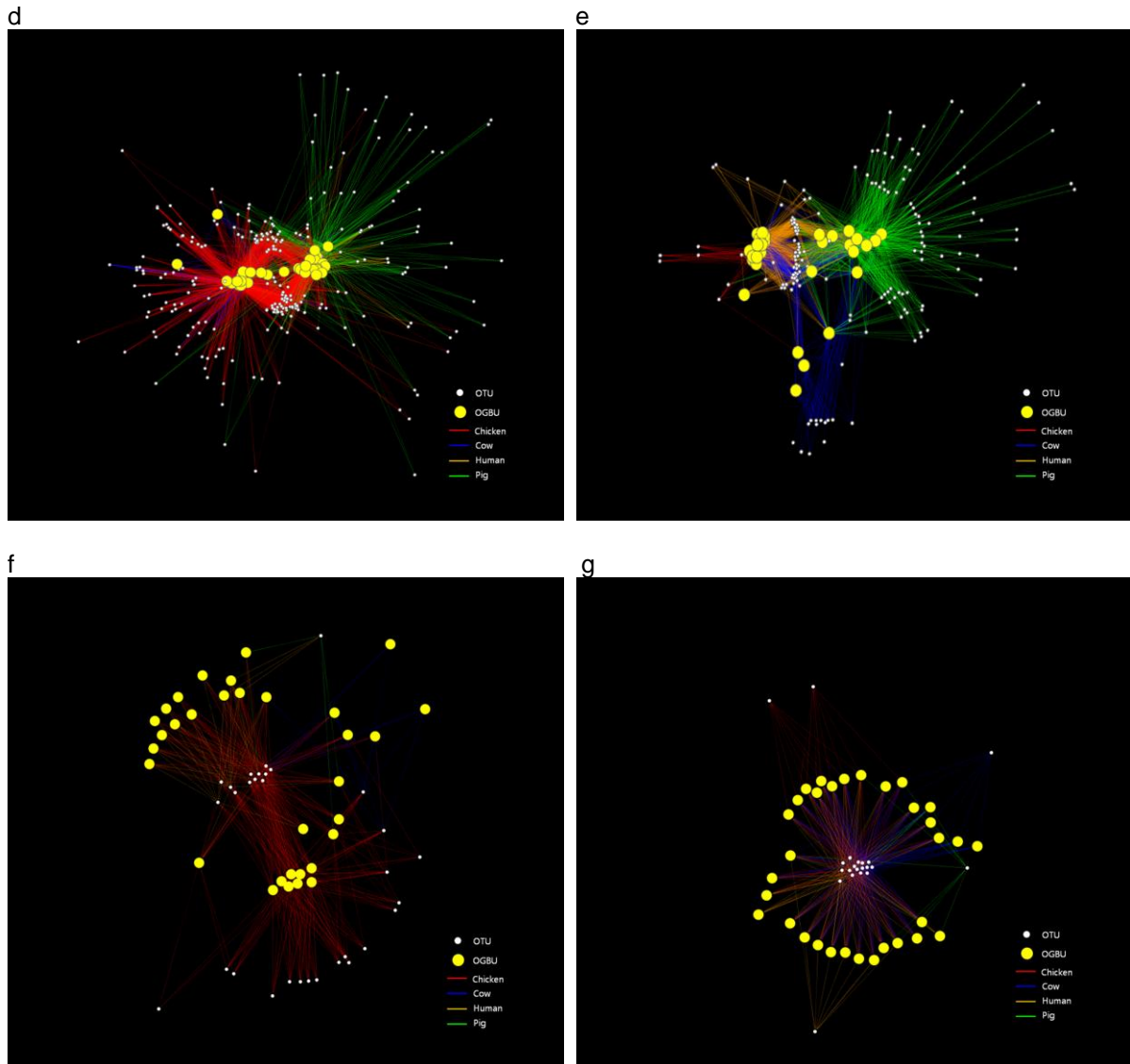


b



c





Supplementary Figure S4. Associations between OGBUs and each of specific microbial genus in 4 different hosts.

(a) all of gut microbiota (b) *Bacteroides* spp., (c) *Clostridium* spp., (d) *Lactobacillus* spp., (e) *Prevotella* spp., (f) *Enterococcus* spp., and (g) *Ruminococcus* spp. White circles, have not Italic naming, indicate genus level. Nodes, yellow and white circles, indicate OGBUs and OTUs, respectively. Edges, red, blue, orange, and green lines, mean connections of mapped taxon from 4 hosts (chicken, cow, human, and pig).