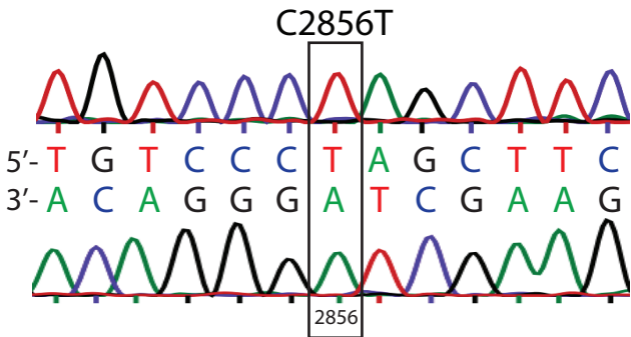


# Additional File 1



## **SUDHL2 cells do not have a wild-type EP300 sequence at codon 821.**

Genomic DNA corresponding to exon 14 of EP300 was sequenced in SUDHL2 cells. Sequencing was performed in the forward (top strand) and reverse (bottom strand) direction. Chromatograms and corresponding nucleotides are shown in the forward (top strand) and reverse (bottom strand) direction. The reported C2856T nonsense mutation at codon 821 [3] is highlighted.