

Genomic characterization of the mouse ribosomal DNA locus

Gabriel E. Zentner^{*1}, Stephanie A. Balow^{*}, and Peter C. Scacheri^{*§}

^{*}Department of Genetics and Genome Sciences, Case Western Reserve University, 2109 Adelbert Rd., Cleveland, OH 44106, USA

[§]Comprehensive Cancer Center, Case Western Reserve University, 11000 Euclid Ave., Cleveland, OH 44106, USA

¹Current address: Basic Sciences Division, Fred Hutchinson Cancer Research Center, 1100 Fairview Ave. N., Seattle, WA 98109, USA

Correspondence to Peter C. Scacheri

BRB 627

Case Western Reserve University

2109 Adelbert Rd.

Cleveland, OH 44106, USA

Email: pxs183@case.edu

Tel: 216-368-3458

Fax: 216-368-3432

DOI: 10.1534/g3.113.009290

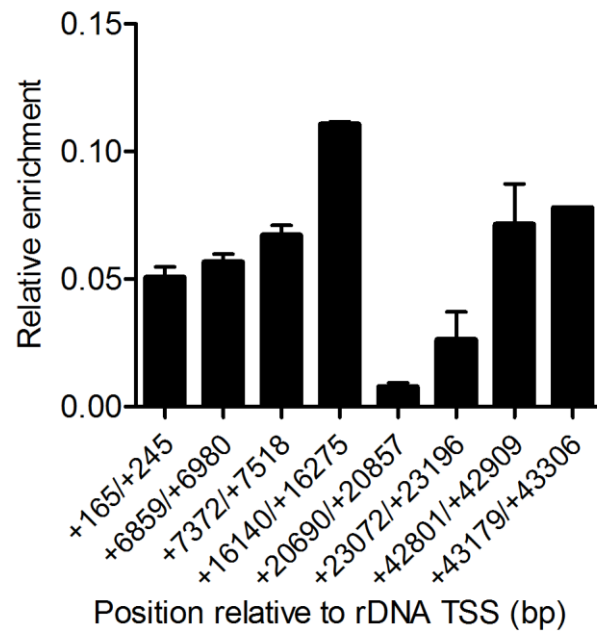


Figure S1 ChIP-PCR analysis of OCT4 binding to rDNA in mESCs.

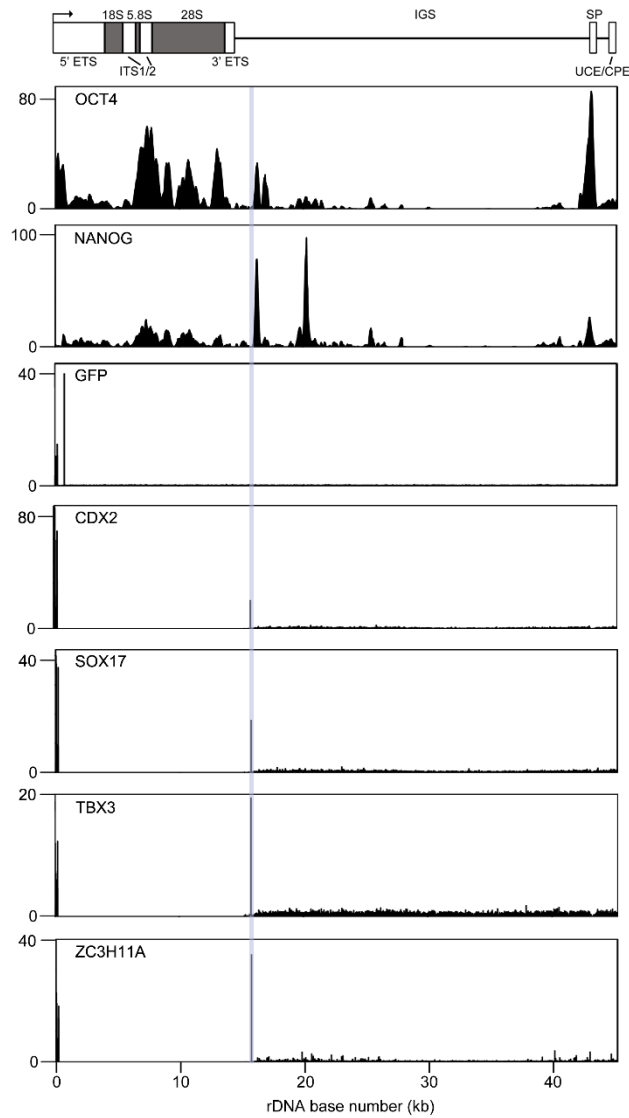


Figure S2 Negative controls for chromatin-binding protein association with rDNA in mESCs. Nuclear-targeted GFP as well as four transcription factors fail to bind rDNA in mESCs, indicating that the association of pluripotency factors with rDNA is specific. OCT4 and NANOG rDNA ChIP-seq profiles are shown for comparison.

Table S1 Mappability values of mouse rDNA as determined by BEADS.

Available for download as an Excel file at <http://www.g3journal.org/lookup/suppl/doi:10.1534/g3.113.009290/-/DC1>

Table S2 Primers used for ChIP-PCR assays

Amplicon relative to rDNA TSS (bp)	Forward primer (5' - 3')	Reverse primer (5' - 3')
+165/245	CTTGCGTGTGCTTGCTGT	GAAATCGGGAAAAACGTCTG
+6859/+6986	ACACCCGAAATACCGATACG	AGTGCGTTCGAAGTGTCGAT
+7372/+7518	CATCTGCTCTGGTCGAGGTT	GCAAGACCCAAACACACACA
+16140/+16275	CCCTTTTACACCTCCCCCTA	TTTCCAAAGGGCTACATTGC
+20690/+20857	GGAATCCGATGCACACTTTT	TGTGTGTGTGTGTGTGTGTA
+23072/+23196	AATACGCCGTGTGTGTGTGT	CAATGTGCCTTCATGATCAAA
+42801/+42909	AACTGTGCCTGTTCCCTCAC	GGCACCCAAAAACGAAAGTA
+43179/+43306	GACACAGGAGAGGGAAGTGC	CTCCCTGTACGACCTCCTTG

Table S3 Primers used for qRT-PCR assays

Target	Forward primer (5' - 3')	Reverse primer (5' - 3')
pre-rRNA	TGTCTGCCCGTATCAGTAACTGTC	CCCTGGCCCGAAGAGAACT
<i>GAPDH</i>	AAGGTCATCCCAGAGCTGAA	AGACAACCTGGTCCTCAGTGTAG