

Fig. S1. Expression of *Id1*, *Id3*, and *Nrarp* in the postnatal retina. (A-I) Wild-type retinas were probed for *Id1*, *Id3* and *Nrarp* expression by *in situ* hybridization at P1 (A,D,G), P3 (B,E,H) and P5 (C,F,I) stages. Cellular laminae are denoted: ONBL, outer neuroblastic layer; INBL, inner neuroblastic layer; GCL, ganglion cell layer.

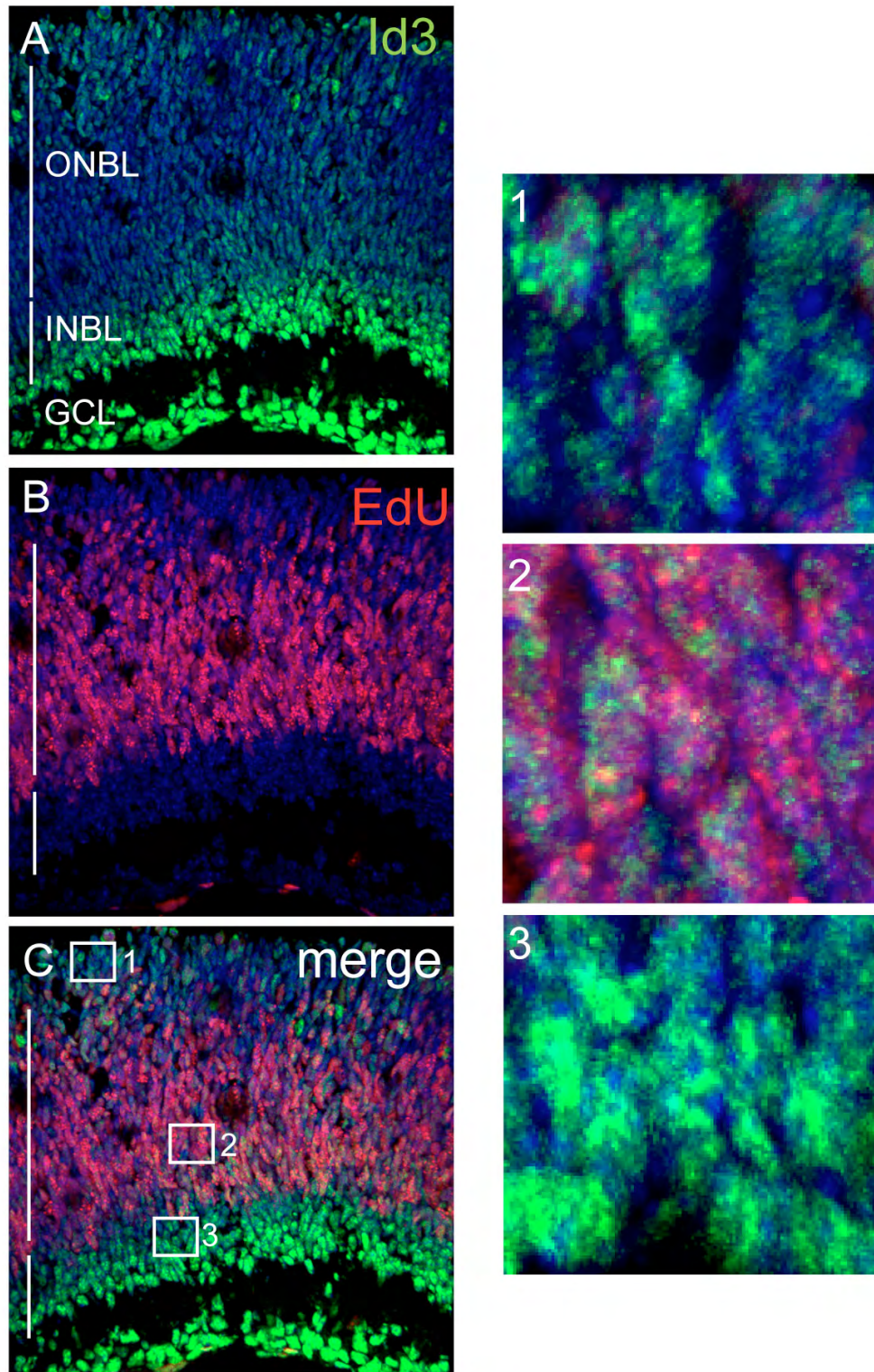


Fig. S2. Expression of Id3 in mitotic and postmitotic retinal cells. (A,B) P1 pups were injected three times with EdU over the course of 32 hours. The timing of injections was the same as described in Fig. 2, and retinas were harvested a few hours after the final injection. Retinas were stained with anti-Id3 (green) (A) and for EdU (magenta) (B). (C) Merged image. Insets show areas of the merged image at higher magnification. Cellular laminae are denoted: ONBL, outer neuroblastic layer; INBL, inner neuroblastic layer; GCL, ganglion cell layer. Id3⁺ cells in the ONBL are both EdU⁻ (1,3) and EdU⁺ (2).