

Supplementary Table 1. Successful classification of recurrent ovarian cancer patients

Age	Stage	Cell type	Recurrence	CA125 (U/ml)	Screening (P: patient)		
					90% ^a	85% ^a	80% ^a
50	Ia	SCC	Y		P	P	P
42	Ic	serous cystadenocarcinoma	Y		P	P	P
54	IIa, G2	adenocarcinoma, mixed endometrioid	Y	68.55	P	P	P
56	IIIa, G3	serous adenocarcinma	Y	81.3	P	P	P
67	IIIc	strumal carcinoid	Y		P	P	P
58	IIIc, G3	serous adenocarcinma	Y	33.51	P	P	P
41	IIIc, G3	mixed serous and transitional cell carcinoma	Y	27.69	P	P	P
58	IV	MMMT	Y	82.49	P	P	P

^a Sensitivities for the determination of the screening score thresholds in the training set. In the following column, the same score threshold was used for the screening of the test samples.

1

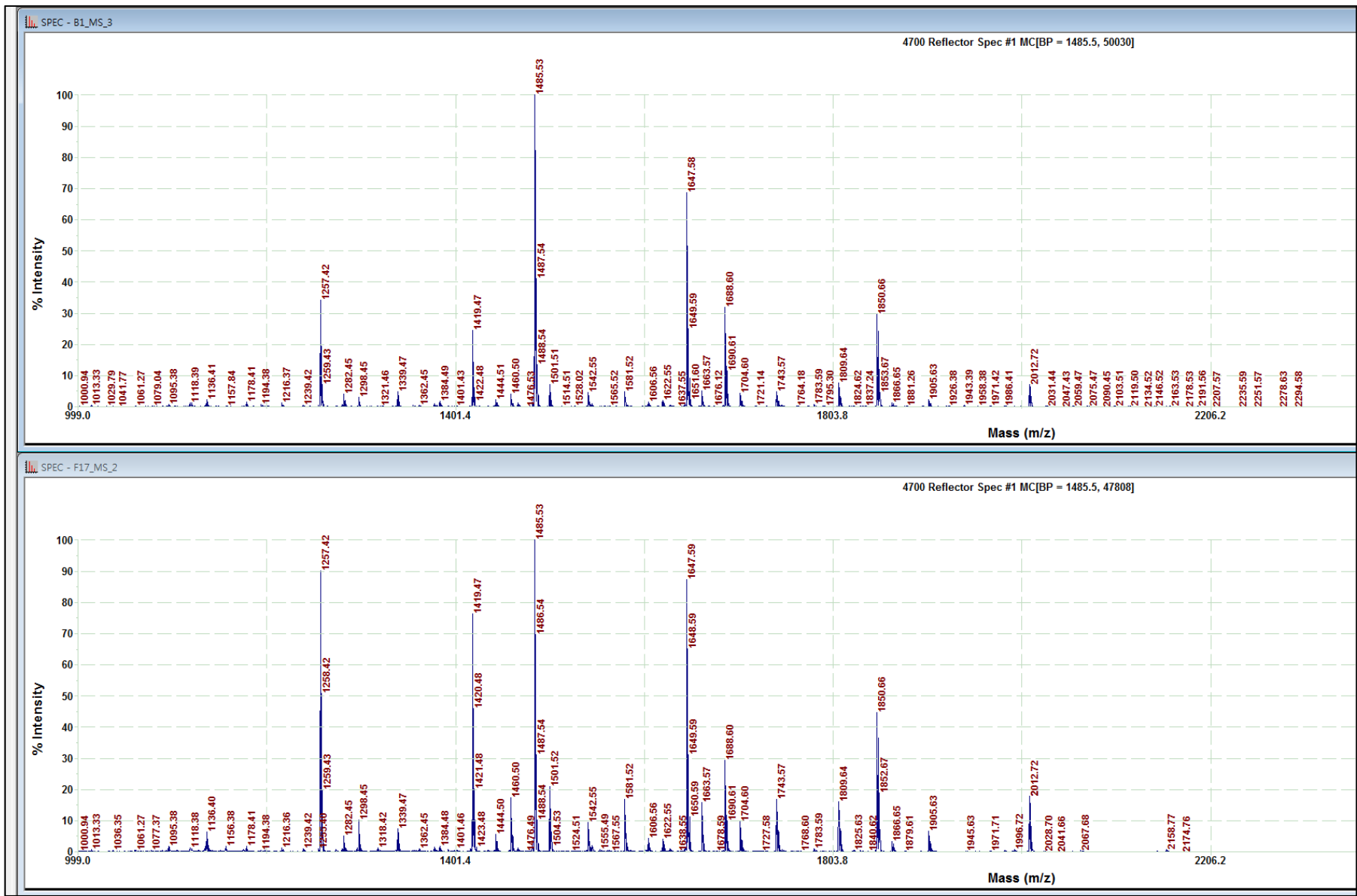
Supplementary Table 2. Classification of ovarian cancer sera depending on the cell types

Sensitivity standard for thresholds (Training set)		90%	85%	80%	CA-125
Sensitivity in the training set	Clear cell type	100%	100%	100%	80%
	Serous type	88%	81%	69%	73%
Sensitivity in the blind test set	Clear cell type	89%	89%	89%	67%
	Serous type	93%	93%	87%	92%

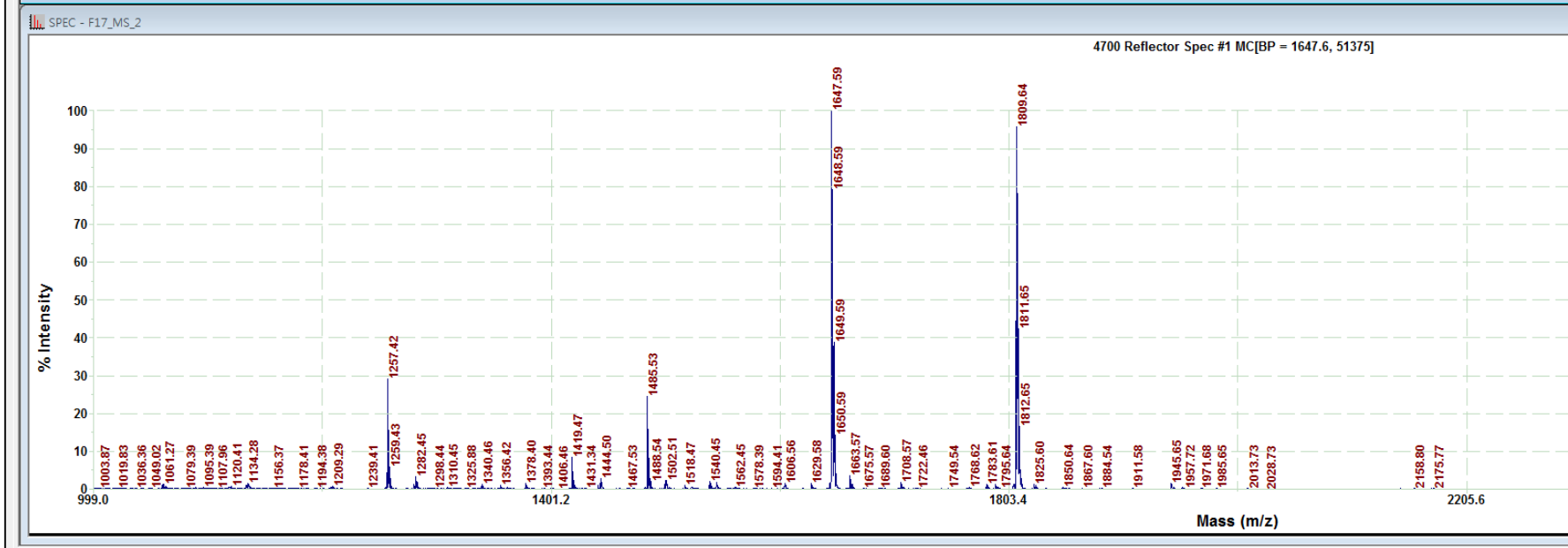
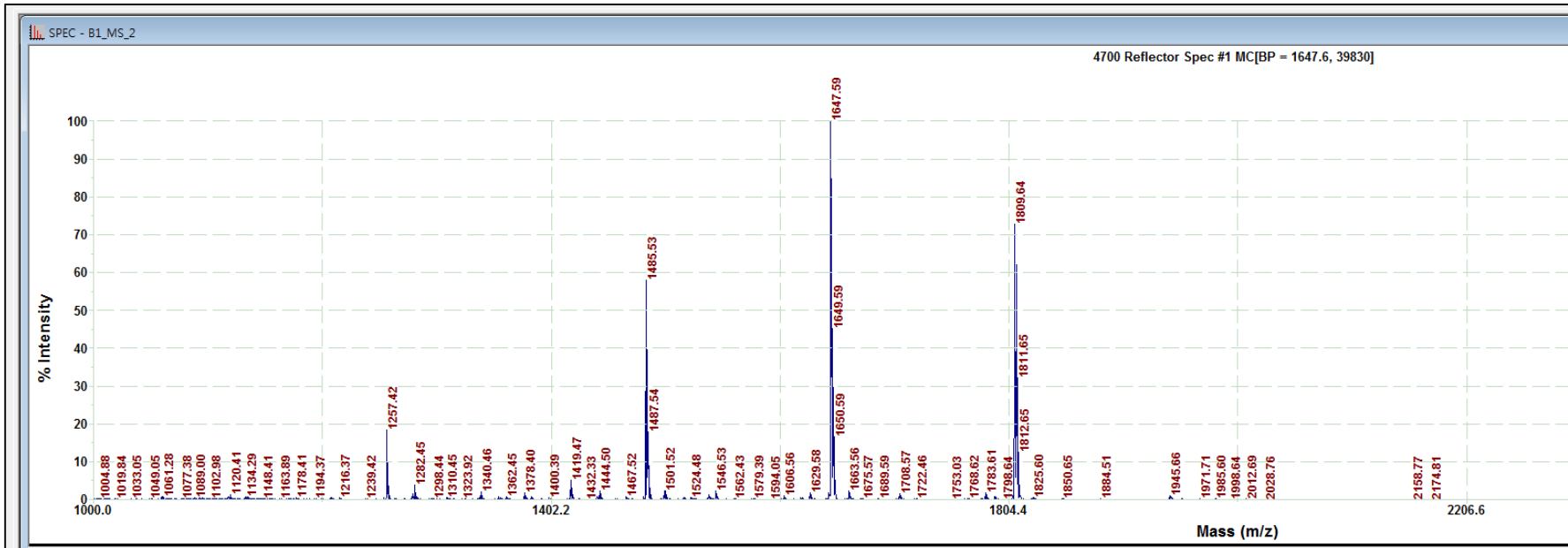
2

3

4



Supplementary Figure 1



Supplementary Figure 2