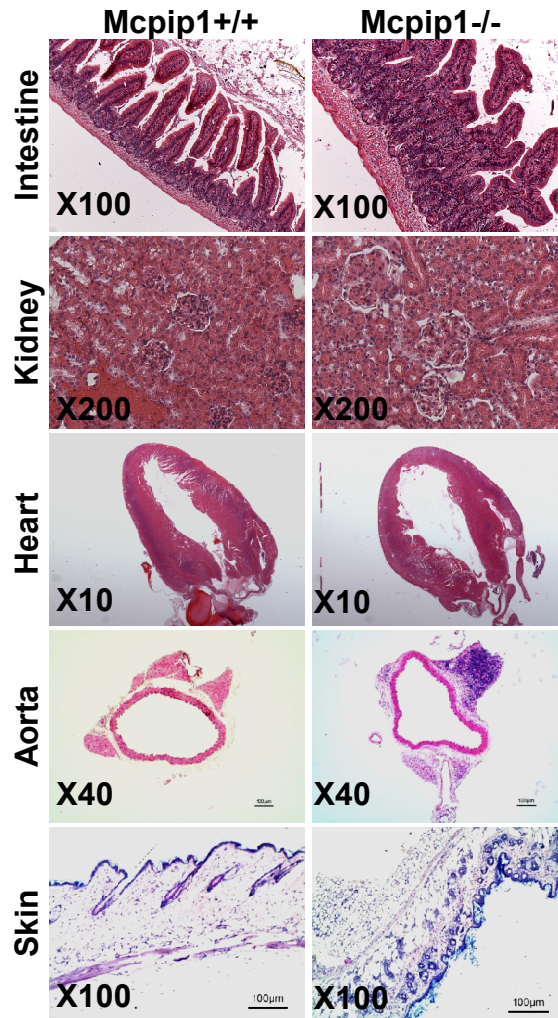


**Miao, et al. Supporting Information**

**Table 1: Primer sequence for QPCR**

Target molecules	Primer sequences (5' to 3')	
	Sense	Antisense
CD14	ACTTCTCAGATCCGAAGCCAG	CCGCCGTACAATTCCACAT
c-Kit	GGCCTCACGAGTTCTATTTACG	GGGGAGAGATTTCCCATCACAC
COX-2	GGG TTG CTG GGG GAA GAA ATG TG	GGT GGC TGT TTT GGT AGG CTG TG
EBF1	AAGCATCCAACGGAGTGGAAG	GATTTCCGCAGGTTAGAAGGC
FOXP3	ACCATTGGTTTACTCGCATGT	TCCACTCGCACAAAGCACTT
GATA-3	CCCCATTACCACCTATCCGC	CCTCGACTTACATCCGAACCC
IL-13	TGAGCAACATCACACAAGACC	GGCCTTGCGGTTACAGAGG
IL-17	GGCCCTCAGACTACCTCAAC	TCTCGACCCTGAAAGTGAAGG
IL-1 $\beta$	AAG GAG AAC CAA GCA ACG ACA AAA	TGG GGA ACT CTG CAG ACT CAA ACT
IL-4	ATCGGCATTTTGAACGAGGTC	GAGGACGTTTGGCACATCCA
IL-5	TCAGGGGCTAGACATACTGAAG	CCAAGGAACTCTTGCAGGTAAT
IL-6	TCG TGG AAA TGA GAA AAG AGT TG	AGT GCA TCA TCG TTG TTC ATA CA
iNOS	TGG GGA ACT CTG CAG ACT CAA ACT	GCA TTA GCA TGG AAG CAA AGA
MCP-1	TTA ACG CCC CAC TCA CCT GCT G	GCT TCT TTG GGA CAC CTG CTG C
MD2	GAATCTGAGAAGCAACAGTGGT	ACTCAACATGCACAAATCCATTG
NOD2	TGGACACAGTCTGGAACAAGG	CAGGACCCATACAGTTCAAAGG
Pax5	AAATCGCTGAGTACAAACGCC	GCCTGTAGACACTATGCTGTGAC
SCOS-1	TTG GAG GGA GCG GAT GGG TGT AG	TTG GAG GGA GCG GAT GGG TGT AG
T-BET	AGCAAGGACGGCGAATGTT	GTGGACATATAAGCGGTTCCC
TLR2	CTCTTCAGCAAACGCTGTTCT	GGCGTCTCCCTCTATTGTATTG
TLR4	GCCTTTCAGGGAATTAAGCTCC	GATCAACCGATGGACGTGTAAA
TNF $\alpha$	CTG AGG TCA ATC TGC CCA AGT AC	CTG AGG TCA ATC TGC CCA AGT AC
$\gamma$ -IFN	GGG TTG TTG ACC TCA AAC TTG GCA	CAG GCC ATC AGC AAC AAC AT

**Fig.S1, Miao et al.**



**Figure S1. Development of multi-organ inflammation in MCP1P1<sup>-/-</sup> mice.** H&E staining of formalin-fixed intestine, kidney, heart, aorta and skin sections from MCP1P1<sup>-/-</sup> mice and wild-type littermates at the age of 8 weeks. The images are representative of three independent experiments.