

## Supplemental figure legends

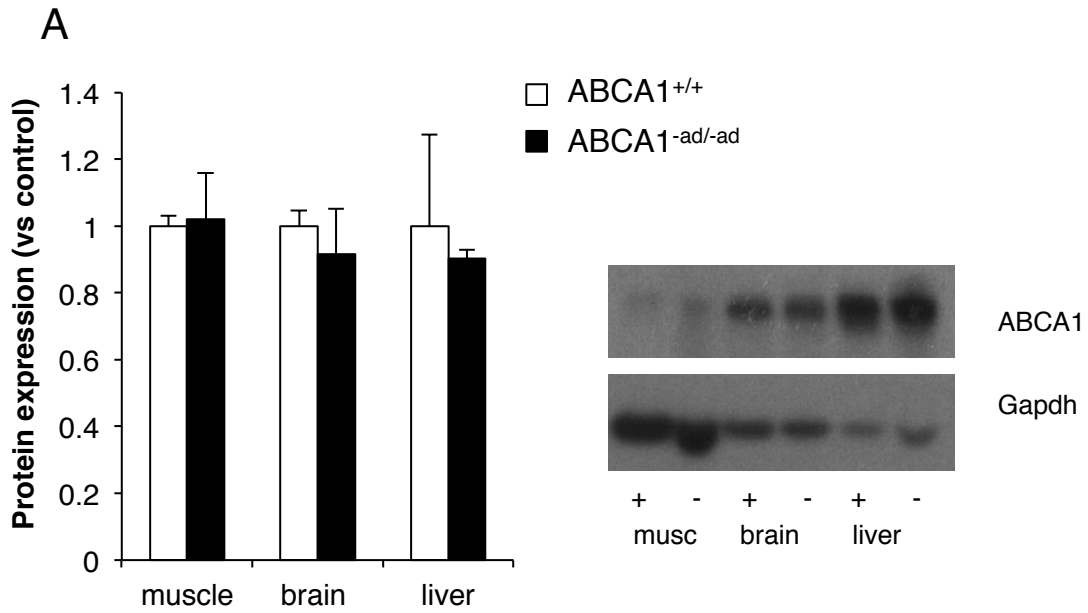
**Supplemental Figure 1. ABCA1 is specifically deleted in adipose tissue from ABCA1<sup>-ad/-ad</sup> mice.** Muscle, brain and liver were isolated from ABCA1<sup>+/+</sup> mice and ABCA1<sup>-ad/-ad</sup> mice and ABCA1 and protein levels were measured by western blotting. Values are means +/- SEM; N=4 \*\*P<0.01, \*\*\*P<0.001.

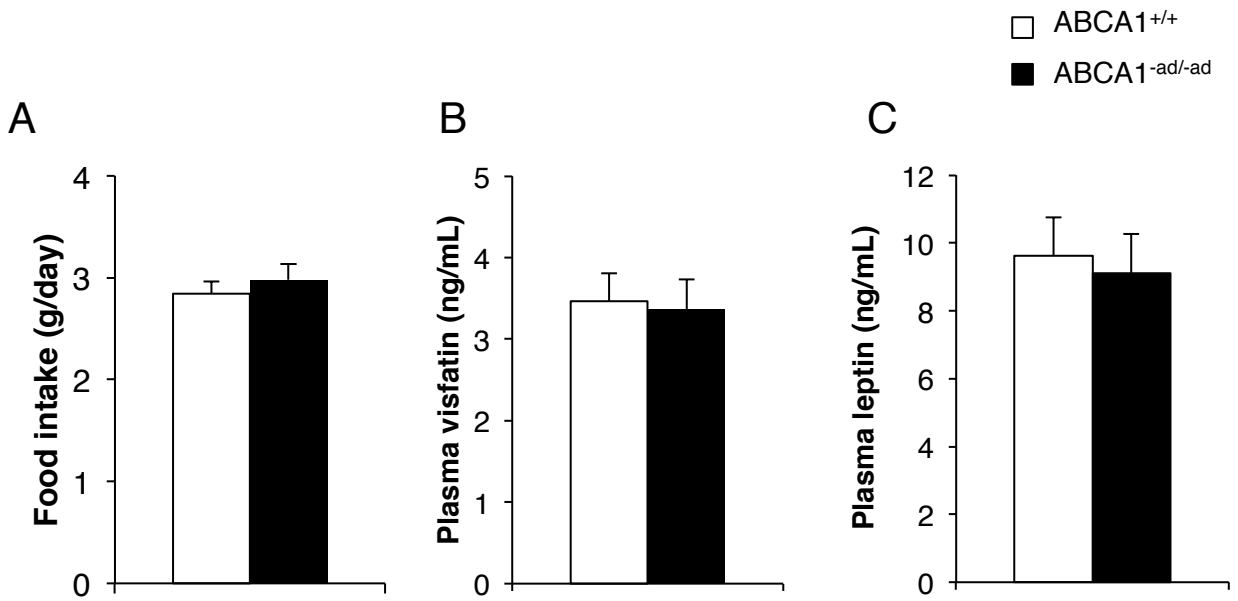
**Supplemental Figure 2. Adipocyte ABCA1 deficiency does not affect food intake visfatin and leptin levels**

Food intake was measured (A) and plasma leptin (B) and visfatin (C) levels were measured by ELISA. Values are means +/-, N=4-6 (A) N=14-16 (B,D).

**Supplemental Figure 3. Adipocyte ABCA1 deficiency increases hepatic lipid content**

Mice were fed a HFHC for 8 weeks. Livers were isolated from ABCA1<sup>+/+</sup> and ABCA1<sup>-ad/-ad</sup> mice and were weighed (A). Lipids were extracted from liver samples and TG and cholesterol levels were quantified (B). Values are means +/- SEM; N=6-7 \*P<0.05.





Supplemental Figure 2. Adipocyte ABCA1 deficiency does not affect food intake visfatin and leptin levels

