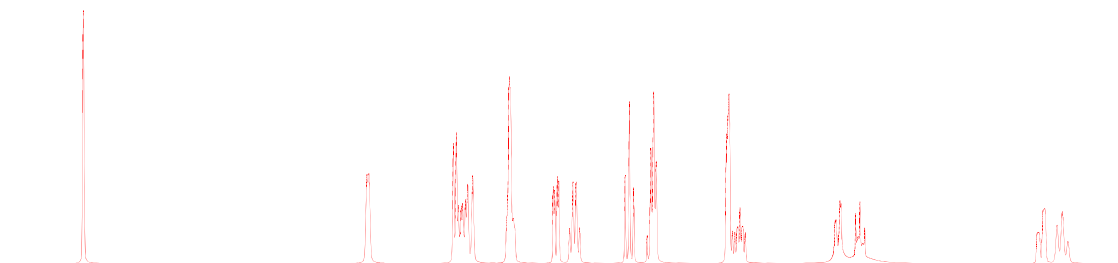
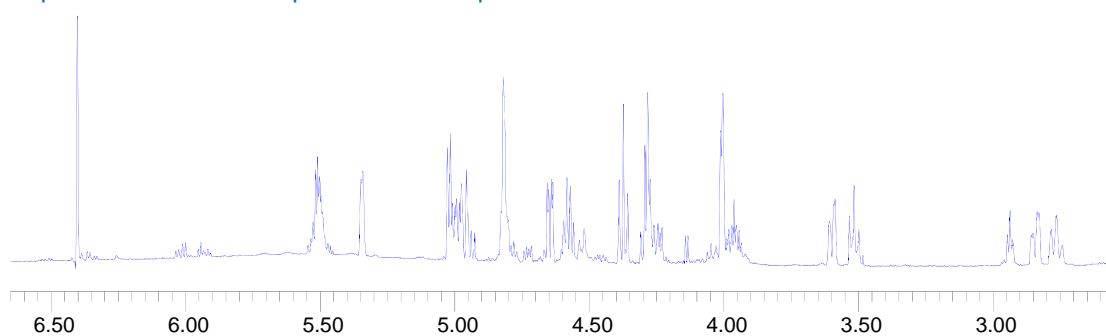


S3. ^1H NMR iterative full spin analysis of downfield regions of series A and B at 600 and 400 MHz, respectively, showing the detailed chemical shifts and coupling constants consistent with the relative configuration (unassigned signals belong to impurities)

Calculated ^1H NMR Spectrum of Sample A



Experimental ^1H NMR Spectrum of Sample A



Calculated ^1H NMR Spectrum of Sample B

Experimental ^1H NMR Spectrum of Sample B

