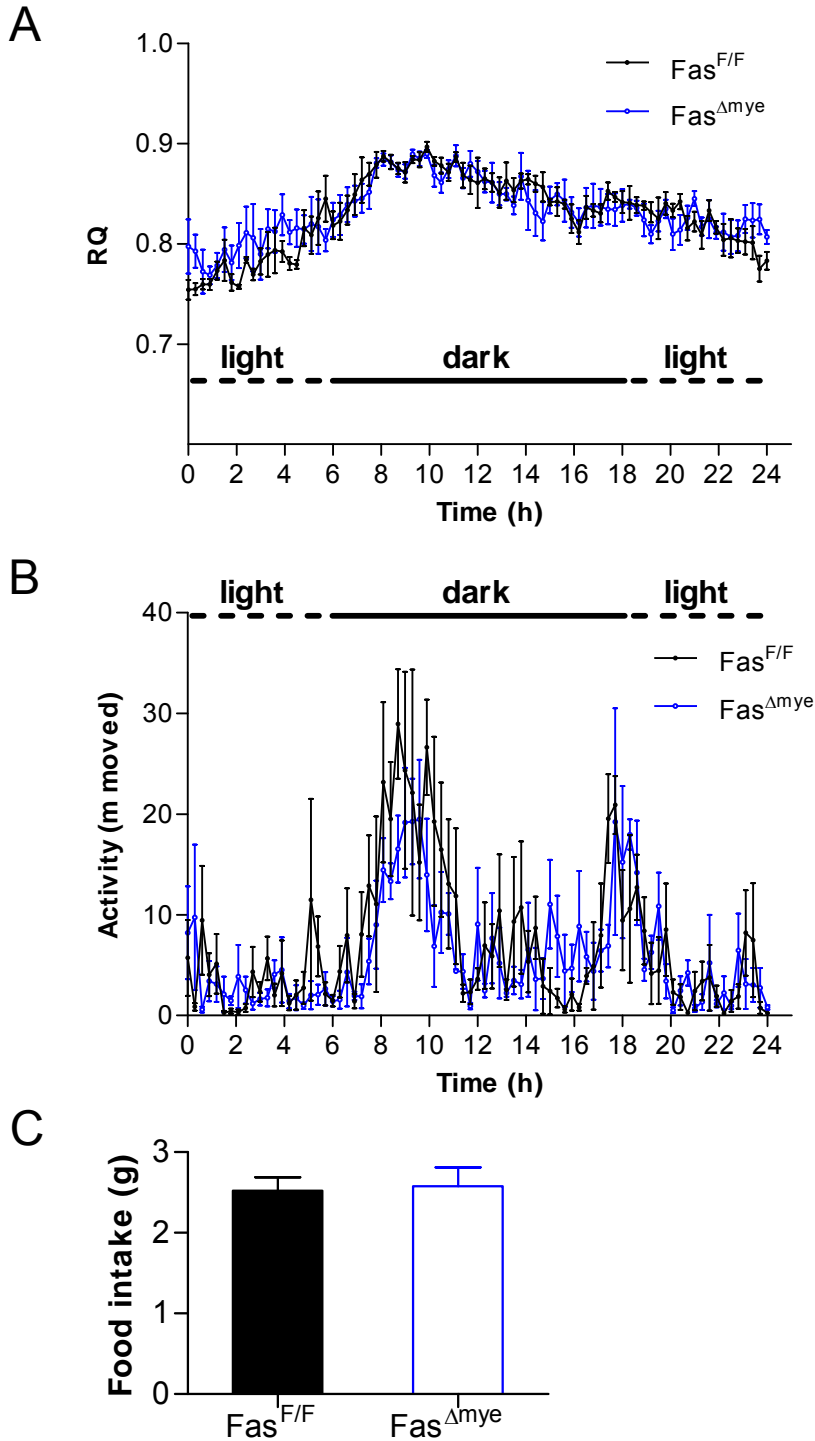


Supplemental Figure 9



Similar respiratory quotient, locomotor activity and food intake in $Fas^{F/F}$ and $Fas^{\Delta mye}$ mice

(A and B) Respiratory quotient (RQ) and activity was determined in metabolic cages in HFD-fed $Fas^{F/F}$ and $Fas^{\Delta mye}$ mice. $n=4$. (C) Food intake was measured in metabolic cages in $Fas^{F/F}$ (black bar) and $Fas^{\Delta mye}$ (blue bar) mice. $n=3-4$. Error bars represent SEM.