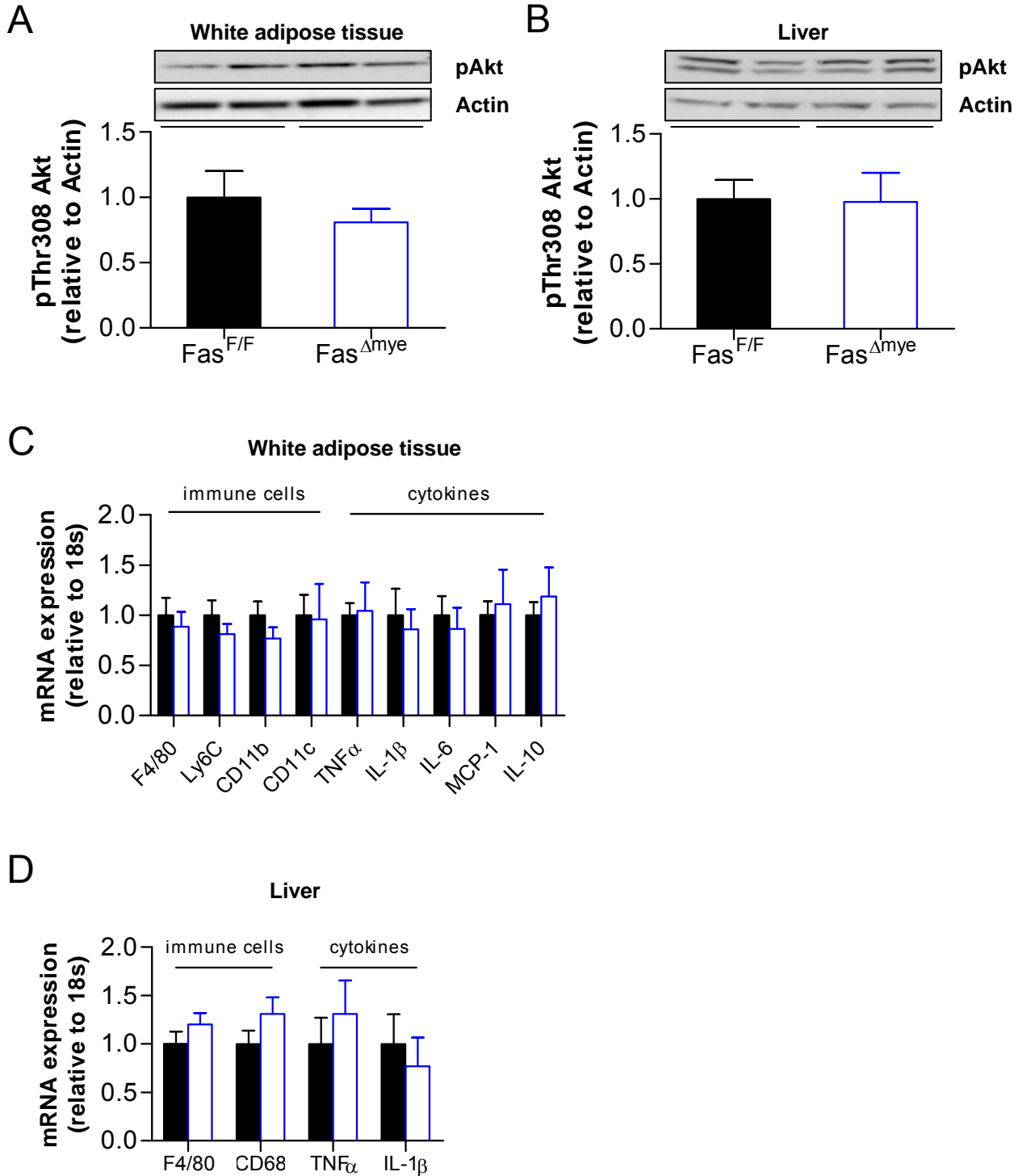


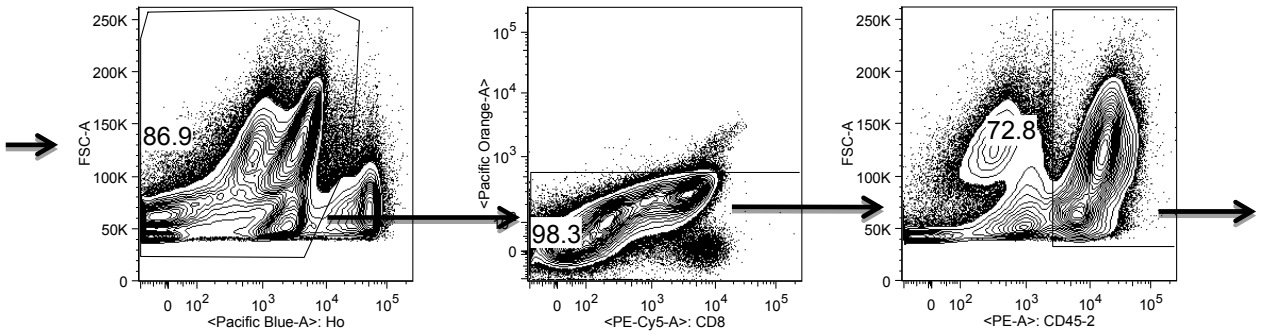
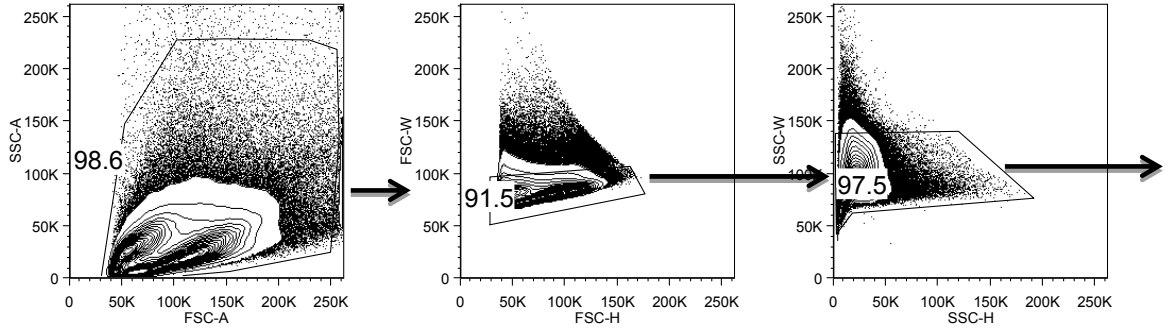
# Supplemental Figure 12



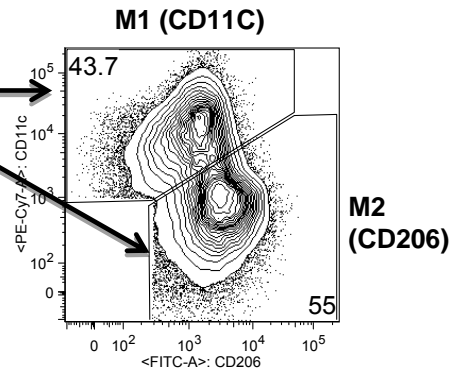
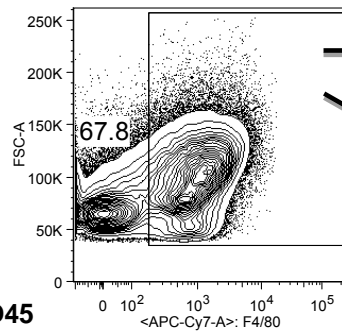
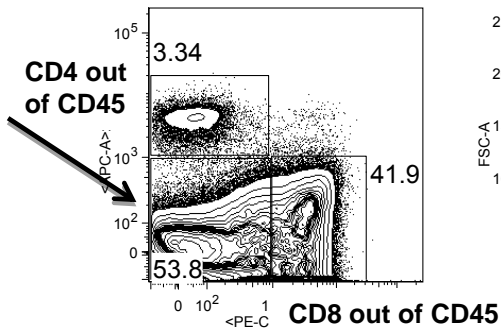
## Improved insulin sensitivity HOMA-IR after bariatric surgery

HOMA-IR was determined in obese patients before and six months after bariatric surgery (gastric sleeve resection) (n=14), \*\*p < 0.01 (Student's *t*-test). Error bars represent SEM.

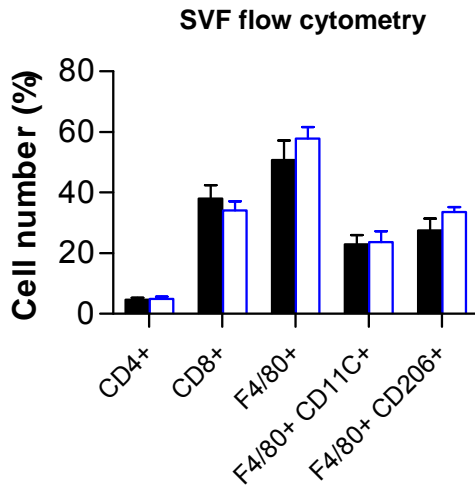
E



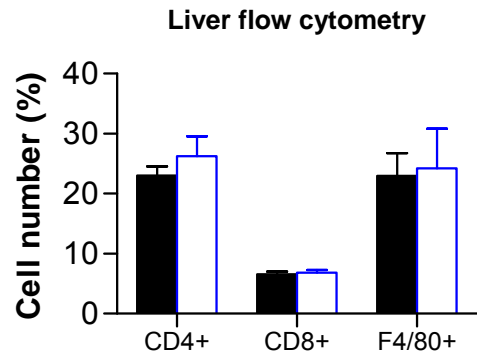
**F4/80 out of  
CD4negCD8neg  
under CD45 gate**



F



G



### Similar immune cell infiltration in white adipose tissue and livers of Fas<sup>F/F</sup> and Fas<sup>Δmye</sup> mice

(A and B) Representative Western blots of total WAT and liver lysates of HFD-fed Fas<sup>F/F</sup> and Fas<sup>Δmye</sup> mice. Results are the means  $\pm$  SEM of 4-5 mice. (C and D) mRNA expression of respective genes in WAT and livers of Fas<sup>F/F</sup> (black bars) and Fas<sup>Δmye</sup> (blue bars) mice. n=4-5. (E) Gating strategy of flow cytometric analysis. (F and G) Flow cytometric analysis of stromal vascular fraction (SVF) of white adipose tissue and liver cells of HFD-fed Fas<sup>F/F</sup> (black bars) and Fas<sup>Δmye</sup> (blue bars) mice. Cells were stained with respective antibodies and fluorescence was measured. n=5. All error bars represent SEM.